



PRODUCT CATALOG

CLINICAL

Table of Contents

Composites

IPS Empress Direct	7
IPS Empress Direct Flow "Art"	
IPS Empress Direct Color	
IPS Empress Direct Opaque	
Tetric EvoCeram	
Tetric EvoCeram Bulk Fill	
Tetric EvoFlow	
Tetric	
Tetric Ceram HB	
Tetric Color	
Monopaque	
Ceramic Repair	
Helio Progress	
Heliomolar	
Heliomolar HB	
Heliomolar Flow	

Compomers

Compoglass F	21
Compoglass Flow	

Adhesives / Etchants

AdheSE One F	22
AdheSE	
AdheSE DC Activator	
ExcITE F	
ExcITE F DSC	
Syntac	
Heliobond	
Total Etch	
Email Preparator blue	

Amalgams

Amalcap Plus	28
Vivacap	

IPS Empress CAD

IPS Empress	29
IPS Empress CAD for CEREC	
Basic Kit A-D	
IPS Empress CAD for CEREC	
Trial Kit A-D	
IPS Empress CAD HT	
IPS Empress CAD LT	
IPS Empress CAD Multi	
IPS Empress CAD Probe Blocks	
IPS Empress Universal Shade/Stains Kit	
IPS Empress Universal Shades	
IPS Empress Universal Stains	
IPS Empress Universal Glaze	
IPS Empress Universal Glaze Spray	
IPS Empress CAD HT/LT	
Material Shade Guide A-D/BL	
IPS Empress Packaging	

IPS e.max CAD

IPS e.max CAD	36
IPS e.max CAD for CEREC Basic Kit	
IPS e.max CAD for CEREC Starter Kit	
All-Ceramic Preparation Guide	
IPS e.max CAD for CEREC and inLab	

IPS e.max CAD Crystall./Shades	
IPS e.max CAD Crystall./Stains	
IPS e.max CAD Crystall./Glaze Paste	
IPS e.max CAD Crystall./Glaze Spray	
IPS e.max CAD Crystall./Glaze Liquid	
IPS e.max CAD Crystall./Add-On	
IPS e.max CAD Crystall./Add-On Liquid	
IPS e.max CAD Crystallization Tray	
IPS e.max Press/CAD Shade Guide	

Accessories CAD/CAM

IPS Ceramic Etching Gel	43
Tweezers	
IPS Contrast Spray Chairside	
IPS Object Fix Flow / Putty	
IPS Natural Die Material	
IPS Natural Die Material Shade Guide	

Temporary restoration

Telio CS C&B	45
Telio CS Inlay	
Telio CS Onlay	
Telio CS Link	
Telio CS Desensitizer	
Telio CAD for CEREC Starter Kit	
Telio CAD for CEREC and inLab Blocks	
Permit / Permit-N	

Cementation materials

Variolink II	51
Variolink II Double-Push Syringe	
Variolink II Try-in	
Variolink Ultra	
Variolink Veneer	
Dual Cement	
Monobond Plus	
Liquid Strip	
Ivoclean	
Multilink Automix	
Multilink Implant	
SpeedCEM	
Vivaglass CEM PL	
Heliosit Orthodontic	

Liners

Vivaglass Liner	61
-----------------	-----------

Endodontics/Core Build-Up

ApexCal	62
Apexit Plus	
FRC Postec Plus	
MultiCore	

Impression Materials

Virtual	65
Virtual 380	
Virtual CADbite Registration	
Vival NF	

Equipment

bluephase 20i	68
bluephase	
bluephase C8	
LEDition	
bluephase meter	
Silamat S6	
Programat CS	
Vacuum Pump VP4	
Vacuum Pump VP3 easy	
Programat Firing Tray Kit	
Metal Pins for Firing Tray	
IPS e.max CAD Crystallization Tray	
Automatic Temperature	
Checking Set 2 „ATK2“	
Firing Tongs	
Cultura Incubator	

Professional Care Products

CRT bacteria	77
CRT buffer	
Plaque Test	
VivaSens	
Cervitec Plus	
Cervitec Gel	
Cervitec Liquid	
Fluor Protector	
Fluor Protector Gel	
Helioseal / Helioseal F / Helioseal Clear	
Proxyt	

Tooth Whitening Tooth Jewellery

VivaStyle	87
VivaStyle 30%	
VivaStyle 10% / 16%	
VivaStyle Paint On Plus	
Skyce	

Clinical Accessories

OptraGate ExtraSoft	89
OptraDam Plus	
OptraContact	
OptraSculpt	
OptraPol	
OptraFine	
OptraStick	
Astropol	
Politip	
Astrobrush	
Cavifil Injector	
VivaPad	
Polyart Mixing Pad	
P1 Instrument	
Brush Holders	
Brushes, hard	
Brushes, soft	
Vivabrush	
VivaBrush G	
Vivadent Applicator	
Cannulas	



Direct Restorative Therapy

CLINICAL ACCESSORIES

ADHESIVES

ISOLATION



OptraGate® ExtraSoft

Patient-friendly, latex-free OptraGate ExtraSoft for facilitated access to an enlarged treatment field.



OptraDam® Plus

The anatomically shaped, patient-friendly OptraDam Plus for absolute isolation.

TOTAL-ETCH METHOD



Total Etch

Etching gel containing 37% phosphoric acid



ExciTE® F

Light-curing, filled single-component adhesive with fluoride release.



Syntac®

The classic adhesive system for direct and indirect restorations.

SELF-ETCH METHOD



AdheSE® One F

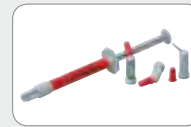
Self-etching all-in-one adhesive with fluoride release in the ergonomic VivaPen.



AdheSE®

Light-curing, filled two-component adhesive.

FLOWABLE COMPOSITE



Tetric EvoFlow®

Nano-optimized flowable composite available in 14 shades.

High-End Esthetics

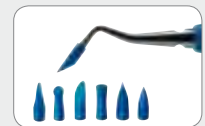
NEW



IPS Empress Direct®

Nano-hybrid composite for the highest of demands in 32 shades.

Modelling Instrument



OptraSculpt

Modelling instrument for composites with 6 different exchangeable and disposable working ends.

CURING LIGHTS

On a Maximum Mission



bluephase® 20i (2.000 mW/cm²)

bluephase®
Licence to Cure
LED for every use

COMPOSITES

SCULPTABLE COMPOSITES

High-Quality Standard Restorations

NEW



Tetric EvoCeram®

Clinically proven nano-hybrid composite available in 22 shades, now in new design.

NEW



Tetric EvoCeram® Bulk Fill

Nano-hybrid composite for posterior teeth (up to 4 mm layers), available in 3 universal shades

Economical Basic Restorations



Tetric®

Clinically proven micro-hybrid composite available in 10 shades.

POLISHING SYSTEMS

MULTI-STEP



Astropol®

High-performance 3-step polishing system for composites – 4 shapes.



Astrobrush®

Three different flexible polishing brushes for final high-gloss polishing of occlusal surfaces.

SINGLE-STEP

NEW



OptraPol®

Highly efficient 1-step polishers for composites – 4 shapes.

AFTER CARE

PROFESSIONAL CARE



Fluor Protector

Fluoride-containing protective varnish for desensitization and caries prevention.

NEW



Proxyl®

The fine Proxyl paste for economic and particularly gentle cleaning and polishing.

MANUAL INSTRUMENTS

Contact Point Instrument



OptraContact

Instrument used to design proximal contacts in the posterior region.

On a Proven Mission



bluephase®
(1.200 mW/cm²)

On an Economical Mission



bluephase® C8
(800 mW/cm²)



The only Direct Composite that can be called Empress®

Confidence

Reliability

Esthetics

The esthetics of ceramic with the convenience of composite.

- Exceptional Handling
- Simplified Application
- True-To-Nature™ Shades
- Superior Polish



Empress Direct®

Direct Esthetic Composite



IPS Empress® Direct

Light-curing nano hybrid composite for the direct highly esthetic restorative procedures.



before



after

Indications:

- Anterior restorations (Class III and IV)
- Posterior restorations (Class I, II)
- Cervical restorations (Class V, e.g. cervical caries, root erosion, wedge-shaped defects)
- Adjustment of tooth position and shape (e.g. diastema closure, closure of interdental “black triangles”, lengthening of the incisal edge)
- Direct veneers

Advantages:

- Wide range of indications for anterior and posterior teeth
- Wide range of shades in various degrees of translucency
- Not bound to one given layering technique
- Good polishing properties and high surface luster
- Lifelike fluorescence
- Low sensitivity to light
- Outstanding radiopacity
- Compatible with Tetric EvoFlow and Tetric Color
- The shade guide of the system is autoclavable and made of ceramic: the shade guide retains its precision over many years as the shade samples do not fade if they are exposed to light

Shades:

Dentin shades:

A1, A2, A3, A3,5, A4, A5, A6, B1, B2, C3, D2, Bleach L, Bleach XL

Enamel shades:

A1, A2, A3, A3,5, A4, B1, B2, B3, B4, C1, C2, C3, D2, D3, Bleach L, Bleach XL

Translucent: Trans 20, Trans 30, Trans Opal

Delivery forms

Syringes

Basic Kit	8 x 3 g	627218AN
------------------	----------------	-----------------

Dentin: A1, A2, A3

Enamel: A1, A2, A3

Translucent: Trans 30, Trans Opal

Refill	1 x 3 g	See p. 1!
---------------	----------------	------------------

1 syringe 3 g each (32 shades)

Shade Guide IPS Empress Direct Dentin	1x	627214
--	-----------	---------------

Shade Guide IPS Empress Direct Enamel	1x	627215
--	-----------	---------------

Cavifils

Basic Kit	80 x 0.2 g	627217AN
------------------	-------------------	-----------------

Dentin: A1, A2, A3

Enamel: A1, A2, A3

Translucent: Trans 30, Trans Opal

Refill	10 x 0,2 g	see p. 1!
---------------	-------------------	------------------

10 Cavifils à 0.2 g (32 shades)

IPS Empress® Direct Flow "Art"

IPS Empress Direct Flow is a light-curing flowable nano-hybrid composite available in three effect shades. This composite is used for the creation of highly esthetic restorations in the anterior region. These special flowable materials are supplied in convenient syringes.



Indications:

- For creating lifelike esthetic effects in the incisal third
- Anterior restorations (Classes III, IV)
- Small restorations of all types
- Repair of composite/ceramic veneers

Advantages:

- Ideal addition to the IPS Empress Direct range of materials for the creation of special effects
- Unique Trans Opal Flow shade for a lifelike esthetic opalescence
- Lifelike translucency for the optimum reproduction of the incisal area
- Exceptional capability to re-create individual features, such as fluorosis
- Precise application due to the delicate 0.9 mm cannula
- Convenient handling due to ergonomically shaped syringe
- Optimum surface affinity while ensuring stability
- Ideal consistency for contouring with the brush
- Excellent polishability

Shades:

Trans Opal, Trans 30, Bleach XL

Delivery forms

Syringes

Refill	1 x 1.8 g	See p. 1!
1 syringe 1.8 g each (3 shades)		

IPS Empress Direct® Color

IPS Empress Direct Color comprises seven selected shades for the life-like characterization of direct and CAD/CAM-fabricated restorations as well as for masking discoloured tooth structure.



Indications:

- Individual characterization of direct and lab-fabricated composite restorations
- Masking of discoloured tooth structure
- Characterization of CAD/CAM veneers fabricated chairside

Advantages:

- True-to-nature characterization of high-end composite and CAD/CAM-fabricated restorations
- User-friendly direct application without dilution
- High masking capability even when applied in thin layers
- Smooth consistency
- Ultra-fine, 0.4-mm tips for precise application
- The ideal complement to IPS Empress Direct and IPS Empress CAD

Shades:

white, honey yellow, ochre, brown, purple, blue, grey

Delivery forms

Syringes

Refill	1 x 1 g	
white		637899AN
honey yellow		637900AN
ochre		637903AN
brown		637904AN
purple		637902AN
blue		637901AN
grey		637905AN

IPS Empress Direct® Opaque

IPS Empress Direct Opaque is a light-curing opaquing material suitable for masking exposed metal surface and discoloured tooth structure.



Indications:

- Masking of
- exposed metal surfaces when repairing damaged ceramic or composite veneers intraorally
 - discoloured tooth structure

Advantages:

- High masking capability even when applied in thin layers
- The ideal complement to the IPS Empress System
- Universal opaque shade, no shade matching required

Shade:

opaque

Delivery forms

Syringes

Refill	1 x 1.8 g	637897AN
1 syringe, 1.8 g (opaque)		
Assortment		637898AN
IPS Empress Direct Color	7 x 1 g each	
white, honey yellow, ochre, brown, purple, blue, grey		
IPS Empress Direct Opaque	1 x 1.8 g	

Shades	IPS Empress® Direct Cavifils 10 x 0.2 g	IPS Empress® Direct Syringes 1 x 3 g	IPS Empress® Direct Flow "Art" Syringes 1 x 1.8 g	Tetric EvoCeram® Cavifils 20 x 0.2 g	Tetric EvoCeram® Syringes 1 x 3 g	Tetric EvoCeram® Syringes 3 x 3 g	Tetric EvoFlow® Cavifils 20 x 0.2 g	Tetric EvoFlow® Syringes 1 x 2 g	Tetric® Syringes 1 x 3 g	Tetric® Cavifils 20 x 0.2 g	Tetric® Syringes 3 x 3 g	Tetric® Cavifils 60 x 0.2 g
105												
A1	627270	627232		590331	590312	590293	595987	595953	612446	612456		
A2	627271	627233		590332	590313	590294	595988	595954	612447	612457		
A3	627272	627234		590333	590314	590295	595989	595955	612448	612458		
A3.5	627273	627235		590334	590315	590296	595990	595956	612449	612459		
A4	627274	627236		590335	590316	590297	595992	595978	612450	612460		
B1	627275	627237		637354	637547	637734						
B2	627276	627238		590336	590317	590298			612452	612462		
B3	627277	627239		590337	590318	590299	595991	595991	612451	612461		
B4	627278	627240										
C1	627279	627241		590338	590319	590300						
C2	627280	627242		590339	590320	590301						
C3	627281	627243		590340	590321	590302						
C4												
D2	627282	627244		637355	637548	637735						
D3	627283	627245		590341	590322	590303						
D4												
110 T												
420 T												
540												
Bleach XL	627285	627247	635341	590346	590327	590308	595995	595981				
Bleach L	627284	627246		590347	590328	590309	595996	595982				
Bleach I				590348	590329	590310	595997	595983				
Bleach M				590349	590330	590311	596008	595984				
A1 Dentin	627258	627220										
A2 Dentin	627259	627221										
A3 Dentin	627260	627222										
A3.5 Dentin	627623	627624		590342	590323	590304	595994	595980	612453	612463		
A4 Dentin	627261	627223		590343	590324	590305						
IVA5 Dentin	627262	627224										
IVA6 Dentin	627263	627225										
B1 Dentin	627264	627226										
B2 Dentin	627265	627227		590344	590325	590306						
B3 Dentin												
C3 Dentin	627266	627228										
C4 Dentin												
D2 Dentin	627267	627229										
D4 Dentin												
Bleach XL Dentin	627269	627231										
Bleach L Dentin	627268	627230										
Effect White												
Effect Blue												
Effect Amber												
Effect Clear												
Eff. Super Clear												
Transparent				590345	590326	590307	595993	595979				
Trans 20	627286	627248										
Trans 30	627287	627249	635343									
Trans Opal	627288	627250	635342									
IVA5							596009	595985				
IVA6							596010	595986				
WE												
GE												
TW												
TG												
T									612454	612464		
Basic White											612467	612445



Tetric EvoCeram[®]

Direct Composite Technology has **Evo**lved

A sophisticated chemical composition offering a balanced combination of properties:

- **Proven clinical performance**
Over 85,000,000 Tetric EvoCeram[®] restorations worldwide
- **Polymerization on demand (POD)**
A long working time, combined with a short curing time
- **Natural shade blend**
Coordinated light refraction indexes of fillers, monomer matrix and nano-colour pigments



Tetric EvoCeram[®]

Tetric EvoCeram®

Light-curing, universal nano-hybrid composite for high-end standard restorations in the anterior and posterior region. Tetric EvoCeram is now offered in improved, ergonomically shaped syringes and in Cavifils.



Indications:

- Anterior restorations (Class III and IV)
- Restorations in the posterior region (Classes I and II, also occlusion-bearing)
- Class V restorations (cervical caries, wedge-shaped defects, root erosion)
- Veneering of discoloured anterior teeth
- Splinting of mobile teeth
- Extended fissure sealing in molars and premolars

Advantages:

- Polymerization on demand (POD)
 - Sufficient time to model and sculpt the restoration due to reduced sensitivity to ambient light
 - Short curing time of only 10 s for all shades
- Natural shade blend due to optimally coordinated light refraction indices of fillers, monomer matrix and nano-colour pigments
- Proven clinical performance
 - More than 85 million Tetric EvoCeram restorations worldwide
 - The five-year results of four clinical studies show that not a single restoration had to be replaced

Shades:

Dentin shades: A2 Dentin, A3.5 Dentin, A4 Dentin, B2 Dentin

Enamel shades: A1, A2, A3, A3.5, A4, B1, B2, B3, C1, C2, C3, D2, D3

Highly translucent incisal shade: T

Bleach shades: Bleach XL, Bleach L, Bleach M, Bleach I

Delivery forms

Syringes

Assortment	8 x 3 g	590290
-------------------	----------------	---------------

1 x A1, 1 x A2, 1 x A3, 1 x A3.5, 1 x A4, 1 x B3, 1 x C3, 1 x D3
Tetric EvoCeram Shade Guide

Refill	3 x 3 g	See p. 10
---------------	----------------	------------------

3 Syringes, 3 g each (22 shades)

Refill	1 x 3 g	See p. 10
---------------	----------------	------------------

1 Syringe, 3 g each (22 shades)

Cavifils

Assortment	40 x 0.2 g	590291
-------------------	-------------------	---------------

5 x A1, 5 x A2, 5 x A3, 5 x A3.5, 5 x A4, 5 x B3, 5 x C3, 5 x D3
Tetric EvoCeram Shade Guide

Refill	20 x 0.2 g	See p. 10
---------------	-------------------	------------------

20 Cavifils, 0.2 g each (22 shades)

Shade Guide	1x	590292
--------------------	-----------	---------------

Tetric EvoCeram® Bulk Fill

Light-curing, radiopaque, nano-hybrid composite for direct restorations in the posterior region. It is available in three universal shades and can be placed in increments of up to 4 mm. Due to the material's natural shade adaptation, high-end results can be achieved quickly.



Indications:

- Restoration of deciduous teeth
- Restoration of posterior teeth (Classes I and II)
- Class-V restorations (cervical caries, root erosion, wedge-shaped defects)
- Extended fissure sealing in molars and premolars

Advantages:

Well-balanced chemistry for standard restorative procedures in the posterior teeth

- **Short treatment time**
4-mm increments: One filling, one material
- **Natural shade blend**
Three shades offering lifelike translucency and coordinated refraction indices of fillers and monomer matrix
- **Ideally adjusted consistency**
Smooth yet packable consistency so that the composite adapts readily to cavity walls

Shades:

Universal shades: IVA, IVB, IVW

Delivery forms

Syringes

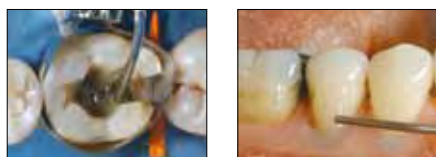
Refill	1 x 3 g	
IVA		638244
IVB		638245
IVW		638246
Refill	3 x 3 g	
IVA		638241
IVB		638242
IVW		638243

Cavifils

Refill	20 x 0.2 g	
IVA		638227
IVB		638228
IVW		638229

Tetric EvoFlow®

Tetric EvoFlow is a light-curing, radiopaque nanohybrid composite that is based on the latest technology for direct restorative therapy and the cementation of ceramic and composite restorations. The material is supplied in syringes and Cavifils.



Indications:

- As initial layer under Class I and II restorations
- Anterior restorations (Class III and IV)
- Class V restorations (cervical caries, root erosion, wedge-shaped defects)
- Small restorations of all types
- Extended fissure sealing
- Splinting of mobile teeth
- Blocking out of undercuts
- Adhesive cementation of indirect composite or ceramic restorations
- Repair of composite and ceramic veneers

Advantages:

- Based on the combination of proven technologies and innovative nano-technology:
 - Nano-fillers complete the well-balanced filler technology. They are the basis for the material's esthetic appearance and the clinical success of the restoration.
 - The nano-colour pigments are responsible for improving the adjustment of the shade. The balanced chameleon effect will render small restorations virtually invisible.
 - The nano-modifier ensures optimum surface affinity of the material in all situations whilst providing the stability required for Class V restorations.
- Because of the material's excellent surface affinity, Tetric EvoFlow is ideal as an initial layer under regular-viscosity composites, such as Tetric EvoCeram.
- Stable, if required
- Radiopacity unmatched by any other flowable composite
- Accurate application due to Cavifils with extra-thin tips or syringes with suitable metal cannulas
- A clearly arranged colour coding helps to spot the correct shade immediately
- Expiry date provided on every syringe and Cavifil

Shades:

Dentin shades: A3.5 Dentin

Enamel shades: A1, A2, A3, A3.5, A4, B3, IVA5, IVA6

Highly translucent incisal shade: T

Bleach shades: Bleach XL, Bleach L, Bleach M, Bleach I

Delivery forms

Syringes

Assortment	8 x 2 g	595951
1 x A1, 1 x A2, 1 x A3, 1 x A3.5, 1 x A3.5 Dentin, 1 x A4, 1 x B3, 1 x T Tetric EvoFlow Shade Guide, Tetric EvoFlow Cannulas		

Refill	1 x 2 g	See p. 10
1 Syringe, 2 g each (14 shades)		

Cavifils

Assortment	40 x 0.2 g	595950
5 x A1, 5 x A2, 5 x A3, 5 x A3.5, 5 x A3.5 Dentin, 5 x A4, 5 x B3, 5 x T Tetric EvoFlow Shade Guide		

Refill	20 x 0.2 g	See p. 10
20 Cavifils, 0.2 g each (14 shades)		

Shade Guide	1x	595952
-------------	----	--------

Tetric®

Light-curing, universal microhybrid composite with a special filler composition. Available in syringes and cavifils.



before



after



before



after: with Tetric Basic White

Indications:

- Anterior and posterior restorations

Advantages:

- Easy direct application by means of Cavifils and the corresponding Injector
- Excellent working properties
- Does not stick to the instrument
- Optimum modelling properties
- High abrasion resistance
- Very high radiopacity
- Fluoride release
- Natural shade effect (3 degrees of translucency and 10 shades available)
- Stability of shade

Shades:

Universal shades: 110/A1, 130/B2, 140/A2, 210/A3, 230/A3.5, 310/B3, 340/A4, 410/D3, 510/C3

Highly translucent Incisal shade: T

Dentin shades: 130/B2, 230/A3.5, 340/A4

Delivery forms

Syringes

Refill	1 x 3 g	See p. 10
1 Syringe, 3g each (9 shades)		

Refill	3 x 3 g	See p. 10
3 Syringe, 3g each (1 shade)		

Cavifils

Refill	20 x 0.2 g	See p. 10
20 Cavifils, 0.2 g each (9 shades)		

Refill	60 x 0.2 g	See p. 10
60 Cavifils, 0.2 g each (1 shade)		

Shade Guide	1x	612524
--------------------	-----------	---------------

Tetric Ceram® HB

Light-curing, high-viscosity, fine-particle microhybrid composite material based on mouldable ceramics technology in syringes and Cavifils.



vorher



nachher

Indications:

- Restorations in the posterior region (Classes I and II, also occlusion-bearing)
- Restorations in deciduous dentitions

Advantages:

- Easy handling characteristics thanks to high viscosity
- Simplified creation of proximal contact areas
- Unparalleled esthetics
- High abrasion resistance
- Very high radiopacity (330% Al)
- Available in syringes or specifically designed Cavifils

Shades:

110/A1, 130/B2, 140/A2, 210/A3, 230/A3.5, 430/C2

Delivery forms

Syringes

Refill	1 x 4 g	See p. 11
1 Syringe, 4 g each (6 shades)		

Cavifils

Refill	20 x 0.25 g	See p. 11
20 Cavifils, 0.25 g each (6 shades)		

Shade Guide	1x	560439
-------------	----	--------

Tetric® Color

Tetric Color is a light-curing characterization and opaquer material for individualized shade characterizations of direct and indirect composite restorations and for masking discoloured tooth structure. Tetric Color is applied below or in between the layers of the composite restorative.



Indications:

- Individualized characterization of direct and lab-fabricated composite restorations
- Auxiliary material for the fabrication of direct labial veneers
- Masking of discolouration
- Staining material when covering implant attachments

Advantages:

- Excellent handling
- Ultra thin tip for economical direct application
- True-to-nature shades
- Usable with all Ivoclar Vivadent restorative materials: Artemis, Tetric EvoCeram, Tetric Ceram HB, Tetric Flow, Heliomolar, Heliomolar Flow, Heliomolar HB, Helio Progress, Compoglass Flow, Compoglass F

Shades:

white, light-yellow, bluish-grey, ochre, medium-brown, dark-brown, black

Delivery forms

Assortment	7 x 1 g	557028
white, black, light-yellow, ochre, medium-brown, dark-brown, bluish-grey, var. accessories		

Refill	1 x 1 g
White	557020
Light-yellow	557021
Bluish-grey	557022
Ochre	557023
Medium-brown	557024
Dark-brown	557025
Black	557026

Monopaque®

Light-curing single-component opaquer in syringes.



Indications:

- Masking of exposed metal surfaces

Advantages:

- Ready-to-use single-component material
- Material does not separate
- Strong masking effect
- Available in 3 shades

Shades:

X-white opaque, 110/A1 opaque, 210/A3 opaque

Delivery forms

Refill	3 g each	
X-white opaque		555755
110/A1 opaque		555756
210/A3 opaque		555943

Ceramic Repair

Comprehensive set for intraoral repairs of ceramic and composite restorations.



Indications:

Repair of fractures in:

- Ceramic-veneered restorations
- All-ceramic restorations
- Composite restorations

Advantages:

- High shear bond values
- Ease of handling
- Ergonomic working procedure

Delivery forms

Intro Pack		628838
Tetric EvoCeram	3 x 3 g	
Monopaque	1 x 3 g	
Monobond Plus	1 x 5 g	
Heliobond	1 x 6 g	
var. accessories		

Five quick steps to success:



1. Silanize with Monobond Plus



2. Apply Monopaque opaquer



3. Apply Heliobond bonding agent



4. Repair the restoration with Tetric EvoCeram

Helio Progress®

Light-curing microfilled composite in syringes for anterior restorations.



Indications:

- Class III, IV, V restorations

Advantages:

- Polishable to a high gloss; stable shade
- Excellent marginal adaptation and durable marginal seal
- High stability of shape
- Available in 7 shades to suit individual requirements

Shades:

110/A1, 140/A2, 310/B3, 340/A4, 410/D3, 440/D4, 510/C3

Delivery forms

Refill	1 x 2.5 g	See p. 11
1 Syringe, 2.5 g each (7 shades)		

Heliomolar®

Light-curing universal microfilled composite in syringes and Cavifils.



Indications:

- Anterior and posterior restorations

Advantages:

- Easy direct application by means of Cavifils and the corresponding Injector
- Polishable to a high gloss; stable shade
- Excellent marginal adaptation and durable marginal seal
- High stability of shape and durable contact points
- High radiopacity and continuous fluoride release
- Excellent abrasion resistance

Shades:

105/-, 110/A1, 110T/A1T, 140/A2, 210/A3, 310/B3, 340/A4, 410/D3, 420T/-, 440/D4, 510/C3

Delivery forms

Syringes

Assortment	8 x 3 g	550576
105, 110/A1, 110/T, 140/A2, 210/A3, 410/D3, 420/T, 510/C3		
Refill	1 x 3 g	See p. 11
1 Syringe, 3 g each (11 shades)		

Cavifils

Assortment	40 x 0.25 g	550575
105, 110/A1, 140/A2, 210/A3, 410/D3, 510/C3, 110/T, 420/T, var. accessories		
Refill	20 x 0.25 g	See p. 11
20 Cavifils, 0.25 g each (11 shades)		
Shade Guide	1x	550577

* Heliomolar® HB

Fast, light-curing, high-viscosity, micro-filled composite material based on mouldable ceramics technology in syringes and Cavifils.



before



after

Indications:

- Restorations in the posterior region (Classes I and II, also occlusion-bearing)
- Restorations in deciduous dentitions

Advantages:

- Easy handling characteristics thanks to high viscosity
- Simplified creation of proximal contact areas
- High abrasion resistance
- High radiopacity (265% Al)
- Good polishing
- Low shrinkage
- Available in syringes or specifically designed Cavifils

Shades:

110/A1, 130/B2, 140/A2, 210/A3, 230/A3.5, 430/C2, B1, D2, 110T/WE, 420T/GE, TW, TG

Delivery forms

Syringes

Refill	1 x 3 g	See p. 11
1 Syringe, 3 g each (11 shades)		

Cavifils

Refill	20 x 0.25 g	See p. 11
20 Cavifils, 0.25 g each (11 shades)		

Shade Guide	1x	560203
--------------------	-----------	---------------

* Heliomolar® Flow

Light-curing flowable microfilled composite in syringes.



Indications:

- Cervical restorations
- Anterior restorations
- Small restorations in the posterior region
- Extended fissure sealing in molars and premolars
- Repair of composite and ceramic veneers
- Blocking out of undercuts
- Adhesive cementation of indirect composite or ceramic restorations
- Splinting of mobile teeth
- As initial layer under Class I and II restorations
- Finishing layer on viscous composite material

Advantages:

- Convenient syringes containing 1.6 g of material
- Very thin, pre-bent metal cannulas
- Easy access to mini-cavities
- Bubble-free direct application
- Accurate, economical application

Shades:

105/–, 110/A1, 140/A2, 210/A3, 410/D3, 110T/A1T, 420T/–

Delivery forms

Assortment	7 x 1,6 g	557019
105, 110/A1, 140/A2, 210/A3, 410/D3, 110/T, 420/T, var. accessories		

Refill	1 x 1,6 g	See p. 11
1 Syringe, 1.6 g each (7 shades)		

* Not available in all the countries

Compoglass® F

Light-curing, compomer-based restorative material in Cavifils or syringes.



SWV



RM/C

Indications:

- Restorations in deciduous teeth
- Class III and V restorations
- Intermediate restorations

Advantages:

- Application without phosphoric acid etching possible
- High fluoride release
- Easy direct application by means of Cavifils and the corresponding Injector
- Excellent esthetic properties
- Easy contouring and polishing
- No rubber dam required

Shades:

105/-, 110/A1, 140/A2, 210/A3, 230/A3.5, 310/B3, 340/A4, 410/D3, 510/C3, 540/-

Delivery forms

Syringes

Refill	1 x 3.5 g	See p. 11
210/A3		

Cavifils

Intro Pack	574992
------------	--------

A1, A3, A3.5, A4	10 x 0.25 g each
AdheSE Primer/Bonding	1 x 2.5 g each
AdheSE Pad	1x
Compoglass F Shade Guide	1x
var. accessories	

Refill	20 x 0.25 g	See p. 11
--------	-------------	-----------

20 Cavifils, 0.25 g each (10 shades)

Compoglass® Flow

Light-curing, flowable compomer-based restorative material in Cavifils.



Indications:

- Restorations in deciduous teeth
- Class III and V restorations
- Intermediate restorations

Advantages:

- Ease of handling
- High fluoride release
- Reliable self-adaptation
- No material flowing away
- No trapping of air
- Excellent marginal seal
- Accurate direct application technique

Shades:

140/A2, 210/A3, 230/A3.5, 340/A4

Delivery forms

Refill	20 x 0.25 g	See p. 11
--------	-------------	-----------

20 Cavifils, 0.25 g each (4 shades)

Excite® F

Excite F is a light-curing, fluoride-releasing single-component adhesive that is suitable for the total-etch technique.



Indications:

- Direct light- and dual-cure composite and compomer restorations
- Adhesive luting of indirect restorations involving light-curing

Advantages:

- Convenient and economical application with the VivaPen (approx. 120 applications)
- Also available in bottles and single dose vessels
- High adhesion values on enamel and dentin
- Acetone-free (alcohol-based solvent)
- Fluoride release
- Reduced post-operative sensitivity

Delivery forms

Intro Pack VivaPen		627177
Excite F VivaPen	1 x 2 ml	
Total Etch Etching Gel	1 x 2 g	
var. accessories		
Refill VivaPen	1 x 2 ml	613724
var. accessories		
Refill VivaPen	3 x 2 ml	626969
var. accessories		
Refill VivaPen Snap-on Cannulas	100x	627178
Refill VivaPen Protective Sleeves	300x	627492
Refill Bottle	1 x 5 g	630375
Refill Bottle	2 x 5 g	630376
Refill Regular Applicators	50x	631699
Refill Single Dose	50 x 0.1 g	630377

Excite® F DSC

Excite F DSC is a dual-cure, fluoride-releasing enamel and dentin adhesive that is suitable for the total-etch technique.



Regular Small/Endo

Indications:

- Adhesive cementation of root posts (e.g. FRC Postec Plus)
- Adhesive cementation of indirect, metal-free translucent restorations with dual- or self-curing luting composites (e.g. Variolink® II)
- Direct restorations and core build-ups with dual- or self-curing composites (e.g. MultiCore®)

Advantages:

- Patented initiator-coated applicator brush
- Time-saving: one step, one coat
- No light-curing necessary
- High bonding values on enamel and dentin
- Single-dose presentation with applicators in two different sizes: Regular and Small / Endo

Delivery forms

Refill		
Regular	20 x 0.1 g	634669
Regular	50 x 0.1 g	630378
Small/Endo	20 x 0.1 g	634668
Small/Endo	50 x 0.1 g	630380

Excite® F

Click & Bond® with the VivaPen®

Now featuring a fill-level indicator

Economical – around 120 applications per VivaPen

Precise application



Fluoride releasing, light-curing Total-Etch adhesive

Also available in the bottle and the single dose vessel.



AdheSE® One F

Click & Bond® with the VivaPen®

AdheSE One F is a self-etching, light-curing, fluoride-releasing all-in-one adhesive in the unique VivaPen.



Indications:

- Adhesive for direct composite and compomer restorations

Advantages:

- Easy and time-saving direct application
- Effect dispensing – sufficient for around 120 applications
- Strong bond on enamel and dentin
- Fluoride release
- Storage at room temperature

Delivery forms

Refill /1	1 x 2 ml	613725
var. accessories		
Refill /3	3 x 2 ml	626967
var. accessories		

Refill VivaPen Snap-On Cannulas	100x	627178
Refill VivaPen Protective Sleeves	300x	627492

AdheSE®

AdheSE is a self-etching, light-curing two-component adhesive.



Indications:

- Direct composite restorations in Class I – V cavities
- After light curing of AdheSE Bond suitable for core build-ups with dual- or self-curing composites (e.g. MultiCore)

Advantages:

- Saves time as no etching is required
- Economical - for approx. 150 applications
- Safe, easy handling due to colour-coded bottles and application wells
- Very high bond strength
- No refrigeration required

Delivery forms

Intro Pack	2 x 5 g	573690
AdheSE Primer and Bonding, var. accessories		
Refill Primer and Bonding	2 x 5 g	573691

Refill Primer	1 x 5 g	573692
Refill Bonding	1 x 5 g	573693
Refill Applicator	2 x 25	564600

AdheSE® DC Activator

With AdheSE DC Activator, AdheSE becomes a dual-curing adhesive system for the application with self- or dual-curing composites or cementation materials.



Indications:

- Adhesive cementation of indirect metal-free restorations or of metal-free posts (eg FRC Postec Plus) with dual or self-curing composites (eg Variolink II)
- Direct restorations and core build-ups with dual- or self-curing composites (e.g. MultiCore)

Advantages:

- Saves time as no etching is required
- Covers all indications of adhesive dentistry
- No separate light curing required
- Safe, easy handling due to colour-coded bottles and application wells
- No refrigeration required
- Very high bond strength

Delivery forms

System Pack	3 x 5 g	590509
AdheSE DC Activator Bottle, AdheSE Primer and Bonding, var. accessories		

Refill	5 g	576811
AdheSE DC Activator Bottle		
Refill Pad	1x	591450

Syntac®

Syntac is the classic adhesive system for a chemically sound bond between the composite materials and the tooth structure.



Advantages:

- For direct and indirect restorations
- Clinically proven for many years
- Reduction of post-operative sensitivity
- Excellent instant bond between dentin/enamel and composite
- High bond strength

Delivery forms

Assortment	2 x 3 g / 1 x 6 g	532891
Syntac Primer, Syntac Adhesive, Heliobond, var. accessories		
Refill Primer	1 x 3 g	532893
Refill Adhesive	1 x 3 g	532892

Heliobond

Heliobond is a light-curing single-component bonding agent to optimize enamel etching with all light-curing restorative materials.



Indications:

- Adhesive for enamel bonding
- Together with Syntac also dentin bonding agent
- Cementation of tooth jewellery, e.g. Skyce
- Transparent sealing of fissures and restorations
- As a bonding layer for the reparation of composite, crown and bridge restorations

Advantages:

- For optimum marginal seal between tooth and composite. Applied in conjunction with the enamel etch technique

Delivery forms

Refill	1 x 11 g	532906
Refill	1 x 6 g	532907

Total Etch

Total Etch is a 37% phosphoric acid gel.



Indications:

- Partial etching technique for adhesive restorations
- Total-Etch technique for adhesive restorations
- Fissure sealings
- Cementation of brackets and tooth jewellery (e.g. Skyce)
- Adhesive cementation

Advantages:

- The conventional etching gel with balanced handling properties
- Strong contrast to the tooth
- Pre-bent metal cannulas for accurate application
- Jumbo delivery form to keep adequate amounts of gel in stock







Delivery forms

Assortment Total Etch Jumbo	1 x 30 g / 2 x 2 g	558530
Total Etch Jumbo, Total Etch, var. accessories		
Refill	2 x 2 g	550588

Overview of light-curing adhesives

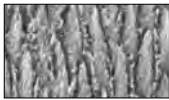
Working steps	Total-Etch Adhesives		Self-Etch Adhesives	
	Syntac	Excite F	AdheSE	AdheSE One F
Enamel conditioning	Total Etch 	Total Etch 	AdheSE Primer 	AdheSE One F 
Dentin conditioning	Syntac Primer 			
Priming	Syntac Adhesive 	Excite F 		
Bonding	Heliobond 		AdheSE Bonding 	

Adhesives for indirect restorations

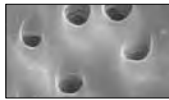
Indirect restorations	Total-Etch Adhesives		Self-Etch Adhesive
	Syntac	Excite F DSC	AdheSE + DC Aktivator
Enamel conditioning	Total Etch 	Total Etch 	AdheSE Primer 
Dentin conditioning	Syntac Primer 		
Priming	Syntac Adhesive 	Excite F DSC 	
Bonding	Heliobond 		AdheSE Bonding + DC Aktivator 

Email Preparator blue

37% phosphoric acid in a liquid delivery form.



Enamel after etching
with phosphoric acid



Dentin after etching:
Open dentinal tubules
and no remaining smear
layer

Indications:

- Enamel etching and dentin conditioning for sealants, composite restorations, and for the adhesive cementation of restorations.

Advantages:

- Micro-interlocking of Heliobond bonding agent with the etched enamel
- The material flows well into the fissures due to the low viscosity
- Reliable retention of the sealant, composite, and the seated restoration

Delivery forms

Refill	1 x 6 g	533034
---------------	----------------	---------------

Amalcap® Plus

Non-Gamma-2 high-silver amalgam in self-activating capsules.

The alloy is composed of: Ag 70.1%, Sn 18.0%, Cu 11.9%



Indications:

- For restorations of molars and premolars

Advantages:

- High-silver amalgam without Gamma-2 phase
- High corrosion resistance and edge strength
- Self-activating system with automatic activation during mixing in the Silamat.
Two working times:
~ 3 min = fast setting
~ 4 min = regular setting

Delivery forms

Refill	50 units
Regular No. 1	532287
Regular No. 2	532288
Regular No. 3	532289
Fast No. 1	532281
Fast No. 2	532282
Fast No. 3	532283

Vivacap®

Non-Gamma-2 high-copper amalgam in self-activating Vivacap capsules.

The alloy is composed of: Ag 46.5%, Sn 30%, Cu 23.5%



Indications:

- For restorations of molars and premolars

Advantages:

- High-resistance (HR) amalgam restorations without Gamma-2-phase
- Good carving and modelling properties
- Carving time of approx. 4 minutes
- Durable restorations with glossy surfaces
- Tight marginal seal
- Slight setting expansion enhances marginal adaptation

Delivery forms


Refill	50 units
No. 1	532321
No. 2	532322
No. 3	532323

IPS Empress®




IPS Empress ceramic material has been known and established for processing in the laboratory for 20 years. Since the introduction of IPS Empress CAD, esthetic restorations may also be fabricated in the dental office by means of CAD/CAM. Moreover, the IPS Empress family is supplemented by a composite for direct restorative therapy: IPS Empress Direct (see under Composites).

IPS Empress CAD blocks are suitable for the fabrication of all-ceramic inlays, onlays, veneers, and crowns by means of CAD/CAM. They are available in two levels of translucency (high translucency and low translucency) as well as a polychromatic IPS Empress CAD Multi Block.

IPS Empress CAD restorations are finally either only polished or stained and glazed, and adhesively cemented.



IPS Empress® System

DENTAL TECHNICIAN	CAD/CAM USERS	DENTIST
<p>IPS Empress Esthetic</p>  <p>Ceramic restorations fabricated in the laboratory</p>	<p>IPS Empress CAD</p>  <p>Ceramic restorations chairside or labside fabricated</p>	<p>IPS Empress Direct</p>  <p>Directe composites Filling therapy</p>

IPS Empress® CAD for CEREC® Basic Kit A–D

The Basic Kit contains a selection of blocks in the most popular A–D shades, as well as the necessary processing accessories, such as spray and polishing assortment. Thus, the Basic Kit provides all the products required for the entire chairside treatment procedure. The Basic Kit is supplied in the Material Box.



Delivery forms

IPS Empress CAD for CEREC Basic Kit A–D	602475
HT Blocks	
Shade/Size: A1 / I12, A2 / I12, A3 / I12, B1 / I12	5 each
LT Blocks	
Shade/Size: A1 / C14, A2 / C14, A3 / C14, B1 / C14 BL2 / C14	5 each
Multi Blocks	
Shade/Size: A1 / C14 L, A2 / C14 L, A3 / C14 L	5 each
IPS Contrast Spray chairside	1 x 50 ml
OptraFine Assortment	1x
OptraGate S, OptraGate R	4 each
OptraDam S, OptraDam R	4 each
Bleach BL Shade Guide	1x
IPS Empress CAD HT/LT Shade Guide	1x
Virtual CADbite	1 x 50 ml

IPS Empress® CAD for CEREC® Trial Kit A-D

The Trial Kit contains a small selection of blocks in A-D shades, as well as the necessary processing accessories, such as spray, cementation materials, polishing assortment. Thus, the Trial Kit provides all the products required for the first CEREC restorations.



Delivery forms

IPS Empress CAD for CEREC Trial Kit A-D	602479
HT Blocks	
Shade/Size: A1 / I12, A2 / I12, A3 / I12, B1 / I12	1 each
LT Blocks	
Shade/Size: A1 / C14, A2 / C14, A3 / C14, B1 / C14 BL2 / C14	1 each
Multi Blocks	
Shade/Size: A1 / C14 L, A2 / C14 L, A3 / C14 L	1 each
IPS Contrast Spray chairside	1x 50 ml
Multilink Automix Syringe, transparent	9 g
Monobond Plus	5 g
Multilink-Primer A and B	3 g each
OptraFine Promo Pack	1x
OptraGate S, OptraGate R	2 each
OptraDam S, OptraDam R	2 each
IPS Empress Universal Glaze	3 g
IPS Empress Universal Glaze and Stain Liquid	1 x 15 ml
Virtual CADbite	1 x 50 ml

IPS Empress® CAD HT

The IPS Empress CAD HT blocks exhibit a higher translucency and lower brightness value than the LT blocks. They are ideally suitable for fabricating inlays and onlays because of their exceptional chameleon effect. The high translucency of the material and its life-like fluorescence allow the restoration to blend in seamlessly with the surrounding dentition.



Delivery forms

IPS Empress CAD for CEREC® and inLab HT		
Refill HT Blocks – Chromascop	5 each	See p. 3#
(4 sizes / 3 Chromascop shades)		
Refill HT Blocks – A-D	5 each	See p. 3#
(4 sizes / 9 A-D shades)		

IPS Empress® CAD LT

The IPS Empress CAD LT blocks are characterized by their high level of brightness and true-to-nature chroma. Therefore, they are particularly suitable for fabricating larger restorations. The specially adjusted brightness of the material prevents "greying" of full and partial restorations. The blocks demonstrate a natural-looking fluorescence, which matches the different indications. Therefore, the restorations seamlessly blend into the remaining dentition under different light conditions.



Delivery forms

IPS Empress® CAD for CEREC® and inLab® LT		
Refill LT Blocks – Chromascop	5 each	See p. 3#
(4 sizes / 3 Chromascop shades)		
Refill LT Blocks – A-D	5 each	See p. 3#
(4 sizes / 9 A-D shades)		
Refill LT Blocks – Bleach	5 each	See p. 3#
(3 sizes / 4 Bleach shades)		

IPS Empress® CAD Multi

The polychromatic IPS Empress CAD Multi blocks offer a smooth colour transition between the dentin and incisal areas. They produce highly esthetic and natural-looking results, even without characterization. IPS Empress CAD Multi blocks feature a high level of chroma and lifelike opacity in the cervical areas and the desired level of translucency in the incisal region.



Delivery forms

IPS Empress CAD for CEREC and inLab Multi

Refill Multi Blocks – A–D	5 each	See p. 3#
(3 sizes / 5 A–D shades)		
Refill Multi Blocks – Bleach	5 each	See p. 3#
(3 sizes / 2 Bleach shades)		

IPS Empress® CAD Probe Blocks

Three IPS Empress CAD blocks in the shade A2 (HT, LT, Multi).



Delivery forms

IPS Empress CAD for CEREC® and inLab® Probe Blocks 603417

IPS Empress CAD for CEREC and inLab HT A2 / I 12	1x
IPS Empress CAD for CEREC and inLab LT A2 / C 14	1x
IPS Empress CAD for CEREC and inLab Multi A2 / C 14 L	1x

OVERVIEW OF BLOCKS

HT High Translucency	A-D								
	A1	A2	A3	A3.5	B1	B2	B3	C2	D3
LT Low Translucency									
Multi									
V 12	● 602496 ● 602543	● 602497 ● 602544	● 602498 ● 602545						
I 8	● 602500	● 602501	● 602502	● 602503	● 602504	● 602505	● 602506	● 602507	● 602508
I 10	● 602510 ● 602547	● 602511 ● 602548	● 602512 ● 602549	● 602513 ● 602550	● 602514 ● 602551	● 602515 ● 602552	● 602516 ● 602553	● 602517 ● 602554	● 602518 ● 602555
I 12	● 602520 ● 602557 ● 602592	● 602521 ● 602558 ● 602593	● 602522 ● 602559 ● 602594	● 602523 ● 602560 ● 602595	● 602524 ● 602561 ● 602596	● 602525	● 602526	● 602527	● 602528
C 14	● 602567 ● 602598	● 602568 ● 602599	● 602569 ● 602600	● 602570 ● 602601	● 602571 ● 602602	● 602572	● 602573	● 602574	● 602575
C 14 L	● 602604	● 602605	● 602606	● 602607	● 602608				
HT High Translucency	Chromascop			Bleach					
LT Low Translucency									
Multi	100	200	300		BL1	BL2	BL3	BL4	
V 12	● 602482 ● 602529								
I 8	● 602484	● 602485	● 602486						
I 10	● 602488 ● 602531	● 602489 ● 602532	● 602490 ● 602533			● 602577	● 602578	● 602579	● 602580
I 12	● 602492 ● 602535	● 602493 ● 602536	● 602494 ● 602537			● 602582 ● 607681	● 602583	● 602584 ● 607682	● 602585
C 14	● 602539	● 602540	● 602541			● 602587 ● 607683	● 602588	● 602589 ● 607684	● 602590
C 14 L					● 607672		● 607673		

IPS Empress® Universal Shade/ Stains Kit

The IPS Empress Universal Shade/Stains Kits (Chromascop and A–D) contain a selection of the most popular Dentin and Intensive Stains. These stains can be used to apply surface staining and characterization. The Kit also contains a smooth and fine-grained glazing paste for final glazing of the IPS Empress restorations.



Delivery forms

IPS Empress Universal Shade/Stains Kit 602468

IPS Empress Universal Shade Shades: 110/120, 130, 140/210, 220/230, 410/420	1 x 3 g each
IPS Empress Universal Shade Incisal Shades: I1, I2	1 x 3 g each
IPS Empress Universal Stains Shades: white, orange, mahogany, khaki, maroon	1 x 1 g each
IPS Empress Universal Glaze	3 g
IPS Empress Universal Glaze and Stain Liquid	1 x 15 ml
Tweezers, Modelling Brush 00	1x each

IPS Empress Universal Shade/Stains Kit A–D 602469

IPS Empress Universal Shade A1, A2/A3/A3.5, B1, B2/B3/B4, C1/C2, D2/D3	1 x 3 g each
IPS Empress Universal Shade Incisal I1, I2	1 x 3 g each
IPS Empress Universal Stains white, orange, mahogany, khaki, maroon	1 x 1 g each
IPS Empress Universal Glaze	1 x 3 g
IPS Empress Universal Glaze and Stain Liquid	1 x 15 ml
Tweezers, Modelling Brush 00	1x each

IPS Empress® Universal Shades

The IPS Empress Universal Shades are available in 15 Chromascop and 9 A-D shades. They are used for the exact reproduction of the Chromascop and A-D shades. Two IPS Empress Universal Shades Incisal are available for imitating the incisal edge.



Delivery forms

IPS Empress Universal Shade Chromascop 1 x 3 g each

110 / 120	562457
130	562462
140 / 210	562458
220 / 230	562459
240	562463
310	562464
320	562465
330	562466
340	562467
410 / 420	562460
430 / 440	562461
510	562468
520	562469
530	562470
540	562471

IPS Empress Universal Shade A–D 1 x 3 g each

A1	562472
A2 / A3 / A3.5	562473
A4	562474
B1	562475
B2 / B3 / B4	562476
C1 / C2	562477
C3 / C4	562478
D2 / D3	562479
D4	562480

IPS Empress Universal Shade Incisal 1 x 3 g each

I1	602471
I2	602472

IPS Empress® Universal Stains

The intensive stains are available in 14 different shades. They are used to imitate natural characteristics. With the three complementary shades basic blue, basic red, and basic yellow, the shades may be individually adjusted.



Delivery forms

IPS Empress Universal Stains	1 x 1 g each	
white		562481
black		562482
mahogany		562483
khaki		562484
orange		562485
grey		562486
vanilla		562487
crackliner		562488
olive		562489
yellow		562490
basic blue		562491
basic yellow		562492
basic red		562493
maroon		562494

IPS Empress® Universal Glaze

Glaze paste to glaze all IPS Empress CAD restorations. The liquid is used to adjust the consistency of: IPS Empress Universal Shade, IPS Empress Universal Stains and IPS Empress Universal Glaze.



Delivery forms

IPS Empress Universal Glaze	1 x 3 g	562495
IPS Empress Universal Glaze and Stain Liquid	1 x 15 ml	562496

IPS Empress® Universal Glaze Spray

For the easy and fast glazing of fully anatomical (characterized) IPS Empress restorations (Esthetic and CAD). The Glaze Spray is also used to glaze veneered restorations (IPS Empress Esthetic Veneer).



Delivery form

IPS Empress Universal Glaze Spray	1 x 120 ml [270 ml]	609432AN
-----------------------------------	---------------------	----------

For the cut-back technique (incisal layering of IPS Empress CAD anterior crowns / veneers), the IPS Empress Esthetic layering material is available. It covers various layering materials and liquids. (See Product Catalog technical for detailed product description).

IPS Empress® CAD HT/LT A–D/BL Material Shade Guide

To prevent cross-contamination in the oral cavity, the individual tabs and the entire shade guide are autoclavable.
This material shade guide shows the A-D and Bleach shades in which the IPS Empress CAD materials are available.



Delivery forms

IPS Empress CAD HT/LT A–D/BL Material Shade Guide	603418
--	---------------

IPS Empress® Packaging



Delivery forms

IPS Empress Material Box small	(55 mm)	602990
---------------------------------------	----------------	---------------

Inserts

IPS Empress CAD Block Insert	602988
IPS Empress Shade/Stain Insert	609450



IPS e.max® CAD

IPS e.max CAD is a high-strength lithium disilicate glass-ceramic (LS₂) for the CAD/CAM technique directly in the dental office (chairside) or the laboratory (labside).

The IPS e.max CAD blocks for chairside processing are available in 16 A-D and four modern Bleach BL shades. They are available in two

levels of translucency and two sizes. There are also an even more opaque blocks for the fabrication of frameworks (layering technique) in the laboratory.

The IPS e.max CAD blocks with high translucency (HT) are used for the milling of minimally-invasive, fully anatomical restorations, such as inlays, onlays, veneers. For partial crowns and crowns, the less translucent (LT) blocks are used.

The restorations are directly milled from the blue blocks. During a quick combined crystallization/glaze firing cycle, which supersedes polishing, the restorations acquire their high strength (360 MPa) and the desired esthetic properties (tooth shade, translucency, brightness). The restorations can be additionally individualized using the Stain materials.

Finally, the restorations are seated. As an alternative to being placed using the adhesive cementation technique, crowns may also be cemented self-adhesively or conventionally.



Preparation



Construction



Milling process



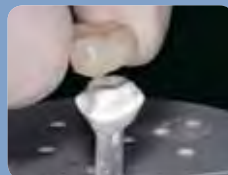
Try-in



Application of Stains and/or Glaze



Crystallization



Completed restoration



Conventionally cemented IPS e.max CAD crown

IPS e.max® CAD for CEREC® Basic Kit

The IPS e.max CAD for CEREC Basic Kit A-D contains blocks and the accessories necessary for chairside processing with the CEREC System. Logically following the treatment procedure, the 4 drawers are arranged into the fields "Preparation/Scanning", "Milling", "Staining/Glazing" and "Incorporation", in order to facilitate the handling in the dental office.

The Basic Kit is supplied in the Material Box and can be supplemented with any other IPS e.max or IPS Empress Kits.



Delivery forms

IPS e.max CAD for CEREC Basic Kit	626375
IPS e.max CAD for CEREC and inLab Blocks C14, Shades: LT A1, LT A2	2 x 5 blocks
IPS e.max CAD for CEREC and inLab Blocks C14, Shades: HT A1, HT A2	2 x 5 blocks
IPS e.max CAD Crystall./Shade, Shades: 1, 2, I1, I2	4 x 3 g
IPS e.max CAD Crystall./Stains, Shades: white, sunset, khaki, mahogany	4 x 1 g
IPS e.max CAD Crystall./Glaze Paste	1 x 3 g
IPS e.max CAD Crystall./Glaze Spray	1 x 120 ml (270 ml)
IPS e.max CAD Crystall./Glaze Liquid	1 x 15 ml
IPS e.max CAD Crystall./Add-On	1 x 5 g
IPS e.max CAD Crystall./Add-On Liquid	1 x 15 ml
IPS Contrast Spray Chairside blue-lemon	1 x 50 ml
Virtual CADbite	1 x 50 ml
IPS e.max CAD Crystallization Tray	1x
IPS Object Fix Flow	1 x 10 ml
IPS Object Fix Putty	1 x 10 g
Multilink Automix	1 x 5 ml
Multilink Primer A/B	1 x 3 g
Monobond Plus	1 x 5 g
IPS Ceramic Etching Gel Kit	1x
var. accessories	

IPS e.max® CAD for CEREC® Starter Kit A–D

The IPS e.max CAD for CEREC Starter Kit A-D contains blocks and the accessories necessary for chairside processing with the CEREC System. The Starter Kit is supplied in the Material Box and can be supplemented with any other IPS e.max or IPS Empress Kits.



Delivery forms

IPS e.max CAD for CEREC Starter Kit	630538
IPS e.max CAD for CEREC and inLab Blocks C14, Shades: LT A2	1 x 5 blocks
IPS e.max CAD for CEREC and inLab Blocks C14, Shades: HT A2	1 x 5 blocks
IPS e.max CAD Crystall./Shade, Shades: 1, 2, I1,	3 x 3 g
IPS e.max CAD Crystall./Stains, Shades: white, sunset, mahogany	3 x 1 g
IPS e.max CAD Crystall./Glaze Paste	1 x 3 g
IPS e.max CAD Crystall./Glaze Spray	1 x 120 ml (270 ml)
IPS e.max CAD Crystall./Glaze Liquid	1 x 15 ml
IPS e.max CAD Crystall./Add-On Incisal	1 x 5 g
IPS e.max CAD Crystall./Add-On Liquid	1 x 15 ml
IPS e.max CAD Crystallization Tray	1x
IPS Object Fix Flow	1 x 10 ml
IPS Object Fix Putty	1 x 10 g
IPS Ceramic Etching Gel Kit var. accessories	1x

All-Ceramic Preparation Guide

The three-dimensional preparation guide from Ivoclar Vivadent visualizes the proper preparation of teeth for all-ceramic restorations. The model furthermore shows the minimum preparation requirements and the indications of IPS Empress and IPS e.max restorations. The model comes with an illustrated booklet which features the preparation recommendations. The booklet is also available separately.



Delivery forms

All-Ceramic Preparation Guide Edition II (model)	630548
All-Ceramic Recommendations for Preparation (D/E)	631797

IPS e.max® CAD for CEREC® and inLab® LT / I 12 and C 14 Blocks



Delivery forms

IPS e.max CAD for CEREC and inLab LT I 12		1 x 5 blocks
LT BL1		605338
LT BL2		605339
LT BL3		605340
LT BL4		605341
LT A1		605318
LT A2		605319
LT A3		605320
LT A3.5		605321
LT A4		626377
LT B1		605322
LT B2		605323
LT B3		605324
LT B4		626378
LT C1		626379
LT C2		605325
LT C3		626380
LT C4		626381
LT D2		626382
LT D3		605326
LT D4		626383
IPS e.max CAD for CEREC and inLab LT C 14		1 x 5 blocks
LT BL1		605343
LT BL2		605344
LT BL3		605345
LT BL4		605346
LT A1		605328
LT A2		605329
LT A3		605330
LT A3.5		605331
LT A4		626384
LT B1		605332
LT B2		605333
LT B3		605334
LT B4		626385
LT C1		626386
LT C2		605335
LT C3		626387
LT C4		626388
LT D2		626389
LT D3		605336
LT D4		626390

IPS e.max® CAD for CEREC® and inLab® HT / I 12 and C 14 Blocks



Delivery forms

IPS e.max CAD for CEREC and inLab HT I 12	1 x 5 blocks	
HT BL1		626423
HT BL2		626424
HT BL3		626425
HT BL4		626426
HT A1		626391
HT A2		626392
HT A3		626393
HT A3.5		626394
HT A4		624395
HT B1		626396
HT B2		626397
HT B3		626398
HT B4		626399
HT C1		626400
HT C2		626401
HT C3		626402
HT C4		626403
HT D2		626404
HT D3		626405
HT D4		626406

IPS e.max CAD for CEREC and inLab HT C 14	1 x 5 blocks	
HT BL1		626427
HT BL2		626428
HT BL3		626429
HT BL4		626430
HT A1		626407
HT A2		626408
HT A3		626409
HT A3.5		626410
HT A4		626411
HT B1		626412
HT B2		626413
HT B3		626414
HT B4		626415
HT C1		626416
HT C2		626417
HT C3		626418
HT C4		626419
HT D2		626420
HT D3		626421
HT D4		626422

IPS e.max® CAD for CEREC® and inLab® Impulse / C 14 Blocks



Delivery forms

IPS e.max CAD for CEREC and inLab Impulse C 14	1 x 5 blocks	
Starter Blocks		637798
Value 1		637795
Value 2		637796
Value 3		637797
Opal 1		637793
Opal 2		637794

IPS e.max® CAD Crystall./Shades

Dentin stains in paste form that are optimally coordinated with IPS e.max CAD. They may be applied both on "blue" or crystallized restorations.



Delivery forms

IPS e.max CAD Crystall./Shades	1 x 3 g each	
0		605348
1		605349
2		605350
3		605351
4		605352
l1		605353
l2		605354

IPS e.max® CAD Crystall./Stains

Intensive stains in paste form that are optimally coordinated for use with IPS e.max CAD. They may be applied both on "blue" or crystallized restorations.



Delivery forms

IPS e.max CAD Crystall./Stains	1 x 1 g each	
white		605356
creme		605357
sunset		605358
copper		605359
olive		605360
khaki		605361
mahogany		605362

IPS e.max® CAD Crystall./Glaze Paste

Special glaze paste to be used with fully anatomical IPS e.max CAD restorations. It may be applied either prior to crystallization on the "blue" crown or in the subsequent firing cycle.



Delivery form

IPS e.max CAD Crystall./Glaze Paste	1 x 3 g	605363
-------------------------------------	---------	--------

IPS e.max® CAD Crystall./ Glaze Spray

Glaze spray to be used with fully anatomical IPS e.max CAD restorations. It is sprayed on the restorations once IPS e.max CAD Crystall./Shades and Stains have been applied. Subsequently, the restorations are fired in a combined crystallization and glaze firing cycle.



Delivery form

IPS e.max CAD Crystall./Glaze Spray	120 ml (270 ml)	605364
-------------------------------------	-----------------	--------

IPS e.max® CAD Crystall./ Glaze Liquid

Special liquid to dilute IPS e.max CAD Crystall./Shades and Stains and the IPS e.max CAD Crystall./Glaze Paste.



Delivery form

IPS e.max CAD Crystall./Glaze Liquid	1 x 15 ml	605366
--------------------------------------	-----------	--------

IPS e.max® CAD Crystall./ Add-On, Liquid

For adjustments, such as in incisal/occlusal or dentin areas. These adjustments can be made directly with the crystallization firing or in a subsequent corrective firing cycle.



Delivery form

IPS e.max CAD Crystall./Add-On Dentin	1 x 5 g	635549
IPS e.max CAD Crystall./Add-On Incisal	1 x 5 g	605365
IPS e.max CAD Crystall./Add-On Liquid allround	1 x 15 ml	605569

IPS e.max® CAD Crystallization Tray

Silicon nitride firing tray for the crystallization of IPS e.max CAD restorations. The crystallization pins supplied are required for the crystallization of IPS e.max CAD LT restorations.



Delivery form

IPS e.max CAD Crystallization Tray

605367

IPS e.max® Press / IPS e.max® CAD Shade Guides

The shade guides for press and CAD materials are supporting tools for determining the shade. To prevent cross-contamination in the oral cavity, the individual tabs and the entire shade guide are autoclavable. The shade tabs show the final shade, i.e. after pressing or crystallization. They thus help to check the shade, and they can also be used to check the quality of the crystallization process of IPS e.max CAD restorations..



Delivery form

IPS e.max Press/CAD LT Shade Guide

1x

605523

IPS e.max Press/CAD HT Shade Guide

1x

613998

IPS® Ceramic Etching Gel

The IPS Ceramic Etching Gel is used for the creation of retentive bonding surfaces on all-ceramic restorations to prepare for cementation. It enhances the bonding effect between the composite cement and the ceramic bonding surface.



Delivery forms

IPS Ceramic Etching Gel Kit		531550
IPS Ceramic Etching Gel	1 x 5 ml	
Neutralizing Powder	1 x 30 g	

Refill

IPS Ceramic Etching Gel, red	1 x 5 ml	531548
Neutralizing Powder	1 x 30 g	531549

Tweezers

Facilitate handling during staining and glazing.



Delivery form

Tweezers	1x	554069
-----------------	----	---------------

IPS® Contrast Spray Chairside

IPS Contrast Spray Chairside is used to achieve optimum recordings for CAD/CAM restorations. It balances out the different optical properties of dentin and enamel and thus permits detailed representation of the edges. The IPS Contrast Spray Chairside has been especially developed for intraoral use.



Delivery forms

IPS Contrast Spray Chairside crème-lemon			633159
5 single-use nozzles, 2 spray heads	1 x 50 ml (75 ml)		

IPS Contrast Spray Chairside blue-lemon			633160
5 single-use nozzles, 2 spray heads	1 x 50 ml (75 ml)		

Refill Cannulas	100x	614437
------------------------	------	---------------

IPS® Object Fix Flow IPS® Object Putty

Auxiliary firing pastes with different levels of viscosity to support all-ceramic restorations (particularly IPS e.max CAD) during firing and crystallization. The pastes are used to stabilize and secure the restorations on the silicon nitride support pins or directly on the silicon nitride firing tray. The pastes are easy to apply and remove after the firing procedure.



Delivery forms

IPS Object Fix Flow	1 x 10 ml	605525
IPS Object Fix Putty	1 x 10 g	605526

IPS® Natural Die Material

In order to facilitate the reproduction of the desired tooth shade, the IPS Natural Die Material Shade Guide is used to determine the shade of the prepared tooth. The shade of the prepared tooth provides the basis for selecting the respective block.

IPS Natural Die Material is available in 9 shades, including:

- 1 shade to imitate bleached preparations (ND1)
- 1 shade to imitate secondary dentin that demonstrates an intensive shade (ND6)
- 1 shade to imitate severely discoloured / devitalized preparations (ND9)



Delivery forms

IPS Natural Die Material Kit		597078
IPS Natural Die Material Accessories	9 x 8 g	
Refill IPS Natural Die Material	8 g each	
ND1		597080
ND2		597081
ND3		597082
ND4		597083
ND5		597084
ND6		597085
ND7		597086
ND8		597087
ND9		597088
IPS Natural Die Material Separator	1 x 20 ml	597089
IPS Die Holders	10x	554028
IPS Condensers	10x	554030

IPS® Natural Die Material Shade Guide

The shade guide enables optimum selection of the die shade after preparation. To prevent cross-contamination in the oral cavity, the individual tabs and the entire shade guide are autoclavable.



Delivery form

IPS Natural Die Material Shade Guide	1x	597090
---	-----------	---------------

Telio® CS C&B

Self-curing composite material in paste form for the fabrication of temporary restorations.



Indications:

Fabrication of temporary restorations

- Crowns and bridges
- Inlays and onlays
- Core build-ups in combination with temporary posts
- Veneers

Advantages:

- High fracture strength and optimum wear period
- Accuracy of fit and tension-free results
- Protection of the dental pulp and tissues
- Easy handling due to automix double-barrel cartridge

Shades:

Bleach BL3, A1, A2, A3, A3.5

Delivery forms

Telio CS C&B Starter Kit A2 628244

Telio CS C&B A2	1 x 78 g
Mixing Tips	10 x
Telio CS Link Transparent	1 x 6 g
Mixing Tips	5 x
Telio CS Desensitizer	1 x 5 g
Application Brushes	50 x
var. accessories	

Refill Telio CS C&B 1 x 78 g

Double-barrel cartridge, 10:1, var. accessories	
Bleach BL3	628249
A1	628245
A2	628246
A3	628247
A3.5	628248

Refill Dispenser 1x 561381

Refill Mixing Tips 50x 628157

Telio® CS Link

Dual-curing, translucent, temporary composite cement for the esthetic and provisional cementation of temporary restorations.



Indications:

Temporary cementation of provisionals

- Crowns and bridges
- Inlays and onlays
- Veneers

Advantages:

- Eugenol-free
- Dual-curing
- High esthetics due to two translucent shades
- Ideal retention behaviour
- Easy handling due to automix double-push syringe

Shades:

A3 and Transparent

Delivery forms

Telio CS C&B Starter Kit A2		628244
Telio CS C&B A2	1 x 78 g	
Mixing Tips	10 x	
Telio CS Link Transparent	1 x 6 g	
Mixing Tips	5 x	
Telio CS Desensitizer	1 x 5 g	
Application Brushes	50 x	
var. accessories		
Refill Telio CS Link	2 x 6 g	
Double-push syringe, 1:1, var. accessories		
A3		627912
Transparent		627914
Refill Mixing Tips	10x	627948

Telio® CS Cem Implant

Self-curing resin cement with light-curing option designed for the esthetic, reversible/semi-permanent cementation of restorations on implant abutments.



Indication:

- reversible/semi-permanent cementation of implant superstructures on abutments made of titanium, gold and zirconium oxide.

Advantages:

- reversible/semi-permanent cementation of temporary and permanent restorations
- Wear period: 6 months and more

Delivery forms

Refill Telio CS Cem Implant	1 x 6 g	
transparent		637510
opaque		637509
Telio CS Cem Implant Starter Pack	1 x 1,5 g	637508

Telio® CS Desensitizer

A clear solution for application onto dentin for reducing and preventing dentinal hypersensitivity and post-operative sensitivity.



Indications:

Prevention and reduction of dentinal hypersensitivity and post-operative sensitivity for the following fields of application:

- Temporary restorations
- Luting / cementation of indirect restorations
- Direct restorative treatment
- Treatment of sensitive tooth necks

Advantages:

- Total working time of 10 seconds. No light-curing required
- License for treatment planning and material selection. No interaction with the materials used in the further treatment steps.
- Reduction of dentinal hypersensitivity and post-operative sensitivities
- Cleaning of cut dentin surfaces

Delivery forms

Telio CS C&B Starter Kit A2 628244

Telio CS C&B A2	1 x 78 g
Mixing Tips	10 x
Telio CS Link Transparent	1 x 6 g
Mixing Tips	5 x
Telio CS Desensitizer	1 x 5 g
Application Brushes	50 x
var. accessories	

Refill Telio CS Desensitizer

Refill Telio CS Desensitizer Bottle	1 x 5 g	627911
Refill Telio CS Desensitizer Single Dose	50 x 0.1 g	627916

Telio® CAD for CEREC® Starter Kit

The Telio CAD Starter Kit contains blocks, cementation material, a desensitizer and additional accessories for chairside application with the CEREC system.



Delivery forms

Telio CAD for CEREC Starter Kit A2	631697
Telio CAD for CEREC and inLab Blocks, B40 L Shades: LT A1	2x
Telio CAD for CEREC and inLab Blocks, B40 L Shades: LT A2, LT A3	3x each
Telio CS Link Transparent	1 x 6 g
Telio CS Desensitizer	1 x 5 g
OptraPol Test Pack var. accessories	

Telio® CAD for CEREC® and inLab® LT / B 40 L Blocks



Delivery forms

Telio CAD for CEREC and inLab LT B 40 L	1 x 3 blocks
LT BL3	627718
LT A1	627719
LT A2	627720
LT A3	627721
LT A3.5	627722
LT B1	627723
Telio CAD for CEREC and inLab LT B 40 L	1 x 9 blocks
LT BL3	627726
LT A1	627727
LT A2	627728
LT A3	627729
LT A3.5	627730
LT B1	627731

Telio® CAD for CEREC® and inLab® LT / B 55 Blocks



Delivery forms

Telio CAD for CEREC and inLab LT B 55	1 x 1 block
LT BL3	627818
LT A1	627819
LT A2	627820
LT A3	627821
LT A3.5	627822
LT B1	627823
Telio CAD for CEREC and inLab LT B 40 L	1 x 3 blocks
LT BL3	627824
LT A1	627825
LT A2	627826
LT A3	627827
LT A3.5	627828
LT B1	627829

Telio® CS Inlay

Telio CS Inlay is a light-curing, single-component temporary restorative material.



Indications:

- Deep inlay preparations with parallel walls
- Reversible obturation of screw access holes in implant superstructures
- Relining of prefabricated temporary crowns made of polycarbonate or methacrylate

Advantages:

- Seals tooth cavities effectively and shows no discolouration
- Demonstrates low polymerization shrinkage
- Contains both a cariostatic and an antimicrobial agent
- Quick and easy application, removal in one piece
- Light-curing, single-component material
- Bonds to the tooth but does not stick to the instrument
- No additional temporary cement required
- Available in two different shades and presentations (syringes and Cavifils)

Shades:

Transparent and Universal

Telio® CS Onlay

Telio CS Onlay is a light-curing, single-component temporary restorative material.



Indications:

- Wide, shallow cavities with few retentive areas, such as onlay preparations

Advantages:

- Seals tooth cavities effectively and shows no discolouration
- Demonstrates low polymerization shrinkage
- Contains both a cariostatic and an antimicrobial agent
- Quick and easy application, removal in one piece
- Light-curing, single-component material
- Bonds to the tooth but does not stick to the instrument
- No additional temporary cement required
- Available in two different shades and presentations (syringes and Cavifils)

Shades:

Transparent and Universal

Delivery forms

Refill Telio CS Inlay Syringe	3 x 2.5 g	
Universal		635332
Transparent		635335

Refill Telio CS Inlay Cavifil	30 x 0.25 g	
Universal		635333
Transparent		635334

Refill Telio CS Onlay Syringe	3 x 2.5 g	
Universal		635339
Transparent		635338

Refill Telio CS Onlay Cavifil	30 x 0.25 g	
Universal		635337
Transparent		635336

Variolink® II

Dual-curing (light- and self-curing) luting composite.



Teeth 45 and 46:
IPS Empress all-ceramic
inlays and Variolink II
Tooth 47: Gold inlay, Tooth
44: Tetric Ceram (Courtesy
Dr. N. Krämer, University of
Erlangen, Germany)

Indications:

- Adhesive cementation of glass-ceramic, lithium disilicate, and composite restorations (inlays, onlays, crowns, and veneers, as well as metal-free bridges)

Advantages:

- Available in 6 shades and two degrees of viscosity
- Two comprehensive systems with all products necessary for adhesive cementation
- Very high radiopacity
- Fluoride release
- Reduced sensitivity to light
- High abrasion resistance

Shades:

Transparent, white (110/A1), yellow/universal (210/A3), brown (340/A4), white opaque, Bleach XL.

Catalyst is available in two viscosities and shades.

Delivery forms

Professional Set / Syntac

628322

Base Bleach XL, Base White, Base White opaque, Base Yellow, Base Brown, Base Transparent, Catalyst Yellow/High, Catalyst Yellow/Low, Catalyst Transparent/High, Catalyst Transparent/Low, Heliobond, Syntac Adhesive, Syntac Primer, Monobond Plus, Total Etch, Liquid Strip, var. accessories

Esthetic Cementation System / ExcITE F DSC

628319

Base Bleach XL, Base White, Base White opaque, Base Yellow, Base Brown, Base Transparent, Catalyst Yellow/High, Catalyst Yellow/Low, Catalyst Transparent/High, Catalyst Transparent/Low, ExcITE F DSC Single Dose Regular, Monobond Plus, Total Etch, Liquid Strip, var. accessories

Assortment

10 x 2.5 g

558947

Base Bleach XL, Base White, Base White opaque, Base Yellow, Base Brown, Base Transparent, Catalyst Yellow/High, Catalyst Yellow/Low, Catalyst Transparent/High, Catalyst Transparent/Low, var. accessories

Double-push syringe

1 x 6 g

558525

Yellow/Universal

Intro Pack Variolink II / ExcITE F DSC

628323

Base Transparent, Catalyst Yellow/High, ExcITE F DSC Single Dose Regular, Monobond Plus, Total Etch, Liquid Strip, var. accessories

Variolink II Base

1 x 2.5 g

Bleach XL-010

558949

Transparent

558950

White 110/A1

558951

Yellow 210/A3

558952

Brown 340/A4

558953

White opaque

558954

Variolink II Catalyst

1 x 2.5 g

Yellow/High

558955

Yellow/Low

558956

Transparent/High

558957

Transparent/Low

558958

Variolink® II Try-In

Water-soluble, glycerine-based try-in paste for lab-fabricated ceramic and composite restorations. Available in the six Variolink II shades.



Indications:

- Simulating the shades of Variolink II luting composite
- Protecting the etching pattern of lab-fabricated all-ceramic restorations

Shades:

Transparent, white (110/A1), yellow/universal (210/A3), brown (340/A4), white opaque, Bleach XL

Delivery forms

Assortment	6 x 2.5 g	558959
Transparent, Bleach XL, White, White opaque, Yellow, Brown		
Refill	1 x 2.5 g	
Transparent		548793
White 110/A1		548794
White opaque		548795
Yellow 210/A3		548796
Brown 340/A4		548797
Bleach XL-010		558960

Variolink® Ultra

High-viscosity, dual-curing (light- and self-curing) luting composite.



Indications:

- Adhesive luting of ceramic, composite and Ceromer/FRC restorations in conjunction with the ultrasonic insertion technique

Advantages:

- Excellent radiopacity
- Easy removal of excess due to the material's high viscosity
- Fluoride release
- High wear resistance

Shade:

Yellow/universal (210/A3)

Delivery forms

Refill	2 x 3 g	538319
Base yellow/universal, Catalyst yellow/universal		

Variolink® Veneer

Light-curing luting composite in seven „Value“ shades with very high translucency and optimum shade stability.



Indications:

- Adhesive cementation of translucent all-ceramic restorations with a thickness of < 2.0 mm (veneers, inlays, onlays)

Advantages:

- High shade stability due to a specific amine-reduced formulation
- Available in 7 shades with very high translucency
- Easy removal of excess
- Low wear, good polishing properties
- High bond strength

Shades:

High Value +3, High Value +2, High Value +1, Medium Value 0, Low Value –1, Low Value –2, Low Value –3

Delivery forms

Assortment

Variolink Veneer syringes in 7 shades	7 x 1.5 ml
Variolink Veneer Try-In syringes in 7 shades	7 x 1.5 ml
Monobond Plus	1 x 5 g
Liquid Strip	1 x 2,5 g
Total Etch	1 x 2 g
var. accessories	

Assortment Syntac

628320

Syntac Primer, Syntac Adhesive	3 g each
Heliobond	1 x 6 g

Assortment Excite F

628321

Excite F Single Dose	12 x 0.1 g
----------------------	------------

Refill Variolink Veneer Syringe

1 x 1.5 ml

High Value +1	591425
High Value +2	591424
High Value +3	591423
Low Value –1	591427
Low Value –2	591428
Low Value –3	591429
Medium Value 0	591426

Refill Try-In Variolink Veneer Try-In Syringe

1 x 1.5 ml

High Value +1	591432
High Value +2	591431
High Value +3	591430
Low Value –1	591434
Low Value –2	591435
Low Value –3	591436
Medium Value 0	591433

Dual® Cement

Tooth-coloured, dual-curing (light- and self-curing) luting composite.



Indications:

- Adhesive cementation of composite and glass-ceramic restorations

Advantages:

- Highly translucent shade
- Long-term clinical experience
- Continuous fluoride release
- Excellent radiopacity
- Excellent wear resistance

Delivery forms

Refill	2 x 3 g	533209
Double-push syringe	1 x 5 g	558522

Monobond® Plus

Universal, single-component bonding agent for **all** indirect restorative materials.



Indications:

Universal, single-component bonding agent for all indirect restorative materials (glass and oxide ceramics, metal, composite, fibre-reinforced composite). It generates a sound bond between the restoration and the cementation material.

Delivery form

Refill	1 x 5 g	626221
---------------	----------------	---------------

Liquid Strip

Glycerine gel to prevent the oxygen-inhibited layer of composites with composite or ceramic restorations.



Indications:

- Try-in paste
- Preventing an inhibited layer with composites
- Protecting the etching pattern of lab-fabricated all-ceramic restorations

Delivery form

Refill	1 x 2.5 g	532505
---------------	------------------	---------------

Ivoclean

Universal cleaning paste especially designed for removing contaminants, in particular those containing proteins, from restoration surfaces after intraoral try-in.



Indication:

- Extraoral cleaning of pre-treated ceramic and metal restoration surfaces

Delivery form

Refill	1 x 5 g	637568
---------------	----------------	---------------



A strong bond for all cementation cases

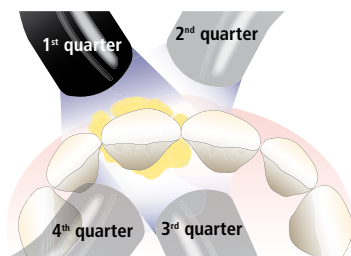
Multilink® Automix – The self-curing luting composite with light-curing option for the adhesive luting of indirect restorations made of metal, metal-ceramic, silicate ceramic, oxide ceramic and composite.

- Strong hold on all surfaces
- Universal application
- Uncomplicated use



Multilink® Automix

The universal luting composite Multilink in the automix syringe is characterized by a wide range of indications, excellent material properties and its time-saving direct application.



Indications:

Cementation of indirect restorations (inlays, onlays, crowns, bridges, endodontic posts) made of:

- Metal and metal-ceramic (PFM)
- All-ceramics (silicate)
- Reinforced all-ceramics (zirconium and aluminium oxide)
- Composites and fibre-reinforced composites (FRC)

Advantages:

- Time-saving direct application (no manual mixing, no activation of capsules, no additional application aids required, accurate application, constant mixing ratio)
- High bond strength on all surfaces
- Easy removal of excess material
- Composite matrix based on Variolink II, the leading luting composite worldwide
- Self-curing with light curing option
- Self-etching primer

Shades:

Opaque, yellow, transparent

Delivery forms

System Pack

Multilink Automix Syringe	1 x 9 g	
Mixing Tips	15x	
Multilink Primer A/B	2 x 3 g	
Monobond Plus	1 x 5 g	
Applicators (large and small)	25 each	
Mixing Pad	1x	
Mixing Plate (for Multilink Primer A/B)	1x	
var. accessories		
Transparent		627471
Yellow		627473
Opaque		627472

Refill

Multilink Automix Syringe	1 x 9 g	
Mixing Tips	15x	
var. accessories		
Transparent		615216
Yellow		615217
Opaque		615218

Starter Pack

Multilink Automix Syringe	1 x 2.5 g	
Mixing Tips	4x	
Multilink Primer A/B	2 x 1 g	
Monobond Plus	1 x 1 g	
Applicators (large and small)	25 each	
Mixing Pad	1x	
Mixing Plate (for Multilink Primer A/B)	1x	
var. accessories		
Transparent		627571

Refill Multilink Primer A+B	2 x 3 g	576825
Refill Multilink Primer A	1 x 3 g	613626
Refill Multilink Primer B	1 x 3 g	613627
Refill Monobond Plus	1 x 5 g	626221
Refill Mixing Tips	15x	592225
Refill Applicators	2x 25	592435

Applicators (25 large, 25 small)

Multilink Implant®

Self-curing luting composite with light-curing option for the permanent cementation of implant-retained restorations.



Indication:

Adhesive cementation of indirect restorations made of metal, metal-ceramic, glass-ceramic and oxide-ceramic on implant abutments.

Advantages:

- Strong hold when used in combination with Monobond Plus
- Long-term adhesion due to its very low solubility in water and its high mechanical strength
- Optimum removal of excess material
- Appropriate and short setting time
- Shade range adjusted to the indication

Shades:

Transparent, MO 0, MO 1

Delivery forms

System Pack

Multilink Implant Automix Syringe	1 x 9 g	
Mixing Tips	15x	
Monobond Plus	1 x 5 g	
Brush holder purple	1x	
Brushes soft	50x	
var. accessories		
Transparent		627575
MO 0		627576
MO 1		627577

Refill

Multilink Implant Automix Syringe	1 x 9 g	
Mixing Tips	15x	
var. accessories		
Transparent		627580
MO 0		627581
MO 1		627582

Starter Pack

Multilink Implant Automix Syringe	1 x 2.5 g	
Mixing Tips	4x	
Monobond Plus	1 x 1 g	
Brush holder purple	1x	
Brushes soft	50x	
var. accessories		
Transparent		627578
MO 0		627579

Refill Monobond Plus	1 x 5 g	626221
----------------------	---------	--------

Refill Mixing Tips	15x	592225
--------------------	-----	--------



For IPS e.max

Shift up with
SpeedCEM[®]

The new self-adhesive resin cement is bound to convince users instantly:

- **quick** – direct application from the automix syringe
- **easy** – from mixing to the removal of excess material
- **versatile** – for IPS e.max[®], oxide ceramics and metal



SpeedCEM®

Self-adhesive, self-curing resin cement with light-curing option that simplifies and speeds up cementation procedures. It eliminates the need for conditioning with phosphoric acid and bonding.



Indication:

Self-adhesive cementation of indirect restorations made of the following materials:

- Metal and metal ceramics
- High-strength all-ceramics (zirconium oxide, lithium disilicate and aluminium oxide ceramics)
- Fibre-reinforced composites

Advantages:

- No phosphoric acid etching
- No primer, bonding agents or adhesives for enamel and dentin
- Time-saving direct application (no manual mixing, no activation of capsules, no additional application aids required, accurate application, constant mixing ratio)
- Easy removal of excess material
- Good bonding values
- High strength
- High radiopacity

Shades:

Transparent, yellow, opaque

Delivery forms

Refill

SpeedCEM Automix Syringe	1 x 9 g	
Mixing Tips	15x	
var. accessories		
Transparent		627590
Yellow		627591
Opaque		627592

Starter Pack

SpeedCEM Automix Syringe	1 x 2.5 g	
Mixing Tips	4x	
Monobond Plus	1 x 1 g	
var. accessories		
Transparent		627589

Refill Mixing Tips	15x	592225
Root Canal Tips	5x	603018

Vivaglass® CEM PL

Self-curing glass ionomer cement with high translucency.



Indications:

- Cementation of full-cast crowns or veneers, high-strength all-ceramic materials and orthodontic bands.

Advantages:

- High translucency
- 1:1 mixing ratio
- Convenient tube
- Radiopacity
- Strong bond to dentin
- Optimum wetting of powder and liquid
- Easy removal of excess material

Shade:

Universal

Delivery form

Assortment	1 x 30 g / 10 ml	562256
Powder, Liquid, var. accessories		

Combinations by Products

Cement	Esthetic Luting Composite System		Universal Luting Composite System	Self-adhesive Resin Cement
	Variolink® Veneer	Variolink® II	Multilink® Automix	SpeedCEM
	Light-cure	Light/Dual-cure	Self-cure with light-curing option	Self-cure with light-curing option
Curing Mode				
Cementation Method	Adhesive: Syntac or ExciTE F Total-Etch	Adhesive: Syntac or ExciTE F DSC Total-Etch	Adhesive: Multilink Primer A/B Self-Etch	Self-Adhesive
IPS e.max Press	✓	✓	✓	✓*
IPS e.max CAD	✓	✓	✓	✓*
IPS e.max Ceram Veneers	✓	✓	–	–
IPS e.max ZirCAD	–	–	✓	✓
IPS Empress Esthetic	✓	✓	✓	–
IPS Empress CAD	✓	✓	✓	–
SR Adoro ¹ (metal-based)	–	–	✓	✓
SR Adoro ¹ (metal-free)	✓	✓	✓	–
IPS d.SIGN				
IPS InLine / IPS InLine PoM	–	–	✓	✓
IPS Classic				
FRC Postec Plus	–	✓	✓	✓
CosmoPost	–	–	✓	✓



Please take note of the corresponding Instructions for Use.

- ✓ Recommended product combination
- * Recommended depending on indication
- Not recommended
- ¹ not available in all countries

Heliosit® Orthodontic

Light-curing, highly transparent single-component luting material for brackets.



Advantages:

- No dosing, no mixing
- Brackets can be placed on the tooth surfaces without time pressure due to the light-curing properties of the material

Delivery form

Refill	3 x 2.5 g	532629
--------	-----------	--------

Vivaglass® Liner

Light-curing glass ionomer cement for bases/liners.



Advantages:

- Continuous fluoride release
- Good dentin adhesion
- Outstanding radiopacity
- Light-curing, thus easy to process

Delivery forms

Intro Pack	1 x 10 g / 1 x 8 g	536452
Powder, Liquid, var. accessories		
Refill Powder	1 x 10 g	535840
Refill Liquid	1 x 8 g	535839

ApexCal®

ApexCal is the new, creamy calcium hydroxide paste suitable for use as a temporary disinfectant dressing during endodontic treatment.



Direct application of ApexCal with a tip Application of ApexCal with a lentulo spiral Rinsing out of the temporary ApexCal dressing

Indications:

- Applied as a drug filler during root canal treatment and used for indirect and direct pulp capping

Advantages:

- Time-saving direct application
- Easy removal, as the material does not set when in place
- High radiopacity (400% Al)

Delivery forms

Refill		595915
Syringes ApexCal	2 x 2.5 g	
Cannulas	15x	
Refill		596608
Cannulas	15x	

Apexit® Plus

Calcium hydroxide root canal sealer for the permanent obturation of root canals.



Initial situation Direct application of Apexit Plus using an Intra Canal Tip Application of Apexit Plus using a lentulo spiral



Insertion of the gutta percha points Condensation of the gutta percha points using a spreader Obturated root canal

Indications:

- Permanent obturation of root canals in conjunction with all obturation techniques involving gutta-percha

Advantages:

- Excellent tissue tolerance
- Durable sealing of the root canal due to the slight setting expansion
- Its easy flowing composition allows the material to adapt well even to morphologically complicated canals
- Convenient application (automix syringe and Intra Canal Tip enable easy direct application)
- Long working time (mixed Apexit Plus can be used over 3 hours at room temperature)

Delivery forms

Refill		593991
Double-push Syringes	2 x 6 g	
Mixing Tips	15x	
Intra Canal Tips	5x	
Refill		595132
Mixing Tips	15x	
Refill		597380
Intra Canal Tips	15x	

FRC Postec® Plus

FRC Postec Plus is a highly esthetic and highly radiopaque root canal post composed of glass fibre-reinforced composite. The post is suitable for the chairside reconstruction of endodontically treated teeth that show extensive coronal damage.

The FRC Postec Plus system consists of light-transmitting glass fibre-reinforced composite posts in three sizes and includes purpose-designed stainless steel reamers for the preparation of the recipient site of the post space.



Prepare the post space



Cement the post with Multilink



Build up the core with MultiCore Flow



Completed core build-up

Indications:

- Restoration of endodontically treated anterior and posterior teeth that demonstrate severe coronal damage

Advantages:

- Lifelike appearance
- Superior radiopacity
- High retention
- Gentle on roots
- Clearly arranged system using tried-and-tested products
- Easy to remove
- Clinically proven concept

Delivery forms

Intro Pack Size 0/1/3		603543
FRC Postec Plus Size 0	3x	
FRC Postec Plus Size 1	5x	
FRC Postec Plus Size 3	2x	
FRC Postec Plus Reamer Size 0	1x	
FRC Postec Plus Reamer Size 1	1x	
FRC Postec Plus Reamer Size 3	1x	
Refill Size 0	20x	603540
Refill Size 0	5x	603541
Refill Size 1	20x	590222
Refill Size 1	5x	583244
Refill Size 3	20x	590223
Refill Size 3	5x	583245
Refill Reamer, Size 0	1x	603542
Refill Reamer, Size 1	1x	572801
Refill Reamer, Size 3	1x	572800

MultiCore®

Self-curing composite core build-up material with light curing option. Two consistencies, two techniques, two curing methods and four shades provide an optimum foundation for the reconstruction of vital and non-vital teeth with part or most of the clinical crown missing.



Automix syringe, 10 g



Cartridge, 50 g



Syringe, 4 g

Indications:

- Core build-up of vital and non-vital teeth

Advantages:

- A suitable consistency for every technique: MultiCore HB for the moulding technique, MultiCore Flow for the matrix technique
- Based on Ivoclar Vivadent's long-term experience in the field of composite technology
- A suitable option for every case: Self- or light-curing
- Four different shades
- Coordinated system with the self-etching AdheSE

Shades:

Light, medium, blue and white

Delivery forms

MultiCore® Flow

Refill	1 x 10 g
Automix Syringe, var. accessories	
Light	604166
Medium	604167
White	604168

Mixing Tips small	10x	604209
Intra Oral Tips small	10x	604210
Root Canal Tips	5x	603018

Refill	1 x 50 g
Base, Catalyst, var. accessories	
Light	578913
Medium	578914
Blue	578915

Dispenser	1x	579094
Mixing Tips	50x	579096
Intra Oral Tips	50x	579095

MultiCore® HB

Refill	4 x 4 g
Base, Catalyst, var. accessories	
Light	578919
Medium	578920
Blue	578921

Virtual®

Virtual is the new line of vinylpolysiloxane impression materials specifically developed to meet the requirements of today's most popular impression taking techniques.

The system features the five viscosities Putty, Heavy Body, Monophase, Light Body and Extra Light Body in both "fast" (2:30 min.) and "regular" (4:30 min.) setting times.

The system is complemented by a full line of accessories, including a tray adhesive.



Indications:

- Final impressions used for the fabrication of indirect restorations (crowns, bridges, inlays, onlays and veneers)
- Dental implant impressions
- Matrix for "wax-ups" and treatment planning, study models
- Edentulous impressions
- Matrix used to create temporary restorations

Advantages:

- Excellent adaptation to the moist oral hard and soft tissues
- Excellent moisture displacement
- Exceptional readability and precision
- Flexible working times and fast setting phase
- Fresh peppermint scent
- Outstanding balance of physical properties

Shades:

- Sea blue: Virtual Putty, Virtual Heavy Body and Virtual Monophase
- Caramel: Virtual Light Body and Virtual Extra Light Body

Delivery forms

Multi Pack	12 x 50 ml + Mixing Tips	
Extra Light Body Fast		572812
Extra Light Body Regular		572813
Light Body Fast		572826
Light Body Regular		572827
Monophase Fast		572828
Monophase Regular		572829
Heavy Body Fast		572830
Heavy Body Regular		572831

Refill	2 x 50 ml + 12 Mixing Tips	
Extra Light Body Regular		562827
Extra Light Body Fast		562828
Light Body Regular		562829
Light Body Fast		562830
Monophase Regular		562831
Monophase Fast		562832
Heavy Body Regular		562835
Heavy Body Fast		562836

Refill		
Putty Regular	2 x 300 ml	562839
Putty Fast	2 x 300 ml	562840

Virtual Accessories

Tray Adhesive	1 x 10ml	562841
Refill Mixing Tips, small	48x	572806
Refill Mixing Tips, large	48x	572807
Refill Intra Oral Tips, large	100x	572808
Refill Intra Oral Tips, small	100x	572809
Refill Dispenser 1:1	1x	572810

Virtual® 380

The two consistencies Heavy Body and Monophase are now offered as Virtual 380 in new, large cartridges.

These XXL cartridges are suitable for use in e.g. Pentamix, Plug & Press Dispenser and MixStar mixing units.



Advantages:

- Ready-to-use, large cartridge - convenient handling
- Separate activation as in the case of foil bags is not required
- Economical package size - contents 380ml

Delivery forms

Multi Pack	6 x 380 ml each + Mixer + Bayonet Ring
Monophase Fast	594835
Heavy Body Fast	594836
Heavy Body Regular	594837

Refill	2 x 380 ml each + Mixer + Bayonet Ring
Monophase Fast	594838
Heavy Body Fast	594839
Heavy Body Regular	594840

Virtual® 380 Accessories

Refill Dynamic Mixer	50x	600158
Refill Bayonet Ring	2x	600159

Technical data	Virtual®						Virtual® 380	
	Extra Light Body	Light Body	Monophase	Heavy Body	Putty	CADbite Registration	Monophase	Heavy Body
Shade	Caramel	Caramel	Sea blue	Sea blue	Sea blue	Light blue	Sea blue	Sea blue
Working time • Fast • Regular	1:45 Min. 3:00 Min.	1:35 Min. 2:35 Min.	1:35 Min. 2:35 Min.	1:15 Min. 2:05 Min.	1:15 Min. 1:25 Min.	max. 0:30 Min.	1:35 Min. -	1:35 Min. 2:05 Min.
Set Time in Mouth • Fast • Regular	2:30 Min. 4:30 Min.	2:30 Min. 4:30 Min.	2:30 Min. 4:30 Min.	2:30 Min. 4:30 Min.	2:30 Min. 4:30 Min.	0:45	3:30 Min. -	2:30 Min. 4:30 Min.
Linear dimensional change	< 0.20 %	< 0.20 %	< 0.20 %	< 0.20 %	< 0.20 %	< 0.05 %	< 0.20 %	< 0.20 %
Strain in compression (min. - max.)	3 - 5 %	3 - 5 %	3 - 5 %	3 - 5 %	1 - 3 %	-	3 - 5 %	3 - 5 %
Recovery from deformation	> 99.5 %	> 99.5 %	> 99.5 %	> 99.5 %	> 99.0 %	-	> 99.5 %	> 99.5 %
Detail reproduction	20 µ	20 µ	20 µ	20 µ	50 µ	-	20 µ	20 µ
Shore A Hardness	47 ± 3	54 ± 3	67 ± 3	68 ± 3	61 ± 3	32 Shore D	67 ± 3	68 ± 3

Virtual® CADbite Registration

Virtual CADbite registration material is scannable and can be used for the optical recording of data when fabricating restorations with CAD/CAM systems such as CEREC. Virtual CADbite is an addition silicone, which may also be used for „conventional“ bite registration techniques in conjunction with indirect restorative procedures. The material demonstrates a non-slump consistency, short setting time and good dimensional stability. Moreover, it provides excellent reproduction of detail and achieves a final hardness of 32 Shore D.



Bite registration with Virtual CADbite in situ



Scanned bite record

Advantages:

Fast

As the material requires an intra-oral set time of only 45 seconds, the risk of distortions and inaccuracies due to patient jaw movements are substantially reduced. At the same time, Virtual CADbite provides sufficient working time to allow full-arch bite registrations to be taken.

Strong

Due to the material's high final hardness of 32 Shore-D and high fracture toughness, Virtual CADbite registrations are easy to trim and grind. Moreover, undesirable shifts are prevented when adjusting the position of the casts in the articulator.

Scannable

In response to the needs of CAD/CAM users across the globe, Virtual CADbite has been given a reflective surface. It delivers excellent results when capturing images with intra-oral scanning devices.

Delivery forms

Multi Pack	12 x 50 ml	607909
-------------------	-------------------	---------------

and Mixing Tips

Refill	2 x 50 ml	607908
---------------	------------------	---------------

and Mixing Tips

Accessories

Refill Mixing Tips, small	48x	572806
----------------------------------	------------	---------------

Vival NF

The precise alginate impression material for tailor-made anatomical impressions. Vival NF is a dust-free alginate that sets quickly in 2 min. 10 sec.



Indications:

Anatomical impressions of

- single teeth
- partial-arch impressions in dentulous, partially edentulous and edentulous patients
- full-arch impressions

Impressions for preliminary casts to

- fabricate temporary restorations

Advantages:

- Dimensionally stable for up to 100 hours
- Elastic recovery of 98%
- Thixotropicity: only flows under pressure
- Compatible with currently used dental stones
- Creamy consistency
- Fresh peppermint scent

Shade:

Light blue

Delivery forms

Intro Pack	2 x 500 g	572688
-------------------	------------------	---------------

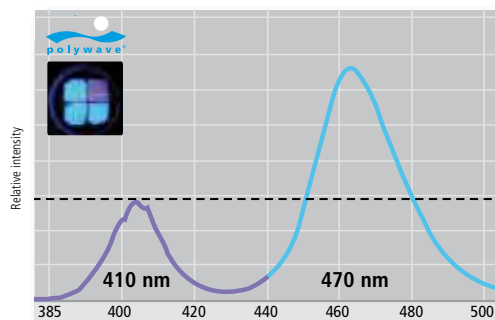
incl. Box

Multi Pack	20 x 500 g	572686
-------------------	-------------------	---------------

new
LED for every use

With its specially developed **polywave® LED**, the 2nd generation of the bluephase family sets new standards in the dental practice.

In contrast to conventional LED devices, the new polywave LED achieves an optimal broadband range from 385 to 515 nm, which is similar to the spectrum of halogen lights that served as its model. The new polywave LED light is therefore suitable for all photoinitiators.



Every material due to polywave® LED

Due to the two different LEDs that are used – one with approx. 410 nm and the other approx. 470 nm dominant wavelength – bluephase is suitable for all light-curing materials.



Every indication due to continuous cooling

As opposed to annoying interruptions and irritating waiting times, the invisible and virtually noiseless fan of the bluephase light allows continuous operation without any clinical limitations – even extensive indirect restorations can be placed without interruptions.



Every time due to Click & Cure

The proven **Click & Cure** function enables users to avoid irritating waiting times if the battery has run out. The handpiece can be connected to the power cord of the charging base with just one click.

This is how it works: Turn around charging base; remove power cord; attach to handpiece; resume work as usual.

bluephase® 20i – on a maximum mission

The bluephase 20i is a battery-operated high-performance LED polymerization unit that generates a light intensity of 2,000 mW/cm² and offers impressively short curing times of 5 seconds.

Indication:

LED curing light for the polymerization of all light-curing dental materials in the wavelength range of 380 to 515 nm.



Advantages:

- Halogen-like light spectrum due to polywave® LED technology (385 to 515 nm)
- Turbo program offering a uniquely high light intensity of 2,000 mW/cm² and impressively short curing times of 5 seconds
- Built-in fan enabling unrestricted use without clinical limitations
- Click & Cure for optional mains operation, independent of the battery
- Cordless design offering the ultimate in mobility
- Selection of four programs for fast, maximum, close-to-the-pulp and stress-reduced polymerization, respectively
- Powerful lithium-polymer battery offering 45 minutes of operation
- Seamless construction of the housing for optimum practice – Modern OLED colour display offering enhanced brightness and readability
- Innovative movement sensor ensuring immediate readiness for operation
- 3-year warranty (1-year warranty for battery)

Delivery forms

bluephase 20i 100 – 240 V	613735
bluephase 20i 100 – 240 V (incl. bluephase)	613752
bluephase 20i Akku	627300
bluephase 20i Handstück (handpiece, battery, light probe)	613753

bluephase® – on a proven mission

The classic bluephase is a cordless high-performance curing light with a light intensity of 1.200 mW/cm².

Indication:

LED curing light for the polymerization of all light-curing dental materials in the wavelength range of 385 to 515 nm.



Advantages:

- Suitable for all materials due to polywave® LED technology with a broad light spectrum ranging from 385 to 515 nm
- Built-in fan enabling unrestricted use without clinical limitations
- Click & Cure for optional mains operation, independent of the battery
- Cordless design offering the ultimate in mobility
- High light intensity of 1,200 mW/cm² for short curing times of 10 seconds and longer
- 10-mm light probe for particularly large treatment fields
- Selection of three programs for maximum, close-to-the-pulp and stress-reduced polymerization, respectively
- High-performance lithium-polymer battery offering an operation time of 60 minutes
- Seamless construction of the housing for optimum practice hygiene
- Modern OLED colour display offering enhanced brightness and readability
- Innovative movement sensor ensuring immediate readiness for operation
- 3-year warranty (1-year warranty for battery)

Delivery forms

bluephase 100 – 240 V	607920
bluephase 100 – 240 V (incl. bluephase meter)	607921
bluephase Akku	608535
bluephase Handstück (handpiece, battery, light probe)	608532



bluephase® C8 – on an economical mission

The new bluephase C8 is a mains-operated, cost-effective LED curing light offering a light intensity of 800 mW/cm².

Indication:

LED curing light for the polymerization of all light-curing dental materials in the wavelength range of 385 to 515 nm.



Advantages:

- Halogen-like light spectrum due to polywave LED technology (385 to 515 nm)
- Cost-effective LED curing light with a light intensity of 800 mW/cm²
- Time-saving curing times of e.g. generally 20 seconds
- Built-in fan enabling unrestricted use without clinical limitations
- Parallel-walled 10-mm light probe suitable for particularly large treatment fields
- Selection of three curing programs (HIGH, SOFT Start and LOW Power program)
- Seamless construction of the housing for optimum practice hygiene
- OLED colour display offering enhanced brightness and readability
- 3-year warranty

Delivery forms

bluephase C8 100 – 240 V	613736
bluephase C8 100 – 240 V (incl. bluephase meter)	613751

* LEDition®

Mains-operated LED polymerization unit.

Indications:

- Light curing unit for the polymerization of light-curing dental materials in the wavelength range of 430 - 490 nm



Advantages:

- Light intensity of generally 600 mW/cm²
- Good ergonomics
- Continuous operation
- Maintenance-free LED
- Low-priced
- One-year warranty

Delivery forms

LEDition 100 – 240 V	602108
Light probe 10 mm black	613700

* Not available in all the countries

bluephase® meter

Licence to measure intensity.

Indications:

- Innovative radiometer with a unique measuring principle to determine the light intensity of LED lights



Advantages:



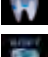

- Unique measuring principle for the accurate measuring of light intensity
- Easy handling
- Universal use for all LED lights
- For all light probes with a circular emission window with a diameter of 7–13 mm
- Dental-specific measuring range for wavelength ranges of 385–515 nm and light intensities of 300–2500 mW/cm²
- Digital display
- Ergonomica and modern design
- Three-year warranty

Delivery form

bluephase meter

607922

Technical data at a glance

	LEDition® 600 mW/cm ² (min. 500/max. 900)	bluephase® C8 800 mW/cm ² ±10%	bluephase® 1.200 mW/cm ² ±10%	bluephase® 20i 2.000 mW/cm ² - 2.200 mW/cm ² LED Class 2	bluephase® meter 300 - 2.500 mW/cm ² ±20%
Every material (wavelength range)	— 430 – 490 nm	✓ 385 – 515 nm	✓ 385 – 515 nm	✓ 385 – 515 nm	✓ 385 – 515 nm
Every indication (continuous operation for at least 10 min)	✓	✓	✓	✓	Measuring the light intensity of LED curing lights
Every time Click&Cure (optional mains operation)	✓ (mains operation)	✓ (mains operation)	✓	✓	
Curing time for composites	30 sec	20 sec	15 sec	10 sec	
Curing time for Tetric EvoCeram, IPS Empress Direct	20 sec	15 sec	10 sec	5 sec	
Curing programs					
TURBO 	—	—	—	2,000 mW/cm ²	
HIGH Power 	600 mW/cm ²	800 mW/cm ²	1,200 mW/cm ²	1,200 mW/cm ²	
LOW Power 	—	650 mW/cm ²	650 mW/cm ²	650 mW/cm ²	
SOFT Start 	—	650 / 800 mW/cm ²	650 / 1,200 mW/cm ²	650 / 1,200 mW/cm ²	
Light probe	10 mm black	10 mm black	10 mm black	10>8 mm black	
Power supply	Mains operation	Mains operation (upgrade to battery operation possible)	Lithium-polymer battery capacity: approx. 60 min/ charging time: approx. 2h	Lithium-polymer battery capacity: approx. 45 min/ charging time: approx. 2h	3 x LR6 AA 1,5 VDC
Display	—	OLED colour display	OLED colour display	OLED colour display	Digital LCD display
Warranty	1 year	3 years	3 years (battery 1 year)	3 years (battery 1 year)	3 years

Accessories

		LEDition®	bluephase® C8	bluephase®	bluephase® 20i
100 - 240V		602108	613736	607920	613735
100 - 240V & bluephase meter		—	613751	607921	613752
bluephase meter	607922	✓	■	■	■
10 mm light probe, black	608537	—	■	■	—
10 mm light probe, black	613700	■	—	—	—
10>8 mm light probe, black	627389	—	—	—	■
6>2 mm (Pin-Point), black	608538	—	✓	✓	✓
Protective sleeves	608554	✓	✓	■	■
Anti-glare cone	551756	■	■	■	■
Anti-glare shield	592496	✓	✓	✓	■
Battery		—	—	608 535	627 300
Handpiece		—	—	608 532 (Handpiece, battery, light probe 10 mm)	613 753 (Handpiece, battery, light probe 10>8 mm)

■ Included in delivery form ✓ Available as accessory

Silamat® S6

Form and function – perfectly mixed.

Indication:

- Modern universal mixer for amalgam, glass ionomer cements and other preposed dental materials in capsules and injection capsules



Advantages:

- Attractive design for the modern dental practice
- Thanks to its rounded shape and the removable cover the unit can be cleaned easily
- Tried-and-tested Silamat technology
- Above-average speed of 4500 rpm
- Special figure-eight pattern and patented mixing fork
- Compatible with all popular capsules and injection capsules in various shapes and sizes
- Three-year warranty
- Voltage 100–240 VAC

Delivery form

Silamat S6 110 – 240 VAC 602286

Programat® CS

The Programat CS is an easy-to-operate, small furnace including vacuum for the dental office. It is particularly suitable for glaze and crystallization firing.

The furnace is ideally coordinated with the IPS e.max CAD blocks. Because of its small dimensions, the furnace occupies very little space in the dental office. Thanks to the vacuum function, more complex firing cycles with high-quality results can be conducted.

Technical data:

- Voltage: 200–240 V / 50–60 Hz
110–120 V / 50–60 Hz
100 V / 50–60 Hz
- Dimensions
 - of the closed furnace: W = 305/410 mm
(with cooling tray) x D 430 mm
x H 320 mm
 - of the firing chamber: D 80 mm / H 48 mm
- Maximum firing temperature: 1200 °C



Advantages:

- Speed program for IPS e.max CAD enables faster crystallization of the material
- Special program for the IPS e.max CAD-on technique
- Multi-functional unit (for glaze and crystallization firing)
- Easy operation and short time needed to get acquainted with the unit due to the symbols on the display
- Compact dimensions: The furnace occupies very little space in the dental office
- 17 individual programs: Safe investment into the future, since enough program space is available for new ceramic materials
- Short power cuts will not interrupt the program thanks to the Power Fail Safe function
- In case of a vacuum defect, the Electronic Vacuum Control System (EVCS) will interrupt the firing process after the program has started
- Removable furnace head for easy transportation

Colour:

White

Delivery forms

Programat CS

Programat CS Basic unit, power cord, vacuum hose, extra fuses, Programat Firing Tray Kit

	110 – 120 V	597374
	200 – 240 V	597375
	100 V	608713

Vacuum Pump VP4

The high-performance Vacuum Pump VP4 has been especially developed for Ivoclar Vivadent ceramic and press furnaces. The pump features a very high delivery rate. In addition, it is characterized by a clear design and a carrying handle to easily move the furnace.

Technical data:

- Voltage: 230 V / 50 – 60 Hz
200 V / 50 – 60 Hz
115 V / 50 – 60 Hz
100 V / 50 – 60 Hz
- Power consumption: 80 Watt
- Final vacuum: approx. 30 mbar
- Dimensions: 320 x 212 x 110 mm (W x H x D)



Advantages:

- Modern ergonomic design
- High vacuum performance
- High final vacuum (approx. 20 mbar)
- High running smoothness
- Integrated carrying handle

Colour:

white

Delivery forms

Vacuum Pump VP4	230 V / 50 – 60 Hz	602172
	200 V / 50 – 60 Hz	602174
	115 V / 50 – 60 Hz	602173
	100 V / 50 – 60 Hz	613888

Vacuum Pump VP3 easy

The small and light-weight VP3 easy vacuum pump is suitable for the evacuation of the firing chamber in the Programat CS. The diaphragm pump is characterized by low weight and extremely small dimensions.

Technical Data:

- Voltage: 230 V / 50 – 60 Hz
200 V / 50 – 60 Hz
115 V / 50 – 60 Hz
- Power consumption: 70 W
- Dimensions: 140 x 130 x 210 mm (W x H x D)



Advantages:

- Light weight
- Small dimensions
- Final vacuum: approx. 40 mbar

Colour:

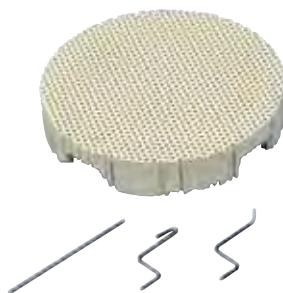
grey

Delivery forms

Vacuum Pump VP3 easy	230 V / 50 – 60 Hz	594554
	200 V / 50 – 60 Hz	594560
	115 V / 50 – 60 Hz	594557

Programat® Firing Tray Kit for IPS Empress CAD

This large honeycomb firing tray can be used for the stains and glaze firing of IPS Empress CAD restorations. The support pins can be mounted to the firing tray if required.



Delivery forms

Programat Firing Tray Kit	598642
Programat Firing Tray	1x
Metal Pins A	4x
Metal Pins B	4x
Metal Pins C	4x

Metal Pins for Firing Tray

The support pins can be used for the Programat firing tray and can be mounted to the honeycomb firing tray if required.



Delivery forms

Metal Pins for Firing Tray, Refill	626698
Metal Pins A	4x
Metal Pins B	4x
Metal Pins C	4x

IPS e.max® CAD Crystallization Tray

Firing tray for the crystallization of IPS e.max CAD restorations.



Advantage:

- For slow and tensionfree cooling of the glass-ceramic

Delivery form

IPS e.max CAD Crystallization Tray

605367

Automatic Temperature Checking Set "ATK 2"

The automatic temperature checking set «ATK 2» is used to check and adjust the firing temperatures in furnaces with automatic calibration programs for the ATK2 system (e.g. Programat CS). The simultaneous double-range calibration is a special feature of the ATK2.



Delivery form

Automatic Temperature Checking Set "ATK 2"

598833

ATK 2 Samples

5x

Firing Tongs

These firing tongs are used to place objects in the firing chamber. High precision and excellent material quality are the special features of these tongs.



Delivery form

Firing Tongs

1x

530665

* Cultura Incubator

For incubation of yeast and bacterial cultures in the dental practice.



Technical Data:

- Temperature range: 25 – 55 °C
- Consistency of temperature: ± 1 °C
- Voltage: 220 – 240 V / 50 – 60 Hz
100 – 120 V / 50 – 60 Hz
- Power: 30W / 0.2 A

Delivery forms

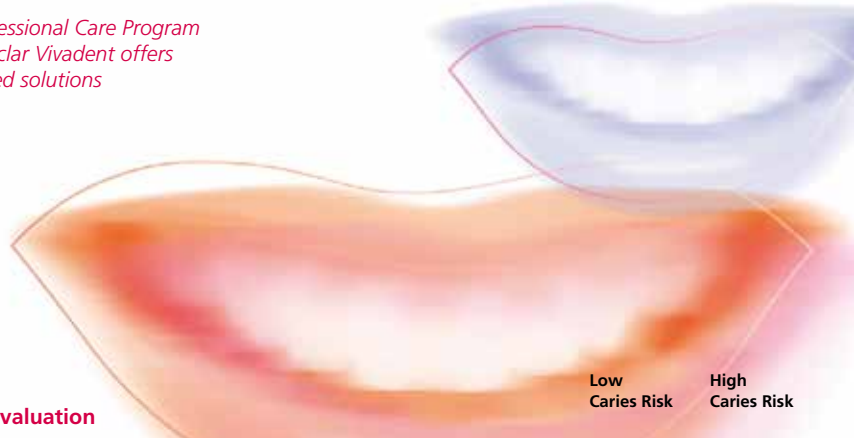
Cultura Incubator	220 – 240 V	533539
	100 – 120 V USA	538325

* Not available in all the countries

Ivoclar Vivadent

Oral health management

The Professional Care Program
from Ivoclar Vivadent offers
integrated solutions



Evaluation		Low Caries Risk	High Caries Risk	
Findings	Plaque accretion	Plaque Test	✓	
	Initial lesion		✓	
	Mutans streptococci (CFU/ml saliva)	CRT bacteria	< 10 ⁵	≥ 10 ⁵
	Lactobacilli (CFU/ml saliva)	CRT bacteria	< 10 ⁵	≥ 10 ⁵
	Salivation rate (ml saliva/min.)	CRT bacteria	≥ 1	< 0,7
	Buffer capacity	CRT buffer	high	low

Recommended treatment

Dental practice	Targeted recording of case history		✓	
	Check-ups		✓ 2x/a	✓ 4-6x/a
	Re-assessment of caries risk	CRT bacteria	✓	✓
		CRT buffer	✓	✓
	Bitewing X-ray for the early detection of proximal caries		✓	✓
	Restoration of carious lesions	Tetric EvoCeram	✓	✓
		Tetric EvoFlow	✓	✓
		bluephase	✓	✓
	Reconstruction	IPS Empress	✓	✓
		Variolink II	✓	✓
	Removal of plaque retention sites		✓	✓
	Protection of exposed cervicals	VivaSens	✓	✓
	Fissure sealing	Helioseal		✓
	Topical fluoride application	Fluor Protector	✓ 2x/a	✓ 4-6x/a
	Motivation and instruction for oral hygiene improvement		✓	✓
	Professional tooth cleaning	Proxyt, OptraGate	✓	✓
	Topical application of chlorhexidine	Cervitec Plus		✓
Cervitec Gel			✓	
Nutrition counselling			✓	

Measures

At home	Dentifrice containing fluoride		✓	✓
	Cleaning of interdental spaces		✓	✓
	Preparations with fluoride	Fluor Protector Gel		✓
	Preparations with chlorhexidine	Cervitec Gel		✓
		Cervitec Liquid		✓
	Preparations with bicarbonate		✓	✓
	Balanced diet			✓
	Hard-to-chew food			✓
	Sweets and chewing gum with sugar substitute	Wrigley's ORBIT sugarfree gum		✓

In cooperation with the Center
for Dentistry and Oral Medicine,
University Clinic Jena,
Friedrich Schiller University of Jena, Germany

CRT® bacteria

For determining the mutans streptococci and lactobacilli count in saliva.



Advantages:

- Two-in-one: Determining the mutans streptococci and lactobacilli count
- High selectivity of the culture media
- Hygienically sealed agar surfaces
- Excellent scientific backup
- Quick and easy to conduct
- Basis for individual and targeted therapy

Delivery forms

Intro Pack		553545
Dip CRT bacteria	3x	
Test Strips CRT buffer var. accessories	3x	
Refill CRT bacteria, var. accessories	6x	553543
Refill CRT Beaker	10x	556007
Refill CRT Paraffin	6x	553546

CRT® buffer

For determining the buffer capacity of saliva.



Advantages:

- Individually packed test strips
- Reliable results
- Quick and easy to conduct
- Results available after only five minutes

Delivery forms

Refill CRT buffer, var. accessories	6x	553544
--	-----------	---------------

Plaque Test

Fluorescent disclosing liquid to expose plaque by means of a polymerization light.



Advantages:

- No inconvenient staining of tongue and mucous membranes
- Easy handling
- Fluorescent under any polymerization light

Delivery forms

Refill	1 x 11 g	533299
---------------	-----------------	---------------

VivaSens®

Desensitizing varnish for hypersensitive teeth.



Indications:

- Hypersensitive cervicals
- Hypersensitivities due to bleaching
- Desensitization after professional tooth cleaning, scaling and root planing
- Dentin protection under restorative materials

Advantages:

- Long-term relief
- Quick to work
- Quick to use
- Gentle to gums
- Free Stand Single Dose - free-standing with grip surface

Delivery forms

Single Dose

Assortment	22 x 0.1 g	561958
Intro Pack	6 x 0.1 g	561959

Bottle

Assortment	1 x 4 g	574359
------------	---------	--------

Cervitec® Plus

Chlorhexidine-containing protective varnish of the next generation. Cervitec Plus is based on its predecessor Cervitec, whose effectiveness has been well-documented for years. Highly effective of 1% chlorhexidine plus 1% thymol.



Indications:

- Hypersensitive cervicals
- Gingivitis
- Patients with high MS counts, e.g.:
 - orthodontic patients
 - patients with insufficient oral hygiene
 - Xerostomia patients
 - families (transmission)

Advantages:

- Sealing of exposed dentinal tubules
- Targeted treatment of particularly susceptible areas
- Long-term availability of active ingredients
- Prevention of the unwelcome side effects commonly associated with chlorhexidine

A new varnish matrix improves the good features:

- Improved adhesion
- Heightened tolerance to moisture for easier application
- Single Dose and economical Multi Dose – something for everyone

Delivery forms

Assortment Single Dose , var. accessories	20 x 0.25 g	602271
Assortment , var. accessories	1 x 7 g	602273
Refill	2 x 7 g	604661

Cervitec® Liquid

Cervitec Liquid is a ready-for-use, alcohol-free mouth rinse. It contains 0.1% chlorhexidine, xylitol and essential oil. The components inhibit the growth of the bacteria that cause infections of the mouth, periodontal disease, caries and halitosis.



Recommended applications:

- As an intensive, temporary mouth rinse treatment
- To prevent the inflammation of the gums, oral mucous membrane and the dental supporting tissue and to assist in their treatment
- Before and after implantological and periodontal interventions and dental and orthodontic surgery
- In the event of high caries risk
- In the event of inadequate oral hygiene
- To prevent halitosis

Advantages:

- Chlorhexidine + xylitol + essential oil provide concentrated antimicrobial action
- Pleasant taste promotes patient compliance
- Suitable for patients who need to avoid alcohol

Delivery forms

Cervitec Liquid	1 x 100 ml	630260
	1 x 300 ml	630221
	6 x 1000 ml	630256

Cervitec® Gel

Oral health care gel with 0.2% chlorhexidine and 900 ppm fluoride.



Fields of application:

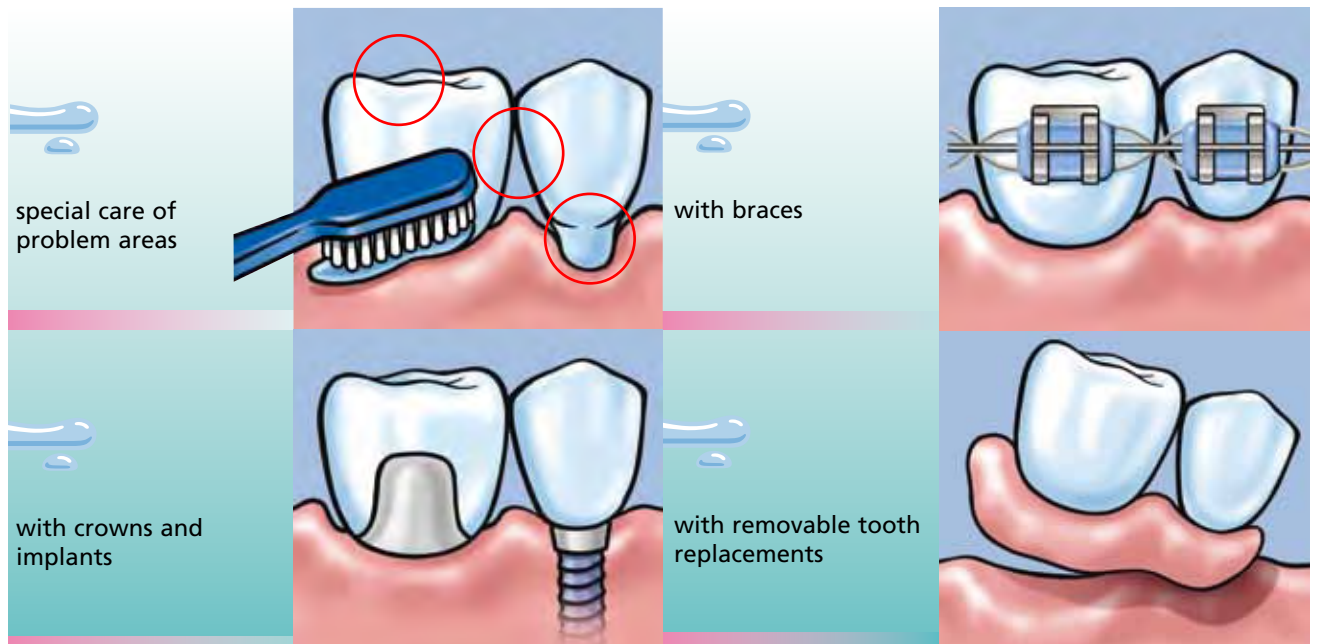
- For the prevention of inflammations by maintaining the health of the gingiva and the oral mucous membrane
- As a support during the therapy of patients with inflammation, such as gingivitis, periodontitis, periimplantitis or denture stomatitis
- With increased bacteria counts

Advantages:

- Less plaque, less gingival inflammation and less halitosis due to less bacteria
- Fluoride protects natural teeth
- Pleasant taste
- Easy application
 - Brush teeth in the evening with Cervitec Gel
 - Apply the gel in proximal areas using an interdental brush
 - Apply the gel directly on the gingiva, mucous membrane or the inner part of the denture

Delivery forms

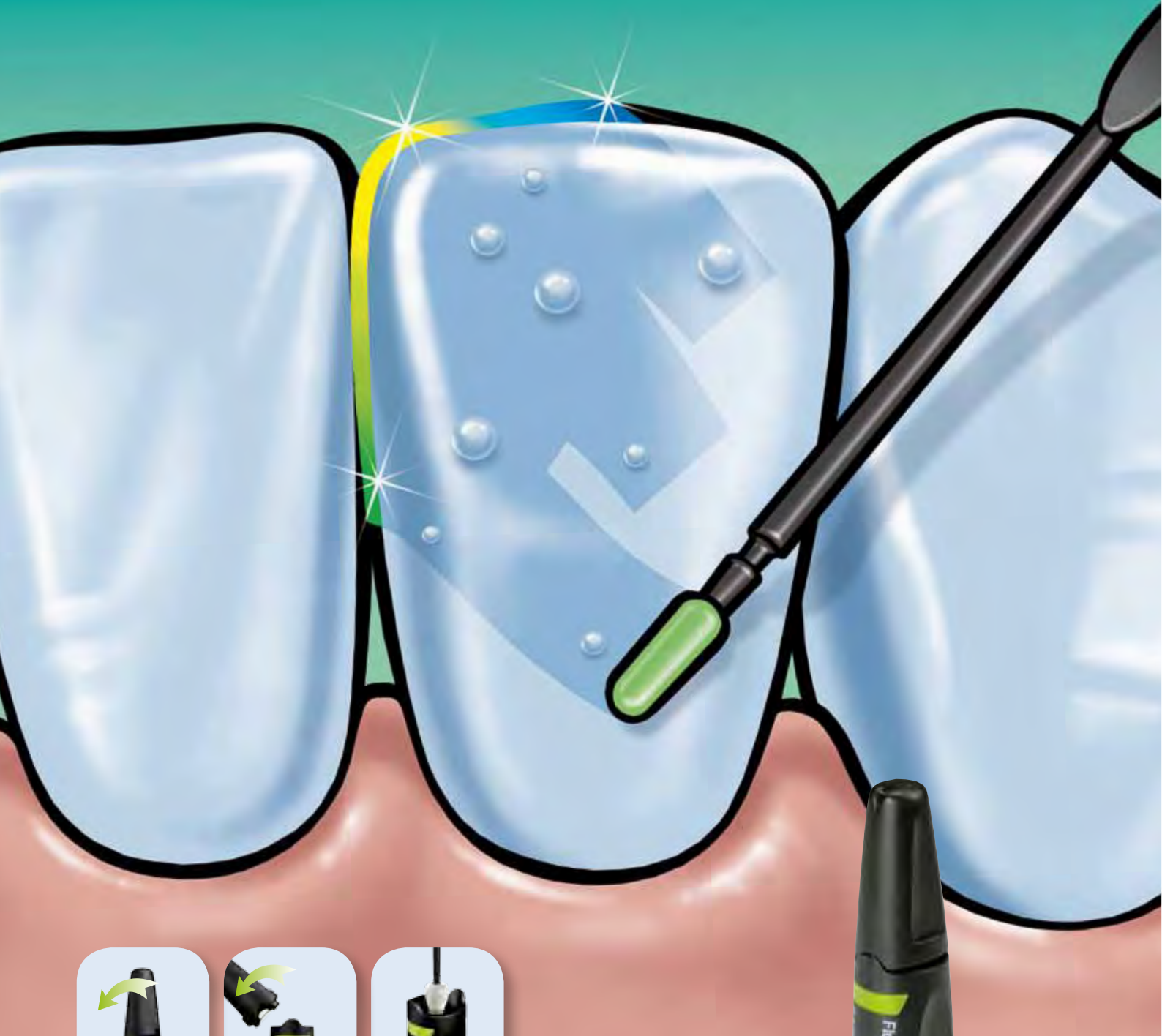
Cervitec Gel	1 x 20 g	616440
	1 x 50 g	616439



Fluor Protector

Protective fluoride varnish

Superior protection against dental caries and erosion



Fluor Protector

Protective varnish containing fluoride for desensitization and caries prophylaxis.



The innovative VivAmpoule opens quickly and easily. Simply snap off the cap and the varnish is ready to use!



Invisible protection with Fluor Protector

Advantages:

- 0.1% in a homogeneous solution; concentration is 10x higher after the varnish has dried
- Highly esthetic
- Excellent adhesion
- Suitable for all age groups

Advanced protection against sensitivity, caries and erosive wear due to:

- Closing of open dentin tubules
- Prevention of demineralization
- Stimulation of remineralization
- Remineralization of incipient caries

Delivery forms

Ampoules

Assortment	25 x 1 ml	533294
-------------------	------------------	---------------

Ampoules, var. accessories

Refill	50 x 1 ml	533293
---------------	------------------	---------------

Ampoules, var. accessories

VivAmpoule

Assortment, var. accessories	20 x 0.4 ml	550578
-------------------------------------	--------------------	---------------

Refill, var. accessories	40 x 0.4 ml	550579
---------------------------------	--------------------	---------------

Intro Pack, var. accessories	4 x 0.4 ml	550580
-------------------------------------	-------------------	---------------

Fluor Protector Gel

Strengthens teeth with calcium plus phosphate plus fluoride

Fluor Protector Gel offers teeth intensive and at the same time gentle care.



Recommended applications:

- Special dental care to protect against caries, erosive wear and periodontal disease
- Sensitive teeth
- Exposed tooth necks
- Patients with acidic diets
- Patients with dry mouth
- During orthodontic treatment
- After professional tooth cleaning
- During tooth whitening

Advantages:

- Calcium + 1450ppm fluoride + phosphate protect the teeth from acid attacks.
- Xylitol inhibits the growth of cariogenic bacteria.
- D-panthenol is soothing to the gums.

Delivery forms

Fluor Protector Gel	1 x 20 g	628437
	1 x 50 g	628436

Helioseal®

Helioseal® F

Helioseal® Clear

Light-curing, resin-based fissure sealants for the preventive sealing of pits and fissures, using the enamel etching technique. The new, ergonomically shaped syringe fits snugly in the palm of the hand and therefore allows the sealants to be dosed and applied more accurately than previous versions of the products.



Helioseal

White-shaded sealant that permits easy control during application and at recalls

Helioseal F

White-shaded sealant with additional fluoride release

Helioseal Clear

Transparent sealant for excellent esthetic results and easy monitoring of fissures in case of doubt

Advantages:

- Ergonomic design of the syringe
- Precise application, the basis for top quality sealing results
- Well-proven in many years of clinical use

Delivery forms

Helioseal

Assortment	1 x 8 g	533298
-------------------	----------------	---------------

Helioseal, Email Preparator blue, var. accessories

Refill	1 x 8 g	533297
---------------	----------------	---------------

Helioseal F

Assortment	5 x 1.25 g	558518
-------------------	-------------------	---------------

Helioseal F, Email Preparator blue, var. accessories

Refill Syringe	1 x 1.25 g	558519
-----------------------	-------------------	---------------

Refill Cavifils	50 x 0.1 g	543793
------------------------	-------------------	---------------

Helioseal Clear

Assortment	5 x 1.25g	558520
-------------------	------------------	---------------

Helioseal Clear, Email Preparator blue, var. accessories

Refill	1 x 1.25 g	558521
---------------	-------------------	---------------

Proxylt®

The new Proxylt prophylaxis pastes with defined grit sizes (RDA) ensure professional, needs-oriented cleaning and polishing of teeth, restorations and implant-supported reconstructions, due to their advanced formula. The pastes contain xylitol, which inhibits the growth of the bacteria that cause caries.



Containing fluoride

Proxylt RDA 83, coarse
Proxylt RDA 36, medium
Proxylt RDA 7, fine

Fluoride-free

Proxylt RDA 36, medium

Advantages:

- Customized, gentle cleaning and polishing
- Scratch-free cleaning of sensitive surfaces using the fine-grit Proxylt without pumice
- Smooth consistency, splatter-free formula
- Fresh peppermint taste

Delivery forms

Refill RDA 7, fine	1 x 55 ml	579866
Refill RDA 36, medium	1 x 55 ml	579867
Refill RDA 83, coarse	1 x 55 ml	579868
Refill RDA 36, medium fluoride-free	1 x 55 ml	633064

VivaStyle®

The professional system for tooth whitening, featuring carbamide peroxide or hydrogen peroxide.
The professional solution for individual needs.

Advantages:

- At-home and in-office preparations
- Application:
 - gel using a tray
 - varnish system applied with a brush
- Different concentrations of the active agent

VivaStyle® 30%

A gel containing 30% carbamide peroxide for in-office treatment. It is applied with a customized tray.

Indications:

- Whitening of discoloured vital or non-vital teeth
- Internal and external

Advantages:

- For the treatment of severe discolourations
- Gentle alternative to products containing highly concentrated hydrogen peroxide
- Use of a rubber dam is not required



Delivery forms

See p. 88

VivaStyle® 10% VivaStyle® 16%

A gel containing either 10% or 16% carbamide peroxide for at-home treatment. It is applied with a customized tray.

Indications:

- Whitening of discoloured vital or non-vital teeth
- Internal and external

Advantages:

- Specially adjusted viscosity
- Calibrated, re-sealable syringe
- Soft and gentle tray material



Delivery forms

See p. 88

VivaStyle® Paint On Plus

A varnish system with hydrogen peroxide for at-home treatment.

Direct application with a brush - no trays required.
High concentration for intensive whitening.

Indications:

- Whitening of vital and non-vital teeth
- External

Advantages:

- Varnish system: targeted application exactly where needed
- Visible whitening: after just 7 days
- D-Panthenol: the provitamin



Delivery forms

See p. 88



Delivery forms

Article with different country classifications due to the registration requirements:

• Medical device

•• Cosmetic product

Patient Kit VivaStyle 16 % 2 Tray Sheets, 1 Tray Case, var. accessories	4 Syringes, 3ml each	583160	602896
Touch Up Kit VivaStyle 16 %	2 Syringes, 3ml each	583161	602897
Patient Kit VivaStyle 10 % 2 Tray Sheets, 1 Tray Case, var. accessories	4 Syringes, 3ml each	583155	602874
Touch Up Kit VivaStyle 10 %	2 Syringes, 3ml each	583156	602875
Patient Kit VivaStyle Paint On Plus 14 brushes, 14 dispensing dishes, var. accessories	1 x 20 ml	591164	602873

• Only available in the following countries:
Europe except Switzerland, Liechtenstein, Spain and Portugal; Africa; Middle East including Pakistan; Japan

•• Only available in the following countries:
Switzerland, Liechtenstein, Spain, Portugal; North and South America; New Zealand; Australia; Asia except Japan

Articles which are available with the same article number in all the countries:

Refill VivaStyle 30 %	1 Syringe, 3ml	562240
Tray Sheet	12x	558805

Skyce®

Crystal glass ornaments that are bonded to the labial surfaces of natural upper anterior teeth without previous preparation.



Skyce is available in 2 sizes:
approx. 1.9 mm and 2.4 mm

Shade:
Crystal

Delivery forms

Intro Pack Heliobond, Total Etch, Skyce Refill crystal small, + Refill crystal large, var. accessories		559320
Refill cristal small	5x	559321
Refill cristal large	5x	559322

OptraGate®

**ExtraSoft
Version**

OptraGate is an innovative auxiliary aid that enables the treatment field to be enlarged easily and comfortably. The material quality of the new successor version OptraGate "ExtraSoft" has been optimized to provide enhanced patient comfort and snug fit, especially in the area of the upper and lower frenulum.

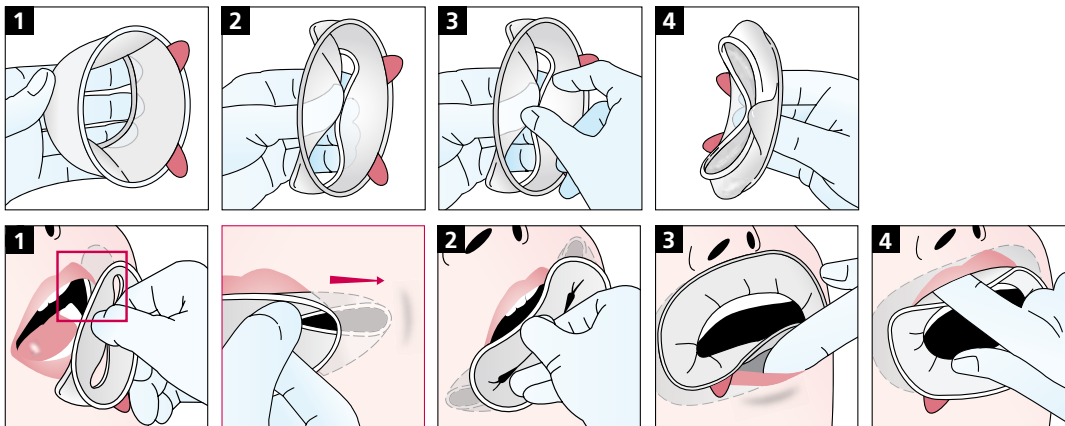
In addition to adult sizes "Regular" and "Small", OptraGate is also available for children in size "Junior".

Advantages:

- Full view of the working field and good access
- High level of patient comfort due to three-dimensional elasticity
- Wide range of applications, also for child dentistry

Delivery forms

Assortment		577275
OptraGate Regular	40x	
OptraGate Small	40x	
Refill		
Regular	80x	590850
Small	80x	590851
Junior	80x	591451



OptraDam® Plus

Patient-friendly rubber dam for the complete isolation of the operation field. Thanks to the integrated metal-free frame, OptraDam Plus can be placed quickly and easily by one person. Due to its anatomical shape and three-dimensional elasticity, a much easier access to a considerably enlarged working area is created.

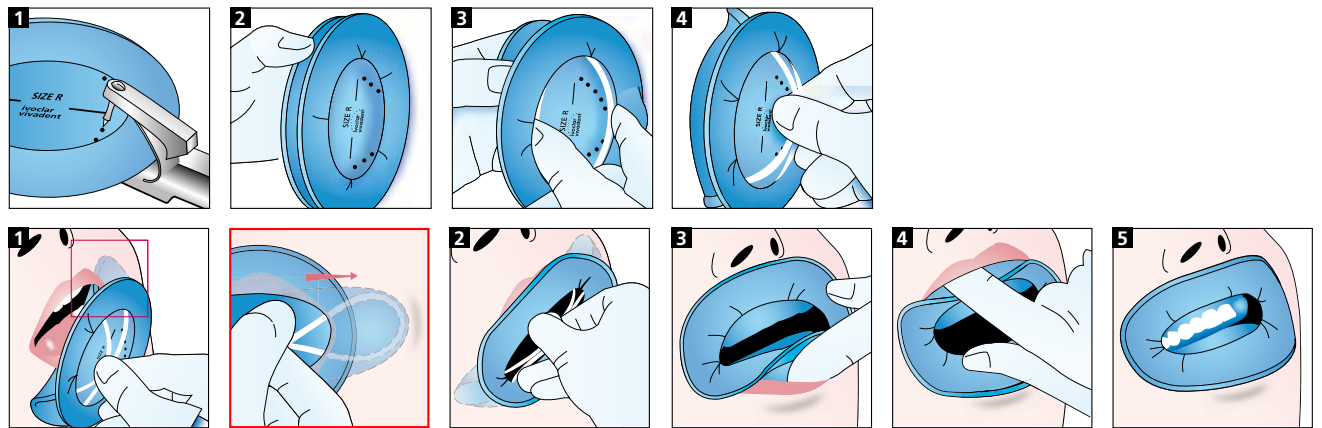
Advantages:

- Fast and easy placement by one person
- Both arches are fully exposed and a completely dry field is achieved simultaneously
- Very high level of patient comfort
- In general, no metal clamps are required



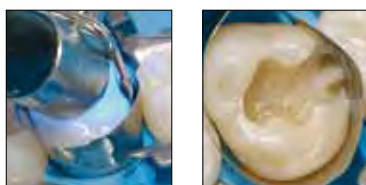
Delivery forms

Assortment		627401
OptraDam Plus Regular	25x	
OptraDam Plus Small	25x	
Refill		
Regular	50x	627399
Small	50x	627400



OptraContact®

Easy to use and highly effective hand instrument for creating large and tight proximal contacts in posterior teeth.



Advantages:

- Tight and large proximal contacts
- Allows selective positioning of the contact in the upper or lower third of the proximal surface respectively
- Easy to use

Delivery forms

Assortment	577276	
OptraContact Molar	1x	
OptraContact Premolar	1x	
Refill Molar	1x	582166
Refill Premolar	1x	582165

OptraSculpt®

Modelling instrument that facilitates working with composite materials. It consists of two high-quality basic instruments as well as special, slightly elastic modelling tips in six different shapes.



Advantages:

- Reduced stickiness of composites
- The position of the working ends can be selected at any point on the 360° axis of the shank
- A total of 15 different instruments can be created by individually combining the different working ends

Delivery forms

Assortment	577273	
OptraSculpt single-ended, OptraSculpt double-ended	1x each	
OptraSculpt ball, OptraSculpt point	40x each	
OptraSculpt spatula, OptraSculpt chisel	40x each	
OptraSculpt cylinder, OptraSculpt pyramid	40x each	
Refill OptraSculpt single-ended	1x	590756
Refill OptraSculpt double-ended	1x	590757
Refill chisel	100x	590762
Refill cylinder	100x	590761
Refill point	100x	590759
Refill pyramid	100x	590763
Refill spatula	100x	590760
Refill ball	100x	590758

OptraPol® "Next Generation"

Highly efficient one-step polishing system highly filled with diamond particles. A high-gloss finish and smooth surfaces are achieved in only one working step. OptraPol polishers can be autoclaved and re-used up to 20 times.

Shapes:

- Small flame
- Large flame
- Cup
- Lens **NEW**



Advantages:

- Quick high-gloss polishing in only one working step
- Smooth surface finish and perfect lustre due to diamond particles
- Multiple use for greater cost-efficiency

Delivery forms

Assortment/18	634464
Small flame	6x
Large flame, cup, lens	4x each

Refill

Cup	10x	634459
Large flame	10x	634461
Small flame	10x	634458
Lens	10x	634460

OptraFine

Highly efficient, multiple-use diamond polishing system for CAD/CAM and lab-fabricated ceramic materials.

Shapes:

- Flame
- Cup
- Disc
- Nylon brushes and diamond polishing paste for high-gloss polishing



Advantages:

- Highly esthetic surface gloss
- Quick and efficient
- Multiple use for greater cost-efficiency

Delivery forms

Assortment	601989
F Flame, F Cup, F Disc	2x each
P Flame, P Cup, P Disc	2x each
HP Nylon Brush	6x
HP Polishing Paste	1x

Refill OptraFine F (light blue)

Flame	10x	601994
Cup	10x	601990
Disc	10x	601992

Refill OptraFine P (dark blue)

Flame	10x	601995
Cup	10x	601991
Disc	10x	601993

Refill OptraFine HP Nylon Brush	10x	602288
---------------------------------	-----	--------

Refill OptraFine HP Polishing Paste	1x	602289
-------------------------------------	----	--------

OptraStick®

OptraStick is a flexible placement instrument which features a ball-shaped, flexible adhesive tip. The tip allows small objects, inlays, onlays and veneers (e.g. made of a IPS Empress®, IPS e.max®) to be picked up, held, carried and placed quickly and easily.



Advantages:

- Quick and precise placement of indirect restorations
- Good adherence of the objects to the adhesive tip
- Wide range of applications

Delivery forms

Refill	50x (5 x 10)	612600
---------------	---------------------	---------------

Astropol®

Multiple-use, finishing, polishing and high-gloss polishing system for composite materials and Ceromers.

Astropol F

Finisher (grey) for the removal of excess composite material from proximal and occlusal surfaces

Astropol P

Polisher (green) for polishing composite and Ceromer materials

Astropol HP

High-gloss polisher (pink) for final high-gloss

Shapes:

- Small flame
- Large flame
- Cup
- Disc



Delivery forms

Assortment	24x	557625
-------------------	------------	---------------

Astropol F: Small flame, large flame, cup, disc,
Astropol P: Small flame, large flame, cup, disc,
Astropol HP: Small flame, large flame, cup, disc

Refill Astropol F (grey)

Small flame	6x	557615
Large flame	6x	557616
Cup	6x	557617
Disc	6x	557618

Refill Astropol P (green)

Small flame	6x	557614
Large flame	6x	557621
Cup	6x	557619
Disc	6x	557620

Refill Astropol HP (pink)

Small flame	3x	557613
Large flame	3x	557622
Cup	3x	557623
Disc	3x	557624

Astrobrush®

Multiple-use, high-gloss polisher for composites, compomers, and glass-ionomers.

No polishing paste necessary. The special fibres contain silicon carbide. As the bristles are worn, fresh abrasive medium is exposed on the surface. The brushes, therefore, demonstrate a consistently high polishing performance.

Astrobrush is autoclavable and can be used up to 20 times.



Shapes:

- Small cup
- Large cup
- Point

Delivery forms

Assortment	15x	559647
-------------------	------------	---------------

Point, large cup, small cup

Refill

Point	6x	559648
Small cup	6x	559649
Large cup	6x	559650

Politip®

Multiple-use, 2-step polishing system for composites and amalgam. The system is composed of the grey Politip-F Finishers and the green Politip-P Polishers.

Shapes:

- Small cup
- Large cup
- Flame



Delivery forms

Professional Set Politip Polisher (P) / Finisher (F)	24x	551580
---	------------	---------------

Finisher shapes: Flame, large cup, small cup
Polisher shapes: Flame, large cup, small cup

Assortment Politip-F (grey)	6x	533599
------------------------------------	-----------	---------------

Finisher shapes: Flame, large cup, small cup

Refill Politip-F

Flame	6x	533602
-------	-----------	---------------

Large cup	6x	533603
-----------	-----------	---------------

Small cup	6x	533604
-----------	-----------	---------------

Assortment Politip-P (green)	6x	533598
-------------------------------------	-----------	---------------

Polisher shapes: Flame, large cup, small cup

Refill Politip-P

Flame	6x	533584
-------	-----------	---------------

Large cup	6x	533585
-----------	-----------	---------------

Small cup	6x	533587
-----------	-----------	---------------

Combi Pack	6x	533608
-------------------	-----------	---------------

Finisher shapes: Flame, large cup, small cup
Polisher shapes: Flame, large cup, small cup

Cavifil® Injector „New Design“

Instrument for the application of dental restorative materials from Ivoclar Vivadent supplied in Cavifils.



Delivery form

Refill Cavifil Injector "New Design"	1x	627882
---	-----------	---------------

VivaPad

Light-protected mixing plate for dual- and light-curing composites and adhesives.



Delivery form

VivaPad	1x	533648
----------------	-----------	---------------

Polyart Mixing Pad

Universally usable mixing pad with 60 pages to tear off.

Size:

- Size 50 x 70mm



Delivery form

Mixing Pad

50 x 70mm	1x	591204
-----------	-----------	---------------

P1 Instrument

Universal contouring/condensing instrument for composites.



Delivery form

P1 Instrument	1x	533646
----------------------	-----------	---------------

Brush Holders

This double-ended brush holder is used to hold soft and hard brushes, as well as Vivabrushes.



Delivery forms

Brush Holders

Purple	1x	538895
Red	1x	538894
Dark-orange	1x	538893
Orange	1x	538892

Brushes, hard

Disposable brushes for the application of liquid dental materials.



Delivery form

Refill	50x	533664
--------	-----	--------

Brushes, soft

Disposable brushes for the application of low-viscosity dental materials.



Delivery form

Refill	50x	533670
--------	-----	--------

Vivabrush

Disposable application aid for varnishes, gels, and sealants (to mount on brush holder).



Delivery form

Refill	50x	550430
---------------	------------	---------------

VivaBrush G

Disposable application aid



Delivery form

Refill	50x	631170
---------------	------------	---------------

Vivadent® Applicator

Disposable brushes for the activation of the Excite single-dose unit and the application of liquid and low-viscosity dental materials.

Available in 3 sizes/shapes:

- Regular (blue) for normal restorations
- Small (violet) for micro-cavities
- White



Delivery forms

Applicator

Regular	50x	631699
Small	25x	562168
White	50x	603949

Cannulas

Application tips for syringes and bottles.



Delivery forms

VivaPen Snap-on Cannulas for AdheSE One F, ExcITE F	100x	627178
Application tips for Email Preparator blue	20x	533666
Application tips for Total Etch	20x	550587
Application tips for Heliobond/Helioseal bottles	20x	533669
Application tips ø 1.1 mm for Tetric EvoFlow	20x	597315
Application tips ø 0.9 mm for Heliomolar Flow	20x	5567744
Application tips ø 0.6 mm for Helioseal F	20x	579862
Application tips ø 0.4 mm for Helioseal Clear, Tetric Color	20x	556745
Application tips for Variolink II	20x	559224
Application tips Redesign ø 0.4 mm for IPS Empress Direct Color, Helioseal Clear	20x	634847
Application tips Redesign ø 0.6 mm for Helioseal F	20x	634819
Application tips Redesign ø 0.9 mm for IPS Empress Direct Flow, IPS Empress Direct Opaque	20x	634849

Ivoclar Vivadent – worldwide

Ivoclar Vivadent AG

Bendererstrasse 2
FL-9494 Schaan
Liechtenstein
Tel. +423 235 35 35
Fax +423 235 33 60
www.ivoclarvivadent.com

Ivoclar Vivadent Pty. Ltd.

1 – 5 Overseas Drive
P.O. Box 367
Noble Park, Vic. 3174
Australia
Tel. +61 3 979 595 99
Fax +61 3 979 596 45
www.ivoclarvivadent.com.au

Ivoclar Vivadent GmbH

Bremschlstr. 16
Postfach 223
A-6706 Bürs
Austria
Tel. +43 5552 624 49
Fax +43 5552 675 15
www.ivoclarvivadent.com

Ivoclar Vivadent Ltda.

Rua Geraldo Flausino Gomes,
78 – 6.º andar Cjs. 61/62
Bairro: Brooklin Novo
CEP: 04575-060 São Paulo – SP
Brazil
Tel. +55 11 3466 0800
Fax +55 11 3466 0840
www.ivoclarvivadent.com.br

Ivoclar Vivadent Inc.

2785 Skymark Avenue, Unit 1
Mississauga
Ontario L4W 4Y3
Canada
Tel. +1 905 238 5700
Fax +1 905 238 5711
www.ivoclarvivadent.com

Ivoclar Vivadent Marketing Ltd.

Rm 603 Kuen Yang
International Business Plaza
No. 798 Zhao Jia Bang Road
Shanghai 200030
China
Tel. +86 21 5456 0776
Fax +86 21 6445 1561
www.ivoclarvivadent.com

Ivoclar Vivadent Marketing Ltd.

Calle 134 No. 7-B-83, Of. 520
Bogotá
Colombia
Tel. +57 1 627 33 99
Fax +57 1 633 16 63
www.ivoclarvivadent.com

Ivoclar Vivadent SAS

B.P. 118
F-74410 Saint-Jorioz
France
Tel. +33 450 88 64 00
Fax +33 450 68 91 52
www.ivoclarvivadent.fr

Ivoclar Vivadent GmbH

Dr. Adolf-Schneider-Str. 2
D-73479 Ellwangen, Jagst
Germany
Tel. +49 (0) 79 61 / 8 89-0
Fax +49 (0) 79 61 / 63 26
www.ivoclarvivadent.de

Ivoclar Vivadent Marketing Ltd.

(Liaison Office)
503/504 Raheja Plaza
15 B Shah Industrial Estate
Veera Desai Road, Andheri (West)
Mumbai, 400 053
India
Tel. +91 (22) 2673 0302
Fax +91 (22) 2673 0301
www.ivoclarvivadent.com

Ivoclar Vivadent s.r.l.

Via Gustav Flora, 32
39025 Naturno (BZ)
Italy
Tel. +39 0473 67 01 11
Fax +39 0473 66 77 80
www.ivoclarvivadent.it

Ivoclar Vivadent K.K.

1-28-24-4F Hongo
Bunkyo-ku
Tokyo 113-0033
Japan
Tel. +81 3 6903 3535
Fax +81 3 5844 3657
www.ivoclarvivadent.jp

Ivoclar Vivadent S.A. de C.V.

Av. Insurgentes Sur No. 863
Piso 14, Col. Napoles
03810 México, D.F.
México
Tel. +52 (55) 50 62 10 00
Fax +52 (55) 50 62 10 29
www.ivoclarvivadent.com.mx

Ivoclar Vivadent Ltd.

12 Omega St, Albany
PO Box 5243 Wellesley St
Auckland, New Zealand
Tel. +64 9 914 9999
Fax +64 9 814 9990
www.ivoclarvivadent.co.nz

Ivoclar Vivadent Polska Sp. z o.o.

Al. Jana Pawla II 78
00-175 Warszawa
Poland
Tel. +48 22 635 54 96
Fax +48 22 635 54 69
www.ivoclarvivadent.pl

Ivoclar Vivadent Marketing Ltd.

Derbenevskaja Nabereshnaya 11, Geb. W
115114 Moscow
Russia
Tel. +7 495 913 66 19
Fax +7 495 913 66 15
www.ivoclarvivadent.ru

Ivoclar Vivadent Marketing Ltd.

171 Chin Swee Road
#02-01 San Centre
Singapore 169877
Tel. +65 6535 6775
Fax +65 6535 4991
www.ivoclarvivadent.com

Ivoclar Vivadent S.L.U.

c/ Emilio Muñoz Nº 15
Entrada c/ Albarracin
E-28037 Madrid
Spain
Tel. + 34 91 375 78 20
Fax + 34 91 375 78 38
www.ivoclarvivadent.es

Ivoclar Vivadent AB

Dalvägen 14
S-169 56 Solna
Sweden
Tel. +46 (0) 8 514 93 930
Fax +46 (0) 8 514 93 940
www.ivoclarvivadent.se

Ivoclar Vivadent Liaison Office

Ahi Evran Caddesi No 1
Polaris Is Merkezi Kat: 7
80670 Maslak
Istanbul
Turkey
Tel. +90 212 346 04 04
Fax +90 212 346 04 24
www.ivoclarvivadent.com

Ivoclar Vivadent Limited

Ground Floor Compass Building
Feldspar Close
Warrens Business Park
Enderby
Leicester LE19 4SE
United Kingdom
Tel. +44 116 284 78 80
Fax +44 116 284 78 81
www.ivoclarvivadent.com

Ivoclar Vivadent, Inc.

175 Pineview Drive
Amherst, N.Y. 14228
USA
Tel. +1 800 533 6825
Fax +1 716 691 2285
www.ivoclarvivadent.com

