



Developer and producer of (customer-specific)
dental materials for more than a century

www.morsa-dental.de · info@morsa.de





For more than a century we at **MORSA GmbH GERMANY** have produced dental materials that meet the most demanding expectations when it comes to quality and reliability. We are an innovative enterprise whose different departments are run by expert specialists.

Since that long time we have sold our products over distributors in more than 60 countries worldwide based on the principles of stability and accountability.

As a prominent player in the worldwide OEM market we manufacture private label products for suppliers all over the world since many decades. We are ready to expand our international engagement with competent dealers who will sell our excellent quality products as their private label.

Our **main production facility, company headquarters** and distribution center is situated in **Krumbach (Germany)** not far from Munich with production cover approximately 4100 m² of space.

MORSA manufactures a large range of dental products & materials for both the dental laboratory and dentists, including modeling wax, base plates, sprue waxes, silicones, CAD CAM Blanks and much more for:

- prosthetics
- CAD CAM Blanks
- Casting technique
- Model casting
- Crowns and Bridges
- Dublication technique
- Work preparation etc.

We produce waxes and other materials also for different other branches, for example for **orthopaedics, epithetics, investment casting industry and for technical applications.**



Quality and control:

Based on modern **quality management systems** our production is subject to strong quality control with continuous improvements in production processes and efficiency. Our own, well-equipped production plant, R&D department and control and research laboratory contribute to an enormous development potential of which you can also benefit from.

The high quality of **MORSA** products and raw input material is furthermore controlled in our own laboratory. In addition in our modern research and **quality control department of MORSA**. Dental new product lines have been created and special methods for finest filtering of the raw material has been developed to top the increasing quality requests in this field. MORSA products are manufactured to ISO 13485:2003 and to ISO 9001:2008.

Because of this **MORSA** has gained international reputation for **exceptional quality, reliability and innovation.**

Yours **MORSA**

New parameter for assessing MORSA waxes

Due to the ever increasing demands on dental waxes, we have given our range of waxes additional technical parameter, e.g. average setting point, melting point, dropping point, ash content, penetration. In particular the ash content of the wax gives the user important information on whether the wax has the ability to combust without leaving a residue. The lower the penetration value, the harder the wax.

Contents

1.	CAD / CAM Materials	4	4.	Metal denture base wax	16
1.1	CAD / CAM Wax Discs	4	4.1	Metal denture base sculpting wax	16
1.2	PMMA Cast Discs	5	4.2	Modelling wax cyclindre	16
1.3	PMMA milling blanks for crowns and bridges	5	4.3	Metall denture wax sheets	16
2.	Full and Partial Denture Prosthetics	6	4.4	Clasp wax	16
2.1	Pink Sheet Waxes	6	4.5	Mesh retention	17
2.1.1	Sheet wax Special	6	4.6	Perforated wax retainer	17
2.1.2	Sheet wax Top-Techno	6	4.7	Wax templates	17
2.1.3	Sheet wax Extra Hard Super	7	4.7.1	Molar clasps	17
2.1.4	Sheet wax 1184	7	4.7.2	Premolars	17
2.1.5	Sheet wax Futur	7	4.7.3	Bonyhard	17
2.1.6	Sheet wax Euro	8	4.7.4	Ring clasps	17
2.1.7	Modelling wax Standard	8	5.	Sprue wax	18
2.2	Further types of prosthetic waxes	9	5.1	Duroflex Sprue Wax	18
2.2.1	Bite registration wax in rods	9	5.2	Casting wax sticks	18
2.2.2	Occlusal rim wax in rods	9	5.3	Triangle wax casting sprues	18
2.2.3	Occlusal rims, preformed	10	5.4	Wax casting sticks with reservoir	19
2.3	Alu bite registration sheets	11	5.5	Sprue wax casting channels	19
2.4	Functional edge and impression tray extension wax	11	5.6	Orthodontic wax	19
2.5	Boxing wax	11	5.7	Preparation wax	19
2.6	Setting / Mounting wax	11	5.8	MORSA - Wax pontics	20
2.7	MORSA sticky wax	12	5.8.1	MC BL Pre-molded wax pontics for metal ceramic works	20
2.8	Original Friese sticky wax in rods and discs	12	5.8.2	MC I Pre-molded individual wax patterns for metal ceramic works	20
2.9	Adhesive wax	12	6.	Additional Products for the Dental Laboratory	21
3.	Crown and bridge technique	13	6.1	MORSA Plaster	21
3.1	Crown waxes	13	6.1.1	MORSA ALPINE Plaster	21
3.2	Inlay waxes	13	6.1.2	MORSA PREMIUM Stone	21
3.3	Modelling Wax set		6.1.3	MORSA - Filmspray	21
3.4	Milling wax	14	6.2	MORSA - Tray plates – light curing	22
3.5	Cervical wax	14	6.3	MORSA - Reinforcing Net	22
3.6	Blocking-out wax	14	6.4	MORSA - Silicone	22
3.7	Aesthetic wax	15	6.5	MORSA - Shellac base plates	22
3.8	CAD / CAM Modelling-scan wax	15	6.6	MORSA - Electrowaxer	23
3.9	Stabilo Dipping wax / Elastic dipping wax	15	6.7	MORSA - Dip plus – Dipping wax unit – blue	23
			6.8	MORSA - Wax Brush	23
			6.9	MORSA - Wax knives	23
			7.	Promotional Articles	24

1. CAD / CAM Materials

1.1 CAD / CAM Wax Discs

Wax Discs are synthetic wax blanks for the fabrication of wax models. These special wax discs are not intended for intra-oral use! They burn out without trace. For up to 30 units. The material can be used to make frameworks for crown and bridge models. These models can be used in the lost wax process when casting, when making dental restorations.

Properties:

Chem. composition:	synthetic wax
Colour:	White opaque / grey
Solubility in water:	not soluble
Drop melting point:	100 - 130 °C
Density:	0,97 g/cm ³
Odour:	odourless



Order no. DR 000 900 HD 830-20	white	98,5 x 20 mm	1 piece
Order no. DR 000 950 HD 830-20	grey	98,5 x 20 mm	1 piece
Order no. DR 000 970 HD 830-20	blue	98,5 x 20 mm	1 piece



casted bridge

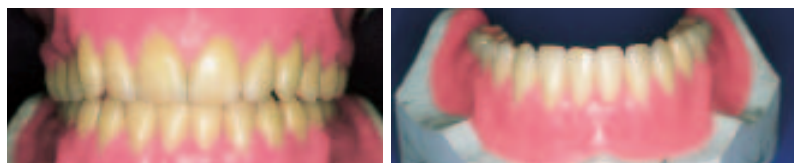


2. Full and partial denture prosthetics

2.1 Pink Sheet Waxes (Set-up wax / modelling wax / baseplate wax)

All sheet waxes are fully combustible:

Ash Content: 0.000-0.005



2.1.1 Modelling wax Special

High quality elastic plate wax for the whole resin prosthetics. Composition based on a perfect combination of microwaxes, paraffin, natural waxes and bee's waxes. High edge and breaking stability as well as extremely low thermal contraction. It can be modeled and cut very well

- the top-selling MORSA sheet wax
- made from the best raw materials - very high bees' wax content
- two different seasonal qualities for summer and winter
- two different sheet thicknesses 1.25 mm and 1.5 mm
- pleasant elastic quality during processing
- low degree of thermal contraction when cooling down
- no risk of unintentional changes in the set-up
- precise reproductive accuracy
- good wax-up characteristics
- high strength
- setting point: 59 °C for summer wax / ash content 0.002
- setting point: 57 °C for winter wax / ash content: 0.000
- sheet size: 175 x 80 x 1.25 mm and 175 x 80 x 1.5 mm
- available in 500 g / 2.500 g

CE



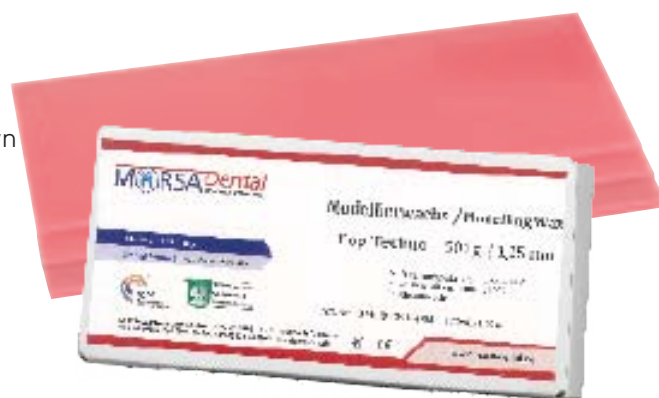
Order no. DM 000 106 VA 804	Summer	175 x 80 x 1.25 mm	500 g
Order no. DM 000 108 VA 804	Summer	175 x 80 x 1.50 mm	500 g
Order no. DM 000 102 VA 804	Summer	175 x 80 x 1.25 mm	2.5 kg
Order no. DM 000 104 VA 804	Summer	175 x 80 x 1.50 mm	2.5 kg
Order no. DM 000 107 VA 804	Winter	175 x 80 x 1.25 mm	500 g
Order no. DM 000 109 VA 804	Winter	175 x 80 x 1.50 mm	500 g
Order no. DM 000 103 VA 804	Winter	175 x 80 x 1.25 mm	2.5 kg
Order no. DM 000 105 VA 804	Winter	175 x 80 x 1.50 mm	2.5 kg

2.1.2 Sheet wax Top-Techno

High-grade all-round plate wax. Harder than special summer. Light elasticity and light adhesiveness during fixing teeth.

- **Especially cost-effective**
- All-round wax for the entire range of prosthodontics
- quick to set after application
- pleasantly elastic during processing
- low degree of thermal contraction when cooling down
- no risk of unintentional changes in the set-up
- precise reproductive accuracy
- good wax-up characteristics
- high strength
- setting point: 59 °C / ash content: 0.002
- sheet size: 175 x 80 x 1.25 mm
- available in 500 g / 2.500 g

CE



Order no. DM 000 129 VA 804	175 x 80 x 1.25 mm	500 g
Order no. DM 000 130 VA 804	175 x 80 x 1.25 mm	2.5 kg

2. Full and partial denture prosthetics

2.1.3 Baseplate wax Extra Hard Super

is a high temperature stability modelling wax. This wax is comfortable to model because it is stiff but not brittle and can be well cut without distortions

- the ideal summer wax even at high temperatures
- quick to set after application
- pleasantly elastic during processing
- low degree of thermal contraction when cooling down
- no risk of unintentional changes in the set-up
- precise reproductive accuracy
- good wax-up characteristics
- high strength
- setting point: 65° C / ash content: 0.000
- sheet size: 175 x 80 x 1.25 mm
- available in 500 g



Practical advice from master dental technician Kurtz, Germany:
Ideal for quick, preliminary set-ups, e.g. on cast partial dentures and telescope restorations.

Order no. DM 000 101 VA 804

175 x 80 x 1.25 mm

500 g

2.1.4 Sheet cast wax 1184

Red and hard quality
very opaque



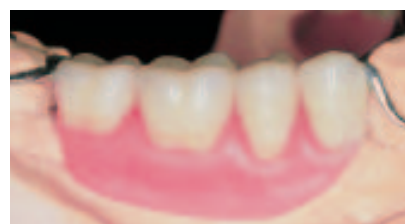
Order no. DM 000 199 VA 804

175 x 80 x 2.00 mm

ca. 2.5 kg

2.1.5 Sheet wax Future

- Best quality wax, suitable for the entire range of prosthodontics
- high bees wax content
- two different sheet thickness 1.25 mm and 2 mm
- very cost-effective
- quick to set after application
- pleasantly elastic during processing
- low degree of thermal contraction when cooling down
- no risk of unintentional changes in the set-up
- precise reproductive accuracy
- good wax-up characteristics
- high strength
- setting point: 59° C / ash content: 0.004
- sheet size: 175 x 80 x 1.25 mm
- available in 500 g / 2.500 g



Practical advice from master dental technician J. Miller, Augsburg, Germany: Ideal for try-ins due to colour and stability.

Order no. DM 000 133 VA 804

175 x 80 x 1.25 mm

500 g

Order no. DM 000 134 VA 804

175 x 80 x 1.25 mm

2.5 kg

Order no. DM 000 135 VA 804

175 x 80 x 2.00 mm

500 g

Order no. DM 000 136 VA 804

175 x 80 x 2.00 mm

2.5 kg

2. Full and partial denture prosthetics

2.1.6 Set-up wax Euro

This softer wax is very easy to model and cut. Very elastic and plastic quality. During shaping EURO does not reset and offers a high adhesive strength without sticking. Versatile wax for resin prosthetics.

- High modelling capability
- Edge stable
- Elastic and plastic
- All-round wax für the entire range of prosthodontics
- quick to set after application
- low degree of thermal contraction when cooling down
- no risk of unintentional changes in the set-up
- good wax-up characteristics
- setting point: 55° C / ash content: 0.000
- sheet size: 175 x 80 x 1.25 mm
- available in 500 g



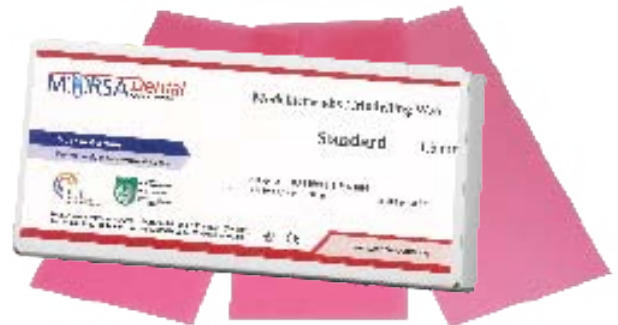
Order no. DM 000 123 VA 804	175 x 80 x 1.25 mm	500 g
Order no. DM 000 124 VA 804	175 x 80 x 1.25 mm	2.5 kg

2.1.7 Modelling wax Standard

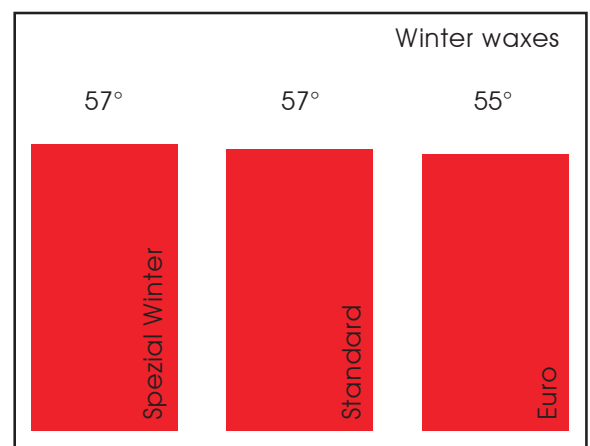
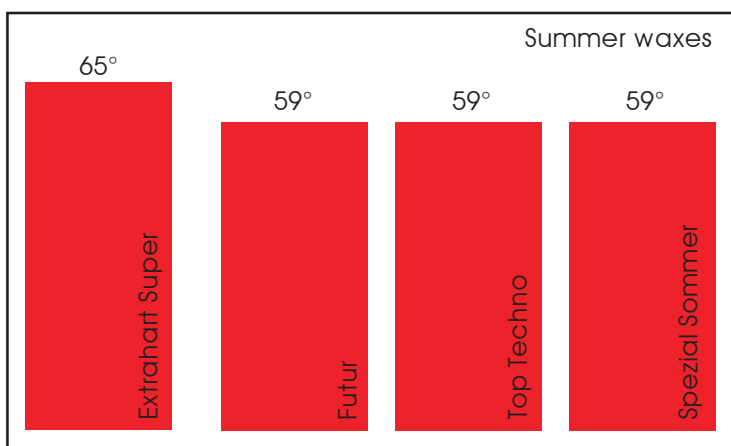
Very cost effective all-round modelling wax.

NEW

- Setting point: 57 °C
- ash content: 0.005
- sheet size: 175 x 80 x 1.25 mm
- available in 500 g / 2.500 g



Order no. DM 000 138 VA 804	175 x 80 x 1.25 mm	500 g
Order no. DM 000 139 VA 804	175 x 80 x 1.25 mm	2.5 kg



Pink sheet waxes arranged in the order of their average setting point.

2. Full and partial denture prosthetics

2.2 Further types of prosthetic waxes

2.2.1 Bite registration wax in rods

- for the production of partial occlusal rims
- for placing onto partial metal denture saddles
- for accurate bite registration
- on warming, as tough as bees' wax
- stable after cooling
- simplified visual control due to opaque colours
- available in three different hardnesses and three colours
- yellow = soft, penetration: 30
- rose = medium hardness, penetration: 25
- pink = hard, penetration: 23
- 108 x 10 x 10 mm
- available in 490 g / 1.850 g



Order no. DB 000 101 AU 803	yellow (soft)	108 x 10 x 10 mm	490 g
Order no. DB 000 201 AU 803	yellow (soft)	108 x 10 x 10 mm	1.850 g
Order no. DB 000 102 AU 804	red (medium hardness)	108 x 10 x 10 mm	490 g
Order no. DB 000 202 AU 804	red (medium hardness)	108 x 10 x 10 mm	1.850 g
Order no. DB 000 103 AU 805	pink (hard)	108 x 10 x 10 mm	490 g
Order no. DB 000 203 AU 805	pink (hard)	108 x 10 x 10 mm	1.850 g



2.2.2 Occlusal rim wax in rods

- for the production of full occlusal rims
- for placing onto partial metal denture saddles
- for accurate bite registration
- on warming, as tough as bees' wax
- stable after cooling
- simplified visual control due to opaque colours
- available in three different hardnesses and three colours:
- yellow = soft, penetration: 30
- rose = medium hardness, penetration: 25
- pink = hard, penetration: 23
- 108 x 10 x 10 mm
- available in 2.000 g

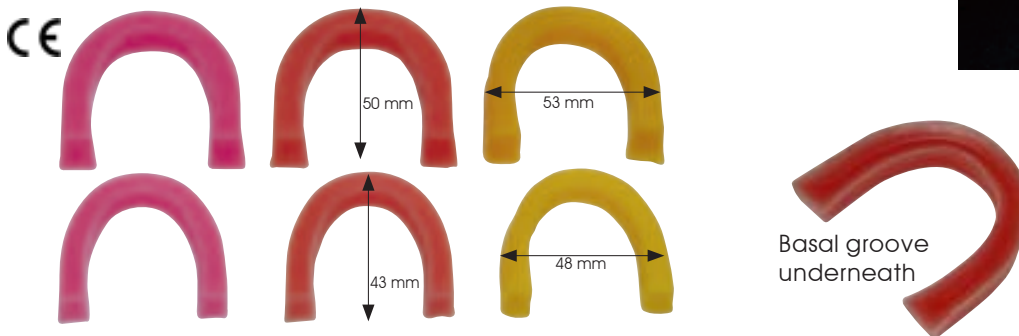
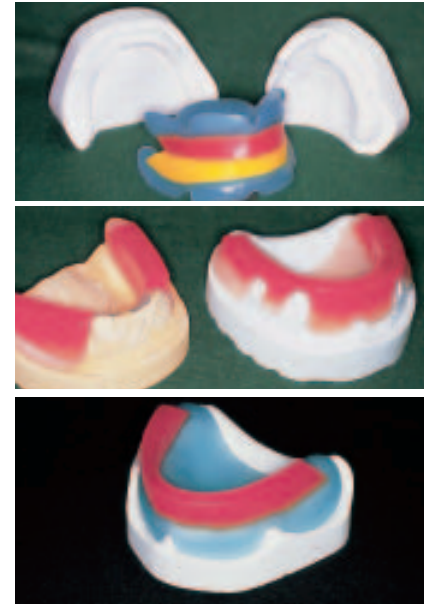


Order no. DB 000 105 AU 803	yellow (soft)	180 x 10 x 10 mm	500 g
Order no. DB 000 106 AU 804	rose (medium hardness)	180 x 10 x 10 mm	2.0 kg
Order no. DB 000 107 AU 805	pink (hard)	180 x 10 x 10 mm	2.0 kg

2. Full and partial denture prosthetics

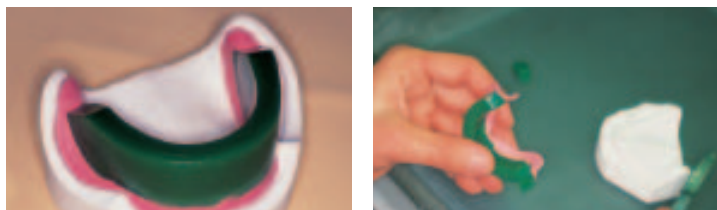
2.2.3 Occlusal rims, preformed (horse shoe shaped)

- for the production of full occlusal rims
- preformed dental arches
- no more time consuming re-shaping of preformed party required
- Optimal fit on the alveolar ridge due to basal groove
- the slanted ends prevent precontact and therefore the urge to gag
- quickly adaptable to every oral situation
- quick and easy to re-shape when in a warmed state
- form stability after cooling guarantees accurate bite registration
- simplified visual control due to opaque colours
- available in three hardnesses and three colours:
 - soft = yellow penetration: 30
 - medium hardness = rose penetration: 25
 - hard = pink penetration: 23
- available in two sizes each with 100 pcs.
- small rim = Standard: height 10 mm, length 43 mm, width 48 mm
- large rim = Standard: height 12 mm, length 50 mm, width 53 mm

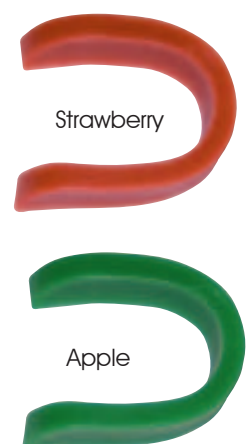


Order no. DB 000 112 AU 803	small	yellow (soft)	100 pcs.
Order no. DB 000 113 AU 803	large	yellow (soft)	100 pcs.
Order no. DB 000 114 AU 804	small	red (medium hardness)	100 pcs.
Order no. DB 000 115 AU 804	large	red (medium hardness)	100 pcs.
Order no. DB 000 116 AU 805	small	pink (hard)	100 pcs.
Order no. DB 000 117 AU 805	large	pink (hard)	100 pcs.

- available in two hardnesses and two different flavours:
- strawberry flavour = red, penetration: 28
- apple flavour = green, penetration: 28
- available in 100 pcs.



CE



Order no. DB 000 116 AU 813	small	green (apple)	100 pcs.
Order no. DB 000 117 AU 813	large	green (apple)	100 pcs.
Order no. DB 000 118 AU 805	small	red (strawberry)	100 pcs.
Order no. DB 000 119 AU 805	large	red (strawberry)	100 pcs.

2. Full and partial denture prosthetics

2.3 Alu bite registration sheets

- a hard bite registration wax
- for precise bite registrations
- clearly recognisable impression
- stable wax sheets (2 mm thickness) with a high aluminium content
- process in a warmed state
- heat up in warm water or using a Bunsen burner
- colour: silver
- setting point: 22 °C, penetration: 18
- sheet size: 175 x 80 x 2 mm
- available in 12 sheets / 200 g

CE



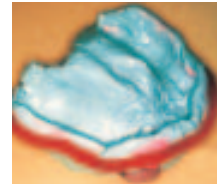
Order no. DB 000 104 HA 806	silver	175 x 80 x 2,5 mm	250 g
Order no. DB 000 144 HA 806	preshaped metallised wax shapes for bite registrations		20 pcs. / box

2.4 Functional edge and impression tray extension wax / periphery wax / utility wax

used for protecting and preserving the peripheral roll in removable prosthetics. The application of utility wax on the impression tray allows a perfect transfer of the peripheral roll from the impression onto the model. The wax is very pliable at room temperature.

- high degree of plasticity
- exact dorsal dam
- adequately adhesive
- melting point: 70 - 74 °C
- dimensions: ø 5 mm, 185 mm long
- available in 32 sticks / 110 g

CE



Order no. DR 000 106 AU 807	scarlet	ø 5 mm, 185 mm long	110 g
-----------------------------	---------	---------------------	-------

2.5 Boxing wax

- for boxing-in impressions prior to casting
- for extending the tray edges
- no heating-up required
- colourless
- available as sticks of 300 x 28 x 1 mm; Weight 500 g

CE



Order no. DR 000 104 HA 802	colourless	300 x 28 x 1 mm	500 g
-----------------------------	------------	-----------------	-------

2.6 Setting / Mounting wax

- for setting-up teeth in full and partial dentures
- no unintentional changes in the wax-up after cooling
- available in the colours red and black
- available in sheets with dimensions: 175 x 80 x 2,5 mm
- available as 500 g



Order no. DR 000 102 HA 802	red	175 x 80 x 2,5 mm	500 g
Order no. DR 000 101 HA 802	black	175 x 80 x 2,5 mm	500 g

2. Full and partial denture prosthetics

2.7 MORSA sticky wax

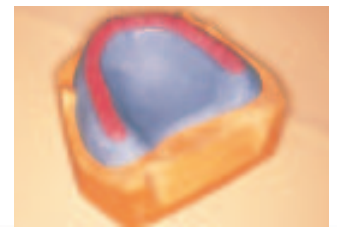
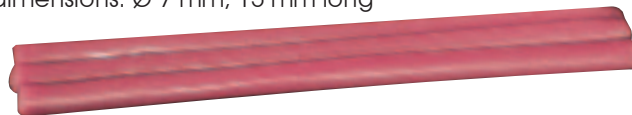
- universally applicable sticky wax for all areas of prosthodontics
- high adhesive strength
- hard, but not brittle
- elastic
- for the fixation of acrylic teeth in a matrix
- for the fixation of a matrix to a model
- joins base sheets to bite registrations
- colour: yellow and pink
- dimensions: 100 x 40 x 20 mm
- available as six bars at a total of 370 g
- Melting point: 64-66 °C



Order no. DK 000 400 HD 803	yellow	100 x 40 x 20 mm	370 g
Order no. DK 000 500 HD 804	pink	100 x 40 x 20 mm	370 g
Order no. DK 000 110 HD 803	yellow	discs	320 g
Order no. DK 000 111 HD 804	pink	discs	320 g

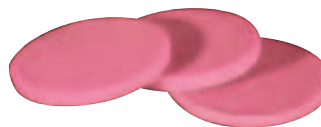
2.8 Original Friese sticky wax in rods and discs

- the classical sticky wax
- extremely high adhesive characteristics
- for the fixation of acrylic teeth in a matrix
- for the fixation of a matrix to a model
- joins base sheets to bite registrations
- very quick setting
- no risk of unintentional changes to the wax-up
- shape stability
- colour: rose
- packaged as 24 sticks, dimensions: Ø 7 mm, 15 mm long
- melting point: 59 - 63 °C



Order no. DK 000 107 AU 804	rose	ø 7 mm, 15 mm long	24 sticks
-----------------------------	------	--------------------	-----------

- available as ten discs, dimensions: Ø 75 mm, 8 mm thick
- available in packs of 1 kg discs



Order no. DK 000 112 HD 804	rose	ø 75 mm, 8 mm thick	10 discs
Order no. DK 000 105 HD 804	rose	ø 75 mm, 8 mm thick	1 kg

2.9 Adhesive Wax

For dentistry processes. For bonding together links of metal dentures prior to solder them. Wax composition based on natural resin und colophony.

Application instructions:

- heat up wax on a spatula above torch flame till it melts
- seal the joints of denture metal structures with wax by pouring it down from the spatula
- upon solidification, mold the denture metal links bonded together into refractory mass

- good adhesion to metal
- high strength
- easy-to-use shape
- dropping temperature: 65 °C
- ash content: ≤ 0,1 %

NEW

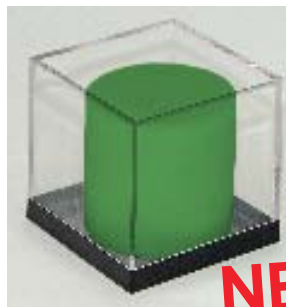


Order no. DK 000 120 HD 803	goldbrown	10 wax sticks	50 g
-----------------------------	-----------	---------------	------

3. Crown and bridge technique

3.1 Crown wax / Modelling wax

- the well-proven all-round crown wax for the crown and bridge technique
- very good characteristics for the preparation of wax-up and carving techniques
- opaque and intensive colouration of the waxes makes the contours in wax-ups easy to see
- very good wax-up qualities
- minimal shrinkage
- very good fitting accuracy
- easy to carve
- available in two colours: grey and dark green
- grey: setting point: 80,5 °C; ash content: 0.106
- dark green: setting point: 83,5 °C; ash content 0.000
- available in clip-clap tins of 50 g



NEW



Order no. DR 000 114 HD 813	dark green	50 g tin
Order no. DR 000 115 HD 814	grey	50 g tin
Order no. DR 000 150 HD 813	darkgreen	50 g cylindre

3.2 Inlay waxes

- for the fabrication of occlusal surfaces
- minimal contraction
- optimal stability
- good waxing qualities
- very good fitting accuracy
- easy to carve
- available in two colours
- grey and dark green
- grey: setting temperature: 79 °C;
- ash content: 0.006
- dark green: setting temperature: 73 °C;
- ash content: 0.002
- available in clip-clap tins of 50 g



Order no. DR 000 116 HD 813	dark green	50 g tin
Order no. DR 000 117 HD 814	grey	50 g tin

3.3 Modelling Wax Set

Set of modelling waxes for modelling of fixed whole-piece metal-ceramic and metal polymer dentures.

Application instructions:

- pick wax with a spatula, melt it above torch flame and apply wax onto the model drop by drop
- connect individual mounted components using melted wax
- material is easy to treat, using dentistry tools
- material is easy to model

NEW



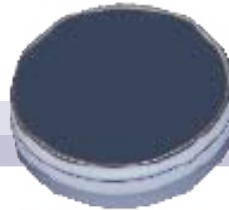
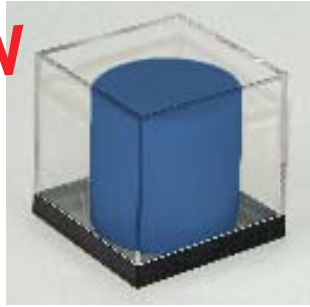
Order no. DR 000 160 HD 800	set: 2 red pieces, 6 blue pieces, 6 green pieces	14 pieces / 60 g
-----------------------------	--	------------------

3. Crown and bridge technique

3.4 Milling wax

- ideal for milling and carving
- chips cleanly
- produces smooth surfaces
- available in the colour blue
- Ash content: 0.002
- Setting point: 67 °C
- available in clip-clap tins of 50 g

NEW



Order no. DR 000 118 HD 800

blue

50 g tin

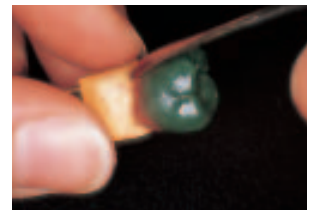
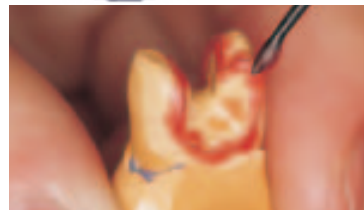
Order no. DR 000 151 HD 800

darkblue

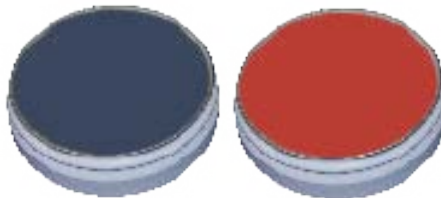
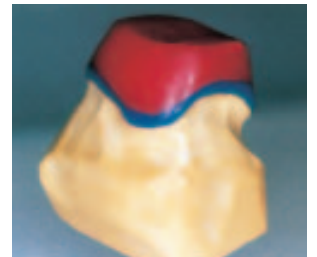
50 g cylindre

3.5 Cervical wax

- for accurately fitting margins
- ideal for edges of crowns due to stress free application and low setting shrinkage
- good adaptation
- available in the colours red and blue
- red: Setting point: 60 °C; Ash content: 0.035
- blue: Setting point: 64 °C; Ash content 0.02
- available in clip-clap tins of 50 g



NEW



Order no. DR 000 119 HD 805

red

50 g tin

Order no. DR 000 152 HD 805

red

50 g cylindre

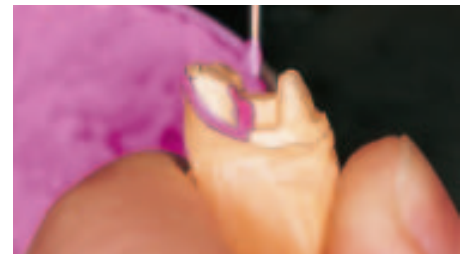
Order no. DR 000 120 HD 800

blue

50 g tin

3.6 Blocking-out wax / Undercutting wax

- Special wax for blocking-out cavities and rough surfaces
- high melting point: 78 - 81 °C
- extremely hard
- connects well with die lacquer
- used for blocking-out and making undercuts parallel in cast metal denture preparation
- adheres well to plaster models
- flows well into the smallest areas
- easy to carve
- adheres well
- easy to boil out
- opaque coloured contours are easily recognisable
- Setting point: 80 °C; Ash content: 0,058
- available in clip-clap tins of 50 g



Order no. DR 000 121 HD 815

pink

50 g tin

3. Crown and bridge technique

3.7 Aesthetic wax / Diagnostic wax

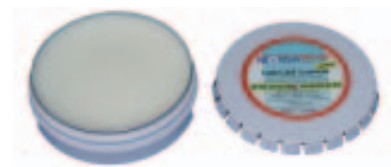
- burns without residue
 - for understanding and fabricating wax patterns or teeth in their natural shape and colour
 - low contraction
 - good flowing and carving characteristics
 - high surface density / opaque
 - the exact waxed pattern is immediately recognisable
 - the opaque colours enable the contours to be clearly visible
 - available in four colours from ivory to brown
- ivory: Setting point: 82 °C; Ash content: 0.127
 cream: Setting point: 85 °C; Ash content 0.077
 light brown: Setting point: 85 °C; Ash content: 0.160
 brown: Setting point: 80 °C; Ash content 0.003
- available in clip-clap tins of 50 g



Order no. DR 000 123 HD 809	ivory	50 g tin
Order no. DR 000 153 HD 809	ivory	50 g cylindre
Order no. DR 000 124 HD 810	cream	50 g tin
Order no. DR 000 125 HD 803	light brown	50 g tin
Order no. DR 000 126 HD 801	brown	50 g tin

3.8 CAD Cam Modelling - scan wax

For Scanner
 Very opaque



Order no. DR 000 400 HD 830	white	50 g tin
-----------------------------	-------	----------

3.9 Stabilo Dipping wax / Elastic dipping wax

- for the production of wax copings with an even walled thickness by dipping
 - no risk of unintentional distortion
 - available in the colours yellow and red
- red: Setting point: 71 °C; Ash content: 0.000
 yellow: Setting point: 69 °C; Ash content 0.002
- in granular form for quick, precise melting
 - available in a sprinkle tin of 300 g
 - available in an economy pack

New Quality: Very plastic dipping wax with good elastic memory and minimal contraction.
 Recommended working temperature 75 - 85 °C. 200 g.



Order no. DR 000 137 HD 803	Stabilo-Dipping wax, yellow	300 g sprinkle tin
Order no. DR 000 140 HD 803	Elastic Dipping wax, pink	200 g sprinkle tin

4. Metal denture base wax

4.1 Metal denture base sculpting wax

- ideal for connecting all wax and plastic pre-fabricated parts when fabricating a metal denture base
- available in dark blue;
Setting point: 60 °C; Ash content: 0,002
- available in clip-clap tins of 50 g



Order no. DG 000 108 HD 800

blue

50 g tin

4.2 Modelling wax cylindre

Wax for clasp prosthesis. Connecting of wax components of clasp prosthesis construction.

Application instructions:

- connection of wax elements of clasp prosthesis is carried out using standard methods of dental practice
- highly adhesive to fire-resistant model
- possesses good fluidity, holds a drop well
- melting point: 73 (+/-3) °C
- ash content: ≤ 0,005 %
- colour: blue



NEW

Order no. DG 000 109 HD 800

blue

cylindre, 25 g

4.3 Metal denture wax sheets

- the transparency of the sheets allows markings on the model to be seen
- good adaptation
- secure adherence to model during duplication
- shape stability
- available in structured, green casting wax sheet: finely veined and coarsely veined in various thicknesses: from 0.3 to 0.6 mm
- Sheet size 175 x 80 mm
- available as 15 sheets



Best.-Nr. DH 000 124 NB 813	finely veined green	150 x 75 x 0,30 mm	Best.-Nr. DH 000 144 NB 813	coarsely veined green	150 x 75 x 0,30 mm
Best.-Nr. DH 000 126 NB 813		150 x 75 x 0,40 mm	Best.-Nr. DH 000 145 NB 813		150 x 75 x 0,40 mm
Best.-Nr. DH 000 127 NB 813		150 x 75 x 0,50 mm	Best.-Nr. DH 000 146 NB 813		150 x 75 x 0,50 mm
Best.-Nr. DH 000 128 NB 813		150 x 75 x 0,60 mm	Best.-Nr. DH 000 147 NB 813		150 x 75 x 0,60 mm
Best.-Nr. DH 000 160 NB 813	smooth green	150 x 75 x 0,30 mm	Best.-Nr. DH 000 162 NB 813	smooth green	150 x 75 x 0,50 mm
Best.-Nr. DH 000 161 NB 813		150 x 75 x 0,40 mm	Best.-Nr. DH 000 163 NB 813		150 x 75 x 0,60 mm

4.4 Clasp Wax

Paraffin-ceresin alloy. For formation of intermediate spaces in modelling of clasp denture frameworks.

Application instructions:

- heat a wax plate above torch flame or in warm water (40 – 50 °C), place the plate on the model and mold it
- material has high plasticity properties
- material is easy to mold on the model
- material is easy to treat
- patterned plates imitate macro and micro contours of hard palate mucous membrane
- available in two sizes: no. 1 / 40 g, no. 2 / 60 g

NEW



Order no. DG 000 120 HD 804

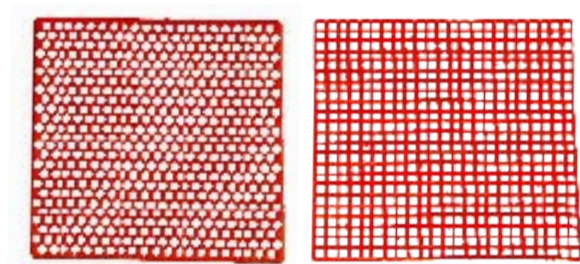
rose

2 sizes 100 g

4. Metal denture base wax

4.5 Mesh retention

- adheres very well to the model
- easy to adapt
- dimensionally stable - easy to shape
- universal mesh structure for the best retention results
- dimensions: 40 x 60 mm
- available in 25 layers
- colour: red
- available in 2.500 g



Order no. DH 000 119 NB 805	red, grid mesh	20 layers
Order no. DH 000 220 NB 805	red, round holes	20 layers

4.6 Perforated wax retainer

- for the retentive areas in lower and upper metal dentures
- good stability
- high plasticity
- adheres well to refractory models
- available as 25 bars
- colour: red

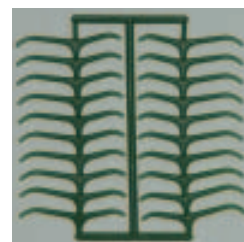


Order no. DH 000 122 NB 805	red	25 bars
-----------------------------	-----	---------

4.7 Wax templates

4.7.1 Molar clasps

- adheres well to model
- easy to adapt
- dimensionally stable - easy to shape
- available in 10 layers
- colour: green



Order no. DH 000 115 NB 813	green	10 layers
-----------------------------	-------	-----------

4.7.2 Premolars

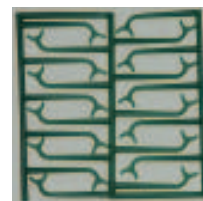
- adheres well to model
- easy to adapt
- dimensionally stable - easy to shape
- available in 10 layers
- colour: green



Order no. DH 000 116 NB 813	green	10 layers
-----------------------------	-------	-----------

4.7.3 Bonyhard

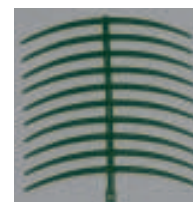
- adheres well to model
- easy to adapt
- dimensionally stable - easy to shape
- available in 10 layers
- colour: green



Order no. DH 000 117 NB 813	green	10 layers
-----------------------------	-------	-----------

4.7.4 Ring clasps

- adheres well to model
- easy to adapt
- dimensionally stable - easy to shape
- available in 10 layers
- colour: green



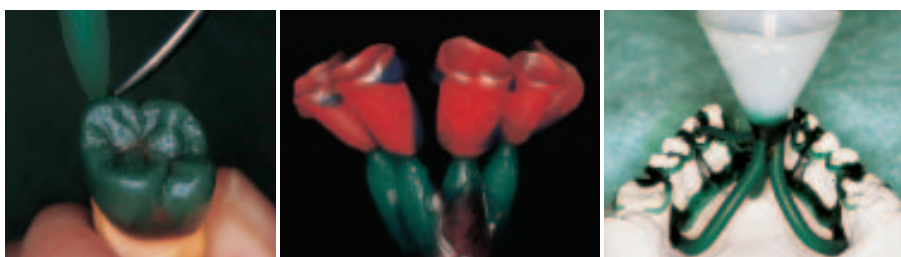
Order no. DH 000 118 NB 813	green	10 layers
-----------------------------	-------	-----------

5. Sprue wax

5.1 DUROFLEX Sprue Wax

Tension-free and very malleable wax wire. Due to its high stability it may be waxed onto any object easily. Prevents accidental deformation of objects to be cast. Packaging: reel 250 g

- stress-free
- elastic
- high strength
- no risk of unintentional distortion of casting objects
- available in two hardnesses and colours:
- green = medium hardness
- blue = hard
- available in the thicknesses from 3.0 to 5.0 mm
- packaged individually at 250 g



Order no. DH 000 130 NB 813	green	reel	2.0 mm	Order no. DH 000 140 NB 814	blue	reel	2.0 mm
Order no. DH 000 131 NB 813	green	reel	3.0 mm	Order no. DH 000 141 NB 814	blue	reel	3.0 mm
Order no. DH 000 132 NB 813	green	reel	3.5 mm	Order no. DH 000 142 NB 814	blue	reel	3.5 mm
Order no. DH 000 133 NB 813	green	reel	4.0 mm	Order no. DH 000 143 NB 814	blue	reel	4.0 mm
Order no. DH 000 134 NB 813	green	reel	5.0 mm	Order no. DH 000 144 NB 814	blue	reel	5.0 mm

Turquoise: extra hard. This wax wire is suitable not only for warmer seasons but also for the warmer climatic zones.

NEW Order no. DH 000 151 NB 814	turquoise	reel	2.0 mm	Order no. DH 000 153 NB 814	turquoise	reel	3.5 mm
Order no. DH 000 150 NB 814	turquoise	reel	2,5 mm	Order no. DH 000 154 NB 814	turquoise	reel	4.0 mm
Order no. DH 000 152 NB 814	turquoise	reel	3.0 mm	Order no. DH 000 155 NB 814	turquoise	reel	5.0 mm

5.2 Casting wax sticks

For the formation of a feed-gate system when molding clasp denture frameworks directly on refractory models

Application instructions:

- melt wax in muffle furnaces with temperature being gradually increased from 60 to 200 °C within an hour
- do not use open flame to melt the sticks

NEW

- sticks are flexible over 20 – 30 °C range and therefore can be laid unheated to a model zone at any angle
- sticks are easy to connect with wax models
- sticks are used to produce strong soldered connections
- sticks are available in 4 sizes:
No. 1: 120 x 2 mm, 10 sticks; No. 2: 120 x 3 mm, 30 sticks; No. 3: 120 x 4,5 mm, 10 sticks; No. 4: 75,0 x 9 mm, 26 sticks



Order no. DG 000 130 HD 800	4 sizes	26 sticks / 150 g
-----------------------------	---------	-------------------

5.3 Triangle wax casting sprues

- Preformed sprues permit the exact positioning of the wax patterns around the casting ring's center.
- The roundish shape of the casting sprues prevents the creation of sharp edges. In this wax no investment residues can remain inside the metal.
- Due to their stability unintentional deformation is avoided, when removed from the model.



Order no. DH S00 101 NB 815	casting sprues	100 units
-----------------------------	----------------	-----------

5. Sprue wax

5.4 Wax casting sticks with reservoir

Five different sizes:

Order no. DH 000 204 NB 814	Head ø 4 mm, Pin ø 2.5 mm	200 units
Order no. DH 000 205 NB 814	Head ø 5 mm, Pin ø 3.0 mm	200 units
Order no. DH 000 206 NB 814	Head ø 6 mm, Pin ø 3.5 mm	150 units
Order no. DH 000 207 NB 814	Head ø 7 mm, Pin ø 3.5 mm	150 units
Order no. DH 000 208 NB 814	Head ø 8 mm, Pin ø 4.0 mm	100 units



5.5 Sprue wax casting channels



Order no. DRS H0040	red	ø 5 mm rods	453 g package
---------------------	-----	-------------	---------------

5.6 Orthodontic Wax (in transparent box)

transparent box made of crystal clear polystyrene filled with orthodontic wax.



Order no. DRS H0395			100 plastic kits/box
---------------------	--	--	----------------------

5.7 Preparation wax

It can be well adapted to the master model.
Suitable for casted partial dentures, before duplication of models.



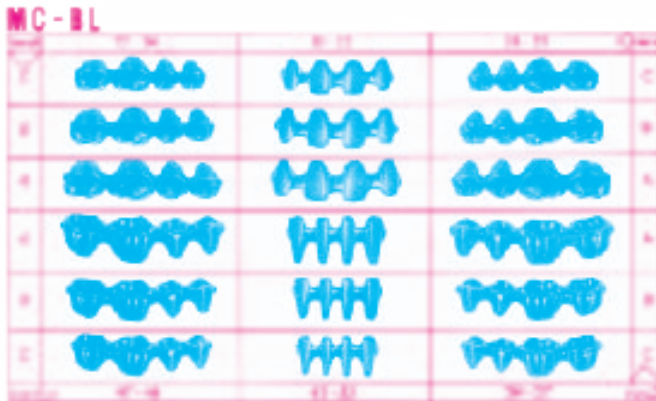
Order no. DR 000 100 VA 807	175 x 80 x 0.50 mm	200 g
Order no. DR 000 103 VA 807	175 x 80 x 0.70 mm	200 g



5. Sprue wax

5.8 Wax Pontics

5.8.1 MORSA MC BL Pre-molded wax pontics for metal ceramic works



- Perfect anatomical and physiological design.
- Wax patterns reduced by the thickness of the ceramic layer.
- Structured according to the natural tooth forms.
- Without final wax border - results better aesthetic.
- Time saving - makes elaborate modelling unnecessary.



Order no. MCB 000 90 NB 814	kit of 90 blocks (18 shapes - 5 blocks of each shape and size)
Order no. MCB 000 180 NB 814	kit of 180 blocks (18 shapes - 10 blocks of each shape and size)
Order no. MCB 000 360 NB 814	kit of 360 blocks (18 shapes - 20 blocks of each shape and size)

Replacement:

- Refill box of 25 blocks (according to shape and size).
- Refill box of 50 blocks (according to shape and size).
- Refill box of 100 blocks

5.8.2 MORSA MC I Pre-molded individual wax patterns for metal ceramic works



- Wax patterns reduced by the thickness of the ceramic layer
- Perfect anatomical and physiological design
- Without final wax border - results better aesthetic
- Structured according to the natural tooth forms
- Mesial and distal wax-up allows a tension-free connection between the wax parts



Order no. MCI 000 300 NB 814	set of 300 parts (60 shapes - 5 parts of each shape and size)
Order no. MCI 000 600 NB 814	set of 600 blocks (60 shapes - 10 parts of each shape and size)
Order no. MCI 00 1200 NB 814	set of 1200 blocks (60 shapes - 20 parts of each shape and size)

Replacement:

- Refill box of 25 parts (according to shape and size).
- Refill box of 50 parts (according to shape and size).
- Refill box of 100 parts (according to shape and size).

6. Additional Products for the Dental Laboratory

6.1 MORSA – Plaster

6.1.1 MORSA ALPIN: Plaster

A general hard plaster for prosthodontics (master and working models) Class 3 plaster, DIN EN 6873

Application instructions:

- Mixing ratio: 100 g powder = 30 ml distilled or demineralised water
- for all prosthetic models
- for working, situation and opposing models
- ideal for flasking models
- shortened working time
- very good flow characteristics
- smooth and homogenous surf

NEW



Technische Daten:

Brinell hardness after 2 hours (MPa; N/mm²): 100

Applies for a mixing ratio Brinell hardness after 24 hours (MPa; N/mm²): 110

Of 100 g: 30 ml) Compressive strength after 1 hour (MPa; N / mm²): 44 (6,380 psi)

Setting expansion (%): 0,15

Complete stability (min): 15 – 20

Working time (min):

Order no. DH 000 800 NB 803	goldbrown	5 kg
Order no. DH 000 801 NB 803	goldbrown	20 kg
Order no. DH 000 800 NB 814	lightblue	5 kg
Order no. DH 000 801 NB 814	lightblue	20 kg
Order no. DH 000 800 NB 809	white	5 kg
Order no. DH 000 801 NB 809	white	20 kg

6.1.2 MORSA Premium – Stone

Super hard stone, class IV, DIN EN ISO 6873

With a short working time for sectioned and master models for the crown and bridge, inlay and onlay and chrome technique

Technical Data:

(applies for a mixing ratio of 100 g : 20 ml and vacuum mixing)

Brinell hardness after 2 hours (MPa; N/mm²): 270

Brinell hardness after 24 hours (MPa; N/mm²): 290

Compressive strength after 1 hour (MPa; N / mm²): 60 (8,700 psi)

Setting expansion (%): 0,10

Complete stability (min): 30 - 40

Working time (min): 4,5 – 5,5

NEW



Order no. DH 000 810 HD 809	white	5 kg
Order no. DH 000 811 HD 809	white	20 kg
Order no. DH 000 810 HD 803	goldbrown	5 kg
Order no. DH 000 811 HD 803	goldbrown	20 kg

6.1.3. MORSA-Filmspray

Seperates wax from stone and wax from metal. Thin coat renders excellent insulation of individual dies in dipping technique.



Order no. DK 000 198 AU 804

200 ml

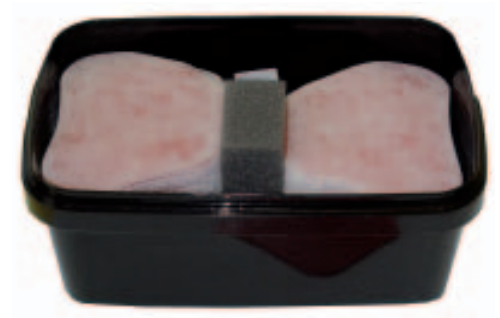
7. Additional Products for the Dental Laboratory

6.2 LC MORSA Tray plates - Light-Curing

For the fabrication of individual and functional impression trays. The material is also indicated for producing base plates for wax-ups and for bite templates. The sheets are anatomically shaped and vestibular enlarged for better use on moulds of dentate

jaws. The design and the handling characteristics make the sheet suitable for the upper as well as the lower jaw. The material can be cured with halogen and UV. Once cured properly the material is dimensional stable.

- high molecular acrylate with inorganic filler / easy manipulating before – dimensional stable after curing
- only one sheet model for upper and lower / less stock needed
- pink / blue opaque colour
- curing in 3 – 5 minutes with halogen or UV
- light curing / cures on demand
- 3 years shelf life
- 50 sheets per package

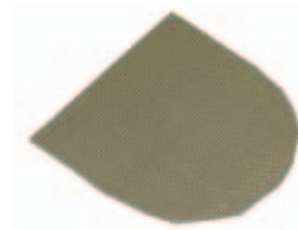


Polymerisation time ~ 5 minutes per side

Order no. DH 000 301 NB 814	pink	50 pieces per package
Order no. DH 000 303 NB 814	blue	50 pieces per package

6.3 Reinforcing net

- Gold plated net
- 0,4 mm thick
- Reinforces dental base and improves adhesion of acrylics.



Order no. DH 000 552 NB 815	golden	1 piece
-----------------------------	--------	---------

6.5. Shellac base plates

Base shellac plates for manufacturing of individual impression trays for impressions of edentulous jaws and manufacturing of wax bite registration templates.

- easily adaptable
- shape stable

NEW



Order no. DH 000 105 NB 804	pink, OK	100 pieces
Order no. DH 000 107 NB 804	pink, UK	100 pieces

7. Additional Products for the Dental Laboratory

6.6 MORSA Electrowaxer

Electronical controlled, high performance modelling unit with one modelling handpiece for the use at a single work-place. It is suitable for use in dental laboratory and in goldsmith's production. With an electrically heated handpiece and easily exchangeable modelling instruments. The variable working temperature provides a tension free wax modelling. The heat insulated cork handpiece guarantees a very secure guiding when modelling.

Advantages:

- Easy handling
- very productive
- variable temperature setting

Technical Data:

- Control unit: 12.0 x 6.5 x 8.0 cm
- 230 V - 50/60 Hz - 8 W
- temperature range 65-240 °C
- cable 2 m
- Handpiece CE examined



Delivery from:

Order no. DH 000 600 NB 860	Control unit, hand piece, modelling tip 1.0 mm	1 set
-----------------------------	--	-------

Accessoires:

Order no. DH 000 602 NB 860	Modelling tip - knife	1 piece
Order no. DH 000 603 NB 860	Modelling tip - lance	1 piece
Order no. DH 000 604 NB 860	Curved modelling tip of 0.5 mm	1 piece
Order no. DH 000 605 NB 860	Curved modelling tip of 1.0 mm	1 piece

6.7 MORSA DIP plus - Dipping wax unit - blue

Suitable for the thermal processing of all dipping waxes, excellent quality.

Advantages:

- Energy-saving
- Easy handling
- Short heating-up time
- Adjustable

Technical Data:

Measurements:	8.5 x 9.5 x 10 cm
Voltage:	230 V (also 115 V possible)
Frequenz:	50 Hz
Temperature:	60 °C - 105 °C adjustable
Output:	85 W
Energy saving control:	13 W
Capacity approx.:	25 ml
weight:	580 g



Order no. DH 000 700 NB 870	1 piece
-----------------------------	---------

6.8 MORSA Wax Brush, black, Size 6

For smoothing wax surfaces. Superior quality.



Order no. DM 000 140 VA 804	black	1 piece
-----------------------------	-------	---------

6.9 Wax knives

Waxknife 1, 130 mm long
Waxknife 2, 130 mm long
Waxknife 3, 100 mm long

- waxknife 1
- waxknife 2
- waxknife 3



Order no. DH 000 561 NB 815	waxknife 1, 130 mm long	1 piece
Order no. DH 000 562 NB 815	waxknife 2, 130 mm long	1 piece
Order no. DH 000 563 NB 815	waxknife 3, 100 mm long	1 piece

MORSA waxes have been developed further within the last decades due to consistent communication with practitioners and dental researchers. The management board is always open and grateful for feedback to MORSA from dental technicians and dentists, with opinions, suggestions and constructive criticism based on their practical experiences. For every idea which is transformed into a product you will receive a prize. We would like to thank you for the many years of support you have given us.

Müller Omicron GmbH, Postfach 11 30, 51779 Lindlar, Germany.
tel. +49 22 66 / 47 42 - 0, fax +49 22 66 / 34 17 and all their employees are representatives for our waxes throughout the whole of Germany. Internet: www.mueller-omicron.de - Email: info@mueller-omicron.de

7. MORSA – Promotional articles

Candles in the shape of teeth



Order no. DH 000 261 NB 815	tooth candle big, white, handpainted	1 piece
Order no. DH 000 262 NB 815	tooth candle small, white	1 piece
Order no. DH 000 263 NB 815	implant candle, silver	1 piece
Order no. DH 000 265 NB 815	gold tooth candle, golden	1 piece

Stand: März 2013