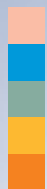




roeko



roeko

Dental World 2009/10

English

Roeko Dental World

Dear Customer,

We have been producing and promoting ROEKO dental consumer products for over 95 years; and dentists throughout the world, can assure the high quality of the brand. In 1995, we acquired the company HANEL and proceeded with the manufacturing and distribution for all HANEL occlusion materials.

Since January 2002, we have been a part of the globally-operating Coltène/Whaledent Dental Group; and were renamed as Coltène/Whaledent GmbH + Co. KG in June 2002. Our successful story continues to evolve thanks to your continued support. Enclosed is a listing of our complete product range with a special emphasis on Endodontics.





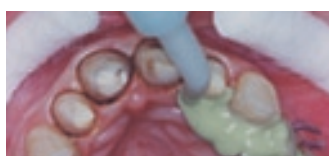
1	Endodontics		
	Vitality Control	page	6
	Root Canal Debridement	page	6 / 7
	Root Canal Drying	page	8 - 10
	Temporary Treatment	page	10
	Root Canal Obturation	page	11 - 15



2	Treatment Auxiliaries		
	Moisture Control	page	18 - 24
	Dental Dam	page	23 - 24
	Surgical Sundries	page	25 - 27
	Surgical Sutures	page	26 - 27



3	Hygiene		
	Gloves	page	30
	Face Mask	page	31
	Patient Bibs	page	32
	Headrest covers	page	33
	Sleeves for tubes	page	33



4	Prosthetics		
	Preparation and Impregnation	page	36 - 37
	Retraction Cord	page	36



5	Adhesives / Restoratives		
	Temporary Restoration	page	37



Overview

roeko

Indication/Technique	Product/Application	Product name	Page
Vitality Control	Cold Spray	Endo-Frost	6
		Endo-Frost Pellets	6
Root Canal Debridement	Root Canal Instruments and Accessories	K-Files	6
		H-Files	6
		Reamers	6
		Stopper	7
		Endo-Rac	7
		Steribox	7
		Steripaper	7
		Endo Gauges	7
		Sponges	7
		CanalBrush	7
Root Canal Drying	Paper Points	Top color	8
		Color	9
		White	9
		Conventional	10
Temporary Treatment	Temporary Fillings	Calcium Hydroxide PLUS Points	10
		activ point Chlorhexidine Points	10
Root Canal Obturation	Permanent Sealer	RoekoSeal	11
	Cold Filling System	GuttaFlow®/GuttaFlow® FAST	12
	Guttapercha Points	Top color	13
		Color	13
		Pink	13 - 14
		Conventional	14
		Greater Taper	14
	Retention Points	14	
	Instruments	Spreader NiTi	15
		Spreader	15
Plugger		15	

Vitality Control / Root Canal Instruments

roeko






Endodontics

Treatment Auxiliaries

Hygiene



Prosthetics

Adhesives/Restoratives

Product						
	Roeko Endo-Frost Cold spray, 200 ml – temperature -50 °C – spray nozzle for precise application – for freezing pellets and dental rolls – odorless	240 000				
	Roeko Endo-Frost Pellets Foam plastic pellets approx. 4 × 4 × 4 mm, 500 pcs The pellets are cooled with cold spray to test the vitality of the tooth. They can be used together with Solomat dispensers size 0 or 1 for hygienic storage and individual dispensing.	240 001				
Roeko Root Canal Instruments Root canal instruments for root canal preparation. – stainless steel – flexible – flawless edges – effective cutting – instruments supplied with stoppers (the shape of the stopper indicates the instrument type) – can be sterilized						
Roeko K-Files (ISO) length 25 mm						
	Set	6 pcs	Size	6 pcs	Size	6 pcs
	15–40	381 154	8	381 008	40	381 040
	45–80	381 458	10	381 010	45	381 045
			15	381 015	50	381 050
			20	381 020	55	381 055
			25	381 025	60	381 060
			30	381 030	70	381 070
			35	381 035	80	381 080
	Roeko H-Files (ISO) length 25 mm					
		Set	6 pcs	Size	6 pcs	Size
15–40		382 154	8	382 008	40	382 040
45–80		382 458	10	382 010	45	382 045
			15	382 015	50	382 050
			20	382 020	55	382 055
			25	382 025	60	382 060
			30	382 030	70	382 070
			35	382 035	80	382 080
Roeko Reamers (ISO) length 25 mm						
		Set	6 pcs	Size	6 pcs	Size
	15–40	380 154	8	380 008	40	380 040
	45–80	380 458	10	380 010	45	380 045
			15	380 015	50	380 050
			20	380 020	55	380 055
			25	380 025	60	380 060
			30	380 030	70	380 070
			35	380 035	80	380 080

Root Canal Instruments

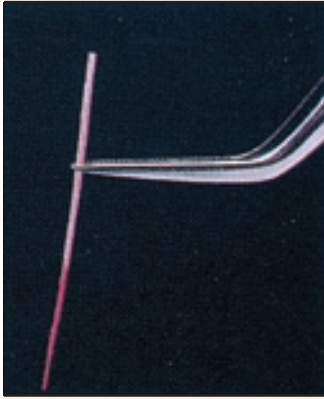
roeko

Product					
	Roeko Stopper For Roeko root canal instruments – made of silicone – radiopaque	50 pcs	331 000		
	Roeko Endo-Rac Instrument holder for preparing and sterilizing Roeko root canal instruments ready for treatment. – ergonomically designed surface – mm graduation line determines the position of the stopper along the instrument – handy and compact – can be sterilized in autoclave, chemiclave and dry heat sterilizer – chrome nickel steel – Size: 87 × 82 × 20 mm		332 000		
	Roeko Steribox For sterilization and storage of Endo-Rac. Size: 94 × 89 × 32 mm		332 010		
	Roeko Steripaper according to DIN EN 868-2 for REF 332 010 – with indicator	500 pcs	332 020		
	Roeko Endo Gauges Compact and handy instrument holders for preparing and sterilizing instruments ready for root canal treatment. Ideal for setting the length of root canal instruments, paper, guttapercha, Calcium Hydroxide PLUS and activ points.				
	Type C Chrome nickel steel with a specially treated surface – can be sterilized in autoclave and chemiclave – ø 33 mm, for 8 instruments, no sponge		330 001		
	Type CS Chrome nickel steel with a specially treated surface – can be sterilized in autoclave and chemiclave – ø 48 mm, for 12 instruments with a central well and sponge for used instruments		330 002	Roeko Sponges For holding used instruments in Endo Gauge CS – autoclavable up to 134 °C	330 003
	Roeko CanalBrush™ CanalBrush* is a highly flexible endodontic brush made of polypropylene. It is used during root canal treatments to remove dentin, plaque and other impurities loosened by files and drills. The extremely small CanalBrush helps cleaning parts of the root canal which are not reached by files. The use of CanalBrush in connection with an irrigating solution (e.g. NaOCl, NaCl, H ₂ O ₂ , alcohol, CHX) increases considerably the cleaning effect of irrigating solutions on the root canal surface. CanalBrush can be used manually with a rotary action. However, it is more efficient to use it with a contra-angle handpiece at a maximum of 600 rpm. <small>*This brush is not to be used for agitating a chelating agent in the root canal (according to US Patent no. 6,179,617).</small>				
	– better cleaning effect than with files – very flexible, lower risk of breakage – can be autoclaved at 134 °C			– can be used to place post cements or adhesives – with endo stops for length control	
	assortment S, M, L	30 pcs + stops	378 000	size M	20 pcs + stops 378 125
	size S	10 pcs + stops	378 020	size M	50 pcs + stops 378 225
	size S	20 pcs + stops	378 120	size L	10 pcs + stops 378 030
	size S	50 pcs + stops	378 220	size L	20 pcs + stops 378 130
	size M	10 pcs + stops	378 025	size L	50 pcs + stops 378 230

Paper Points

roeko

Product

**Roeko Paper Points**

Roeko paper points are ideal for drying root canals. They are manufactured from highly absorbent paper and are free of adhesives. They combine firmness with flexibility and exact standardization according to ISO.

- sterile
- highly absorbent
- no adhesives
- firm yet flexible for easy application
- fully automated production
- length: ISO and conventional ≥ 25 mm

Roeko Paper Points Top color

Roeko Top color paper points combine the advantages of the white and the color points. The color coding at the top of the points prevents mixing up of sizes. The white tip allows cleaning and drying of the root canal to be monitored.

- white tip, end colored



(ISO)-Drawer box	200 pcs	(ISO)-Drawer box	120 pcs
15–40	344 596	45–80	344 597
15	344 515	45	344 545
20	344 520	50	344 550
25	344 525	55	344 555
30	344 530	60	344 560
35	344 535	70	344 570
40	344 540	80	344 580

(ISO)-Drawer box	500 pcs	(ISO)-Drawer box	300 pcs
15–40	344 696	45–80	344 697
15	344 615	45	344 645
20	344 620	50	344 650
25	344 625	55	344 655
30	344 630	60	344 660
35	344 635	70	344 670
40	344 640	80	344 680



(ISO)-Cellpack	180 pcs
15–40	344 896
15	344 815
20	344 820
25	344 825
30	344 830
35	344 835
40	344 840

Paper Points

roeko

Product

Roeko Paper Points color

The color coding of the paper points prevents mixing up of sizes. When the points come into contact with body fluids the colors become deeper, indicating that moisture is still present in the canal. If sodium hypochlorite or hydrogen peroxide are present in the canal the points will turn white.

– color coded with pigments approved for use in pharmaceuticals and food



(ISO)-Drawer box	200 pcs	(ISO)-Drawer box	120 pcs
15–40	340 201	45–80	340 202
15	340 215	45	340 245
20	340 220	50	340 250
25	340 225	55	340 255
30	340 230	60	340 260
35	340 235	70	340 270
40	340 240	80	340 280
		90–140	340 204
		90	340 290
		100	340 210
		110	340 211
		120	340 212
		130	340 213
		140	340 214

(ISO)-Drawer box	500 pcs	(ISO)-Drawer box	300 pcs
15–40	341 596	45–80	341 597
15	341 515	45	341 545
20	341 520	50	341 550
25	341 525	55	341 555
30	341 530	60	341 560
35	341 535	70	341 570
40	341 540	80	341 580

Roeko Paper Points white

The white points allow cleaning and drying of the root canal to be monitored.



(ISO)-Drawer box	200 pcs	(ISO)-Drawer box	120 pcs
15–40	340 154	45–80	340 458
15	340 015	45	340 045
20	340 020	50	340 050
25	340 025	55	340 055
30	340 030	60	340 060
35	340 035	70	340 070
40	340 040	80	340 080
		90–140	340 914
		90	340 090
		100	340 100
		110	340 110
		120	340 120
		130	340 130
		140	340 140

(ISO)-Drawer box	500 pcs	(ISO)-Drawer box	300 pcs
15–40	341 154	45–80	341 458
15	341 015	45	341 045
20	341 020	50	341 050
25	341 025	55	341 055
30	341 030	60	341 060
35	341 035	70	341 070
40	341 040	80	341 080

Drying of root canal with Paper Points



Paper Points / Temporary Fillings

Product

Roeko Paper Points conventional

The tapered shape of Roeko Paper Points conventional means they are ideal for drying more conical root canals.
 – white
 – more tapered than ISO points



Drawer box	200 pcs	Drawer box	120 pcs
XXF-XL	342 000	M	342 004
XXF	342 001	L	342 005
XF	342 002	XL	342 006
F	342 003		
Drawer box	500 pcs	Drawer box	300 pcs
XXF-XL	343 000	M	343 004
XXF	343 001	L	343 005
XF	343 002	XL	343 006
F	343 003		

Cellpack	180 pcs	
XXF-XL	346 000	M 346 004
XXF	346 001	L 346 005
XF	346 002	XL 346 006
F	346 003	

Roeko Calcium Hydroxide PLUS Points

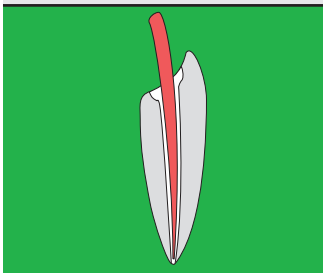
For temporary root canal fillings
 Calcium Hydroxide PLUS Points are an excellent alternative to calcium hydroxide pastes. They are easy to use, practical and effective. The points ensure that $\text{Ca}(\text{OH})_2$ is applied right down to the apex.
 – clean (no smearing around the access cavity during insertion)
 – time-saving – the points are ready to use
 – no mixing, easy to apply and to remove
 – greater release of $\text{Ca}(\text{OH})_2$, more effective over longer period
 – safe



(ISO)-Drawer box length: ≥ 27 mm			
15–40	366 896	45–80	366 897
15	366 815	45	366 845
20	366 820	50	366 850
25	366 825	55	366 855
30	366 830	60	366 860
35	366 835	70	366 870
40	366 840	80	366 880

**Roeko activ point Chlorhexidine Points**

For temporary root canal filling and prevention of reinfection. The points have a guttapercha matrix with 5 % chlorhexidine diacetate. Chlorhexidine is known to be highly effective against bacteria and many other organisms including yeasts and fungi even in low concentrations.
 – provides a means for applying chlorhexidine directly into the root canal
 – radiopaque
 – easy to apply and easy to remove

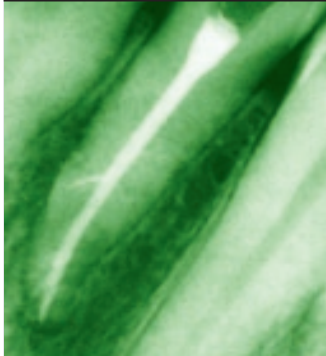


(ISO)-Drawer box length: ≥ 27 mm			
			60 pcs
15–40	367 296	45–80	367 297
15	367 215	45	367 245
20	367 220	50	367 250
25	367 225	55	367 255
30	367 230	60	367 260
35	367 235	70	367 270
40	367 240	80	367 280



Permanent Sealer

Product



Roeko RoekoSeal – Making Progress in Endodontics

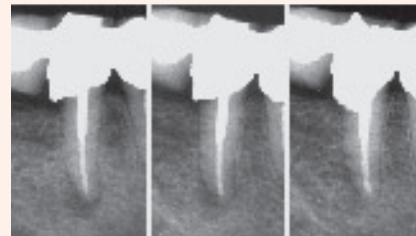
RoekoSeal is an exceptional root canal sealer. Its chemical and physical properties fulfill all the requirements of a root canal sealer. RoekoSeal combines exceptional material properties such as excellent flowability, no shrinkage and biocompatibility with practical handling. There is no risk of incorrect mixing. RoekoSeal provides an excellent seal and sets new standards in quality and biocompatibility in endodontics. RoekoSeal flows so well that the root canal and lateral canals are filled effectively. Cell tests, tests for mutagenic effects and sensibilization all showed negative results.



Single Dose



Automix



obturation 3 months 12 months

Clinical Tests

The results of the clinical study demonstrate clearly that the periapical periodontitis has healed well and show the clinical success of RoekoSeal.

The study was published in Journal of Endodontics, 2003 Apr; 36(4): 296-301



Roeko RoekoSeal Automix

- ready-to-use
- dispenses just the quantity required
- homogeneously and hygienically mixed and free of air bubbles
- easy to use

Set	349 100
Dual-barrel syringe	1 pc
Mixing tips	12 pcs

Refill pack	349 105
Mixing tips	24 pcs

Refill pack	349 102
Dual-barrel syringe	1 pc

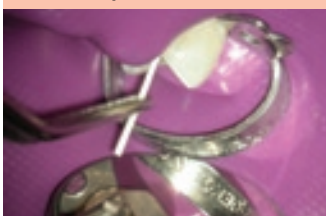


Roeko RoekoSeal Single Dose

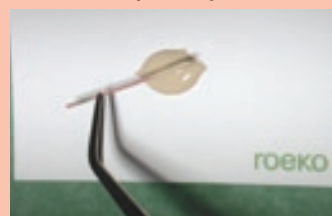
- individual portions
- hygienic
- easy to use
- perfect for pre-appointment set-up
- sufficient material to treat one multi-rooted tooth

349 103	Blister packs	40 pcs
	Mixing pad	1 pc
	Spatula	1 pc

The root canal is dried with Roeko Paper Points



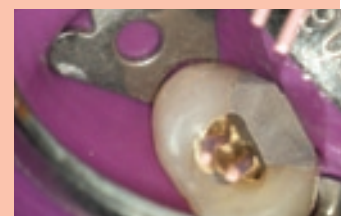
Application of RoekoSeal with Roeko Guttapercha points



Positioning in the canal



Sealed root canal



Cold Filling System

roeko

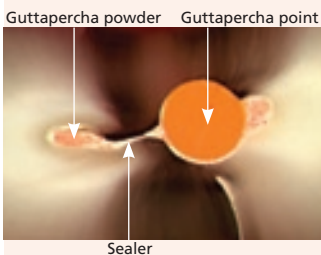
Product

**GuttaFlow® Two in One – Cold Flowable Obturation System for Root Canals**

GuttaFlow® is a completely novel filling system for root canals, that combines two products in one: gutta-percha in powder form with a particle size of less than 30 µm and sealer. This new filling system works with cold free-flow gutta-percha and uses an application system developed to enable an absolutely simple, safe and hygienic procedure.

GuttaFlow®

- is the first non-heated free-flow gutta-percha that does not shrink
- allows great ease of handling as only one master point is needed (condensation is not required)
- has excellent flow properties which allow optimum distribution in the root canal
- is extremely biocompatible
- allows good post preparation
- can be removed easily during retreatment
- ensures a very tight seal of the root canal
- is radiopaque for excellent x-ray evaluation
- working time: 10 – 15 minutes
- setting time: 25 – 30 minutes

**NEW! GuttaFlow® FAST**

- working time: 4 – 5 minutes
- setting time: 8 – 10 minutes
- GuttaFlow® FAST reduces chair time for the whole treatment session. This advantage in time shows during the obturation of only one to two root canals
- excess material at the opening of the cavity can be removed more rapidly due to the faster curing
- a temporary post can be placed together with GuttaFlow® FAST in the one treatment session

GuttaFlow® provides the dentist with a safe and time-saving root canal filling system.

Capsule

GuttaFlow® consists of two components (paste-paste-system). A special capsule for single use guarantees reliable dosage and mixing. No contamination can occur.

Canal Tip

The Canal Tip was developed for a fast, easy and safe application. It uses a luer lock design which is screwed onto the capsule after the mixing process. The Canal Tip is flexible so that GuttaFlow® can be applied quickly and easily.

Dispenser

The Dispenser has an elongated design to facilitate application. The parallel movement of the dispenser lever gives the clinician greater control.

**Introductory set GuttaFlow® 349 120**

GuttaFlow® Capsules	20 pcs
Canal Tips	20 pcs
Stops	20 pcs
Adapters for RotoMix™*	3 pcs
Dispenser	1 pc
Retention Points ISO 30-60 (without ISO 55)	100 pcs
Guttapercha points	60 pcs
Greater Taper 0.04 20–45	

Introductory set GuttaFlow® FAST 349 220

GuttaFlow® FAST Capsules	20 pcs
Canal Tips	20 pcs
Stops	20 pcs
Adapters for RotoMix™*	3 pcs
Dispenser	1 pc
Retention Points ISO 30-60 (without ISO 55)	100 pcs
Guttapercha points	60 pcs
Greater Taper 0.04 20–45	

Refill pack GuttaFlow® 349 130

GuttaFlow® Capsules	20 pcs
Canal Tips	20 pcs
Stops	20 pcs

Refill pack GuttaFlow® FAST 349 230

GuttaFlow® FAST Capsules	20 pcs
Canal Tips	20 pcs
Stops	20 pcs

Refill pack 349 132

Canal Tips	20 pcs
Stops	20 pcs

Refill pack 349 134

Combi Tips + Stops	20 pcs
--------------------	--------

Refill pack 349 133

Adapters for RotoMix™*	3 pcs
------------------------	-------

Dispenser 349 131

Dispenser	1 pc
-----------	------

* RotoMix™ ist not a trademark of Coltène/Whaledent

Guttapercha Points

roeko

Product

Roeko Guttapercha Points Top color

The color coding at the top of the pink points prevents mixing of sizes.

There is no risk of confusing the guttapercha points (pink) with paper points (white).

– pink tip, end colored

- length: ≥ 27 mm

(ISO)-Drawer box

100 pcs

15–40	365 196	45–80	365 197	90–140	365 198
15	365 115	45	365 145	90	365 190
20	365 120	50	365 150	100	365 191
25	365 125	55	365 155	110	365 192
30	365 130	60	365 160	120	365 193
35	365 135	70	365 170	130	365 194
40	365 140	80	365 180	140	365 195

(ISO)-6 Tubes

100 pcs

15–40	365 396	45–80	365 397
15	365 315	45	365 345
20	365 320	50	365 350
25	365 325	55	365 355
30	365 330	60	365 360
35	365 335	70	365 370
40	365 340	80	365 380

Roeko Guttapercha Points color

The color coding of the guttapercha points prevents mixing up of sizes and errors, reducing wastage and saving time. Color coded with pigments approved for use in pharmaceuticals and food.

(ISO)-Drawer box

100 pcs

15–40	362 154	45–80	362 458
15	362 015	45	362 045
20	362 020	50	362 050
25	362 025	55	362 055
30	362 030	60	362 060
35	362 035	70	362 070
40	362 040	80	362 080

Roeko Guttapercha Points pink

(ISO)-Drawer box

100 pcs

15–40	360 154	45–80	360 458	90–140	360 914
15	360 015	45	360 045	90	360 090
20	360 020	50	360 050	100	360 100
25	360 025	55	360 055	110	360 110
30	360 030	60	360 060	120	360 120
35	360 035	70	360 070	130	360 130
40	360 040	80	360 080	140	360 140

Guttapercha Points

roeko

Endodontics

Treatment Auxiliaries

Hygiene

Prosthetics

Adhesives/Restoratives

Product



(ISO)-6 Tubes		100 pcs	
15–40	361 154	45–80	361 458
15	361 015	45	361 045
20	361 020	50	361 050
25	361 025	55	361 055
30	361 030	60	361 060
35	361 035	70	361 070
40	361 040	80	361 080

Roeko Guttapercha Points conventional pink

Roeko guttapercha points conventional are more tapered and suitable for use as accessory points for condensation techniques.



Drawer box length: ≥ 27 mm	100 pcs
XF-L (without FF) 364 018	MF 364 012
F+M 364 019	F 364 013
XXF 364 009	FM 364 014
XF 364 010	M 364 015
FF 364 011	L 364 017

Roeko Guttapercha Points Greater Taper

Roeko Greater Taper guttapercha points are ideal for obturating root canals which have been prepared with GT Files, HERO, ProFile, Quantec etc. At the tip of the point the diameter corresponds to the ISO sizes, but then the conicity is greater than with ISO points.

– assorted or individual sizes



Taper 4 % / 0.04 Drawer box	60 pcs	Taper 6 % / 0.06 Drawer box	60 pcs
20–45	361 746	20–45	361 846
20	361 720	20	361 820
25	361 725	25	361 825
30	361 730	30	361 830
35	361 735	35	361 835
40	361 740	40	361 840
45	361 745	45	361 845

**Roeko Retention Points****Surface structured gutta-percha points**

Retention is an important aspect for root canal fillings. It has been known for many years that posts with a structured surface provide greater mechanical retention than posts without this feature. With the new Retention Points we can now offer this concept for gutta-percha points too!

THE ADVANTAGES:

- greater contact area for GuttaFlow®
- better mechanical retention



(ISO)-Drawer box	100 pcs
30–60 (without ISO 55)	365 495
30	365 430
35	365 435
40	365 440
45	365 445
50	365 450
55	365 455
60	365 460

Product

Roeko Spreader and Plugger

Lateral and vertical condensation are excellent techniques for root canal filling. Roeko Spreader and Plugger are high quality instruments for these techniques. They have structured handles, are ergonomic and durable.

Roeko Spreader NiTi

For lateral condensation

The tips are made from nickel titanium and have a memory, so that they return to their original shape. The tips are flexible and follow the curves of the canal for effective lateral condensation of the guttapercha even in the apical third of the root canal. The flexibility of the tips means there is less pressure on the root canal wall.

- very light instruments for less fatigue
- rings for easier identification

Size	3 pcs
15–35	386 009

Size	1 pc
15	386 015
25	386 025
35	386 035

Roeko Spreader

For lateral condensation

- rings in handle indicate size
- stainless steel

Size	4 pcs
20–50	386 000

Size	1 pc
20	386 002
30	386 003
40	386 004
50	386 005

Roeko Plugger

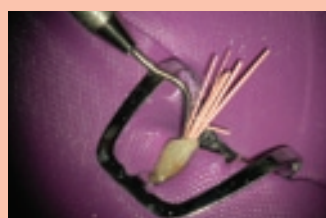
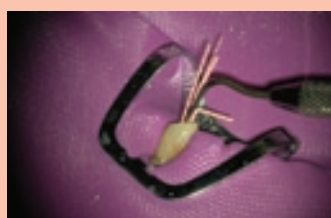
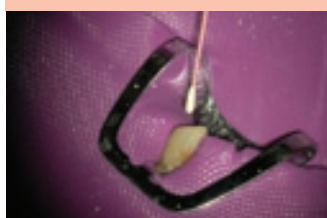
For vertical condensation

- rings in handle indicate size
- stainless steel
- mm length graduation on tips

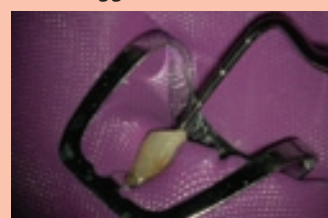
Size	4 pcs
0.6–1.2 mm	386 100

Size	1 pc
0.6 mm	386 106
0.8 mm	386 108
1.0 mm	386 110
1.2 mm	386 112

Lateral condensation with Spreader



Vertical condensation with Plugger





Overview



Indication/Technique	Product/Application	Productname	Page
Moisture Control	Dental Rolls	Luna	18
		Luna Gold	18
		Luna for kids	18
		Cotton-roll	19
		Parotissroll	19
		Parotissroll anatomic	19
	Pellets	Cotton Pellets	20
		Etching Pellets	20
	Dispensers	Roll-o-mat	19
		Lunamat	19
		Parotimat	20
		Solomat-Click	20
		Solomat-N	21
		Solomat	21
	Aspirator Tips	Concorde II	22
		Adapter	22
		Double Adapter	22
		Surgitip	22
		Surgitip-micro	23
		Aspirator Tips	23
	Dental Dam	Flexi Dam non latex	23
		Dental Dam Silicone non latex	23
		Dental Dam Latex	23
Dental Dam Set		23	
Dental Dam Accessories		24	
Surgical Sundries	Gauze Strips	Gauze strip	25
		Jodoform Tamponade	25
	Gauze Swabs	Roeko-Swab	25
	Gelatine Sponge	Gelatamp	26
Surgical Sutures	Atraumatic Needle Suture Combination	Sintraumal	26 - 27
	Surgical Sutures	Surgi-Fil	27

Dental Rolls

Endodontics

Treatment Auxiliaries

Hygiene

Prosthetics

Adhesives/Restoratives

Product



Roeko Luna for kids – extra short and absorbent for small patients

Luna for kids dental rolls specially for children. Due to their shortness Luna for kids are easily placed and removed. Unlike standard dental rolls Luna for kids don't cause any pressure and pain in a child's mouth. Preventive dentistry, and treatment with fillings and sealants run more smoothly.

Their high absorbency prevents regular changing. Keeping their shape throughout treatment they create sufficient working space even in the smallest mouth.

- extra short
- easily placed without causing unpleasant pressure in small mouths
- highly absorbent – no need for disturbing changing
- keep their shape throughout treatment – effectively retract cheek and lips

Size	200 pcs
2	100 032



Roeko Luna

The firmness and compactness of Luna rolls make them so economical. There is no need to replace them during treatment, so time consuming and expensive disturbances are a thing of the past. Luna goes on absorbing throughout the dental procedure and continues to retract the cheek – important aspects when choosing a dental roll.

- retracts cheek effectively
- keeps its shape and does not fall apart when full of saliva
- absorbs moisture throughout treatment
- packed in plastic bags protecting contents from moisture and dust

Size	300 g	Size	500 pcs	Size	1000 pcs
1	100 001	1	105 001	1	104 001
2	100 002	2	105 002	2	104 002
3	100 003	3	105 003	3	104 003
4	100 004	Export only		Export only	



Roeko Luna Gold - a gold stripe for your dental office

Luna Gold is a unique dental roll – you see and feel the difference. Luna Gold has a mucophile cover which prevents contact between the fibres and the soft tissue. Luna Gold can therefore be removed without wetting the dental roll beforehand. There is no risk of tissue inflammation, an important feature when treating sensitive patients.

The exceptional quality of Luna Gold is easily recognised – the gold stripe differentiates Luna Gold from standard dental rolls.

Luna Gold replaces Luna Comfort – well known for high quality and for patients' comfort

- no risk of tissue inflammation
- absorbs moisture throughout treatment
- does not fall apart when full of saliva
- non chlorine bleached
- Best quality made in Germany






Size	300 g
1	109 121
2	109 122
3	109 123
Size	1000 pcs
1	109 101
2	109 102
3	109 103
Export only	





Roll-o-mat dispenser - slight pressure on the lid and just one roll is dispensed. The remaining rolls are protected from spray and dust.



Dental Roll Dispensers / Parotisroll



Product													
	<p>Roeko Cotton-roll</p> <p>Cotton-roll is the softer, more absorbent dental roll for those dentists, who prefer rolls made entirely of cotton.</p> <ul style="list-style-type: none"> – is highly absorbent – is soft and smooth – is packed in plastic bags protecting contents from moisture and dust <table border="1"> <thead> <tr> <th>Size</th> <th>1000 pcs</th> </tr> </thead> <tbody> <tr> <td>1</td> <td>104 011</td> </tr> <tr> <td>2</td> <td>104 012</td> </tr> <tr> <td>3</td> <td>104 013</td> </tr> <tr> <td>Export only</td> <td></td> </tr> </tbody> </table>	Size	1000 pcs	1	104 011	2	104 012	3	104 013	Export only			
	Size	1000 pcs											
1	104 011												
2	104 012												
3	104 013												
Export only													
	<p>Roeko Roll-o-mat</p> <p>The Roll-o-mat dispenser is simply ingenious: slight pressure on the lid is sufficient to dispense just one roll, which stays on the fork ready for use. The remaining rolls are protected from spray and dust. The Roll-o-mat dental roll dispenser is available in plastic or chrome nickel steel and can be used for dental rolls sizes 1, 2 and 3 provided that they have a standard length (36–40 mm). The Roll-o-mat is not suited to dispense Luna for kids. Both dispensers can be autoclaved up to 134 °C.</p> <table border="1"> <thead> <tr> <th>Roeko Roll-o-mat Plastic, white</th> <th>120 004</th> <th>Roeko Roll-o-mat Chrome-Nickel-Steel</th> <th>120 005</th> </tr> </thead> <tbody> <tr> <td>Size 134 × 100 × 48 mm</td> <td></td> <td>Size 134 × 100 × 43.5 mm</td> <td></td> </tr> </tbody> </table>	Roeko Roll-o-mat Plastic, white	120 004	Roeko Roll-o-mat Chrome-Nickel-Steel	120 005	Size 134 × 100 × 48 mm		Size 134 × 100 × 43.5 mm					
	Roeko Roll-o-mat Plastic, white	120 004	Roeko Roll-o-mat Chrome-Nickel-Steel	120 005									
Size 134 × 100 × 48 mm		Size 134 × 100 × 43.5 mm											
	<p>Roeko Lunamat 120 000</p> <p>The Lunamat dispenser is equipped with a drawer. On opening the drawer 2–3 dental rolls are ready for use. The remaining rolls are protected from spray and dust. The dispenser is suitable for standard dental rolls size 1, 2, 3 and 4 and for Luna for kids.</p>												
	<p>Roeko Parotisroll</p> <p>Parotisroll is a unique dental roll with a spring action inside. Due to the spring action Parotisroll stays in place and provides more working space. Dental treatment runs more smoothly and with greater efficiency.</p> <ul style="list-style-type: none"> • When used buccally Parotisroll exerts gentle pressure on the parotis reducing saliva flow temporarily. It retracts the cheek and the spring action helps keep the mouth open. • When used lingually the arched roll holds down the tongue • When placed labially Parotisroll retracts the lip making it ideal for use in cosmetic dentistry, orthodontics and when treating children <table border="1"> <thead> <tr> <th>Size</th> <th>100 pcs</th> <th>Size</th> <th>100 pcs</th> </tr> </thead> <tbody> <tr> <td>1 ø 9 mm 80 mm</td> <td>160 001</td> <td>3 ø 10 mm 100 mm</td> <td>160 003</td> </tr> <tr> <td>2 ø 10 mm 80 mm</td> <td>160 002</td> <td>5 ø 8 mm 100 mm</td> <td>160 005</td> </tr> </tbody> </table>	Size	100 pcs	Size	100 pcs	1 ø 9 mm 80 mm	160 001	3 ø 10 mm 100 mm	160 003	2 ø 10 mm 80 mm	160 002	5 ø 8 mm 100 mm	160 005
	Size	100 pcs	Size	100 pcs									
1 ø 9 mm 80 mm	160 001	3 ø 10 mm 100 mm	160 003										
2 ø 10 mm 80 mm	160 002	5 ø 8 mm 100 mm	160 005										
	<p>Roeko Parotisroll anatomic by Dr. Hannelore Oberschachtsiek 160 013</p> <p>Parotisroll anatomic is the Parotisroll with flattened ends. The flat ends make the placement of the dental roll easier and reduce the “foreign body feeling” for the patient. Patients gag more frequently as the dentist works more distally, due to the unusual position of the tongue, and will try to push the roll to front of the mouth with the tongue. Parotisroll anatomic exerts less pressure onto the tongue’s margin than standard dental rolls. The treatment of sensitive patients with a strong gag effect will be much easier.</p> <ul style="list-style-type: none"> • Anatomic shape – easier to place than standard dental rolls due to flattened ends • Reduced foreign body feeling – treatment of sensitive patients with a strong gag effect will be easier • Spring action inside – dental roll stays in place <p>50 pc. in practical dispenser box, ø 10 mm, 100 mm</p>												

Parotisroll used buccally - the roll exerts gentle pressure on the parotis reducing saliva flow	Parotisroll used lingually - the roll holds down the tongue	Parotisroll used labially- the roll retracts the lip
		
		

Cotton Pellets / Etching Pellets / Dispenser

Endodontics

Treatment Auxiliaries

Hygiene

Prosthetics

Adhesives/Restoratives

Product																									
	<p>Roeko Parotimat 162 100</p> <p>Parotisroll dispenser holds 50 Parotisrolls. The dispenser enables individual removal and hygienic storage of Parotisroll and Parotisroll anatomic. Size 112 x 103 x 82 mm</p>																								
	<p>Roeko Cotton Pellets</p> <p>Roeko cotton pellets are super soft and extremely absorbent. Fully automated production and best quality cotton ensure constant high absorbency and uniform size and shape from pellet to pellet.</p> <table border="1"> <thead> <tr> <th>Size</th> <th></th> <th></th> <th></th> </tr> </thead> <tbody> <tr> <td>000</td> <td>ø 3.0 mm</td> <td>1.5 g</td> <td>210 000</td> </tr> <tr> <td>00</td> <td>ø 4.0 mm</td> <td>4.0 g</td> <td>210 100</td> </tr> <tr> <td>0</td> <td>ø 4.8 mm</td> <td>4.0 g</td> <td>210 110</td> </tr> <tr> <td>1</td> <td>ø 6.3 mm</td> <td>10.0 g</td> <td>210 111</td> </tr> <tr> <td>2</td> <td>ø 7.6 mm</td> <td>10.0 g</td> <td>210 112</td> </tr> </tbody> </table>	Size				000	ø 3.0 mm	1.5 g	210 000	00	ø 4.0 mm	4.0 g	210 100	0	ø 4.8 mm	4.0 g	210 110	1	ø 6.3 mm	10.0 g	210 111	2	ø 7.6 mm	10.0 g	210 112
Size																									
000	ø 3.0 mm	1.5 g	210 000																						
00	ø 4.0 mm	4.0 g	210 100																						
0	ø 4.8 mm	4.0 g	210 110																						
1	ø 6.3 mm	10.0 g	210 111																						
2	ø 7.6 mm	10.0 g	210 112																						
	<p>Roeko Etching Pellets</p> <p>Roeko etching pellets are firmly pressed, cylindrically shaped pellets, ideal for use with etching gels and pastes.</p> <p>Etching pellets – cylindrical and compact – fluff-free surface</p> <table border="1"> <thead> <tr> <th>Size</th> <th></th> <th>10 g</th> </tr> </thead> <tbody> <tr> <td>S</td> <td>ø 2 mm</td> <td>230 001</td> </tr> <tr> <td>M</td> <td>ø 3 mm</td> <td>230 002</td> </tr> <tr> <td>L</td> <td>ø 4 mm</td> <td>230 003</td> </tr> </tbody> </table>	Size		10 g	S	ø 2 mm	230 001	M	ø 3 mm	230 002	L	ø 4 mm	230 003												
Size		10 g																							
S	ø 2 mm	230 001																							
M	ø 3 mm	230 002																							
L	ø 4 mm	230 003																							
	<p>Roeko Solomat-Click</p> <p>Solomat-Click consists of the base, the refill and the dispenser surface. The three parts simply “click” together. The stainless steel base ensures stability. The rounded bars in the grill facilitate individual removal of pellets while keeping their shape. The lid protects the pellets from spray and dust. The refill which forms the body of the dispenser can be repurchased as required. Solomat-Click is available for pellet sizes 000, 00, 0 and 1.</p> <table border="1"> <thead> <tr> <th>Size Dispenser</th> <th>1 pc</th> <th>Size Refills</th> <th>3 pcs</th> </tr> </thead> <tbody> <tr> <td>000</td> <td>224 000</td> <td>000 ø 3.0 mm</td> <td>214 000</td> </tr> <tr> <td>00</td> <td>224 100</td> <td>00 ø 4.0 mm</td> <td>214 100</td> </tr> <tr> <td>0</td> <td>224 110</td> <td>0 ø 4.8 mm</td> <td>214 110</td> </tr> <tr> <td>1</td> <td>224 111</td> <td>1 ø 6.3 mm</td> <td>214 111</td> </tr> </tbody> </table> <p>Size 43 x 50 x 41 mm</p> <p>Size 43 x 43 x 31 mm</p>	Size Dispenser	1 pc	Size Refills	3 pcs	000	224 000	000 ø 3.0 mm	214 000	00	224 100	00 ø 4.0 mm	214 100	0	224 110	0 ø 4.8 mm	214 110	1	224 111	1 ø 6.3 mm	214 111				
Size Dispenser	1 pc	Size Refills	3 pcs																						
000	224 000	000 ø 3.0 mm	214 000																						
00	224 100	00 ø 4.0 mm	214 100																						
0	224 110	0 ø 4.8 mm	214 110																						
1	224 111	1 ø 6.3 mm	214 111																						

Cylindrically shaped etching pellets for use with etching gels and pastes



Roeko cotton pellets - absorbent soft and uniform



Solomat-Click - rounded bars in the grill facilitate individual removal of pellets.



Cotton Pellets Dispenser

roeko

Endodontics

Treatment Auxiliaries

Hygiene

Prosthetics

Adhesives/Restoratives

Product

**Roeko Solomat-N**

For easy removal of single cotton pellets, etching pellets or foam plastic pellets.

Solomat-N is

- made of high quality plastic
 - pellet dispenser with practical slot-in refill system
 - autoclavable up to 134 °C
- The cotton pellets are pushed to the surface by hand

Size Dispenser	1 pc	Size Refills	6 pcs
000	223 000	000	∅ 3.0 mm 213 000
00	223 100	00	∅ 4.0 mm 213 100
0	223 110	0	∅ 4.8 mm 213 110
1	223 111	1	∅ 6.3 mm 213 111
2	223 112	2	∅ 7.6 mm 213 112
Size 75 × 43 × 52 mm		Size 39 × 39 × 45 mm	

**Roeko Solomat**

Cotton pellet dispenser made of chrome plated brass. The spring base forces the cotton pellets to the surface.

The rounded bars, as opposed to wire mesh, make it possible for the pellets to keep their shape on removal. The dispenser can be sterilized in chemiclave, autoclave and dry heat sterilizer.

Size	1 pc	Size	1 pc
000	221 000	1	221 111
00	221 100	2	221 112
0	221 110	Size 70 × 50 × 50 mm	

Solomat-N - easy removal of single cotton pellets

Aspirator Tips / Adapter / Surgitip



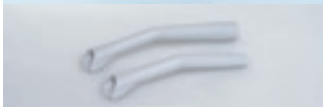
Product



Roeko Concorde II

The smooth contours of the Concorde II aspirator tips mean they are comfortable for the patient and easy to clean. Concorde II is made from high quality, durable plastic.

- low noise suction
- flange retracts tongue and cheek gently
- matt surface prevents light reflection
- can be sterilized in autoclave or chemiclave up to 134 °C
- the tips are available with ø 11 mm and ø 16 mm for all standard equipment. The 11 mm tips are supplied with an autoclavable Adapter.



ø 11 mm	10 pcs	450 211
ø 16 mm	10 pcs	450 216



Adapter and Double Adapter

To ensure that Roeko aspirator tips can be used on all standard aspirating equipment, Adapters are available. All Adapters are autoclavable and chemiclavable up to 134 °C.

Double Adapter	463 000	Adapter	463 011
-----------------------	----------------	----------------	----------------

The Double Adapter can be used to fit Surgitip, Surgitip-micro and the non sterile aspirator tips onto ø 11 mm and ø 16 mm equipment.

The single Adapter can be used to fit Concorde II 11 mm onto ø 16 mm equipment.



Roeko Surgitip

Precise and effective aspiration is a must for surgical procedures in the dental practice. Surgitip has been specially designed for use in general oral surgery.

- the extra length of the aspirator tips means they can be held at a distance from the operating area
- the fine tube and extra fine green tip ensure effective aspiration even in small spaces
- the angle of the tube and the conical shape of the green tip ensure that the field of vision is not blocked
- the green tip provides an excellent contrast to the operation area
- made of plastic so that they can be used in electrosurgery
- sterile



- ready for use in peel-packs the tips are hygienic and time-saving
- each box of Surgitip contains an autoclavable double adapter for adapting the tips to ø 11 mm and ø 16 mm equipment

Surgitip is available with 2.5 mm and 4.8 mm tip-openings.



End-opening ø 6.5 mm / Tip-opening ø 2.5 mm		End-opening ø 6.5 mm / Tip-opening ø 4.8 mm	
20 pcs*	462 025	20 pcs*	462 048
100 pcs**	462 026	100 pcs**	462 049

* includes 1 Double Adapter for ø 11 mm and ø 16 mm equipment.

**includes 5 Double Adapters for ø 11 mm and ø 16 mm equipment.

Concorde II: flange retracts tongue and cheek gently



Surgitip and Surgitip-micro – precise and effective aspiration during surgical procedures



Surgitip-micro / Dental Dam

roeko

Endodontics

Treatment Auxiliaries

Hygiene

Prosthetics

Adhesives/Restoratives

Product

**Roeko Surgitip-micro**

Surgitip-micro is specially designed for use with microscopes and loupes. The extra fine tip-opening of 1.2 mm ensures precise aspiration without blocking the field of vision. Surgitip-micro is sterile and ready for use in peel packs. Includes 1 Double Adapter for \varnothing 11 mm and \varnothing 16 mm equipment.

End-opening \varnothing 6.5 mm / Tip-opening \varnothing 1.2 mm

20 pcs **462 012**

**Roeko Aspirator tips**

The plastic aspirator tips for single use with an opening of 4.8 mm are ideal for moisture evacuation during all standard procedures where sterility is not a requirement. Supplied with an autoclavable Double Adapter to fit on all equipment.

End-opening \varnothing 6.5 mm / Tip-opening \varnothing 4.8 mm

100 pcs incl. 1 Double Adapter **461 048**

**Roeko Flexi Dam non latex**

Roeko Flexi Dam non latex is made from a high quality material with exceptional characteristics. Flexi Dam non latex is easy to use and ensures optimum moisture control. The highly elastic material contracts closely around the tooth for effective isolation. Violet Flexi Dam prevents confusion with latex dams. Blue Flexi Dam provides good contrast to the area of treatment and has a relaxing effect on the doctor. Working with Flexi Dam is effective and safe.

- latex free
- powderfree
- more tear resistant than latex
- highly elastic
- has excellent recovery properties for effective isolation of the tooth
- no unpleasant odor

**Roeko Flexi Dam non latex**

150 x 150 mm, 0.5 mm thick, 30 pcs + template

violet **390 035**

blue **390 033**



Roeko Dental Dam Silicone non latex 20 pcs **390 030**

For patients, doctors and assistants with latex allergies and those who are sensitized to latex. Autoclavable up to 134 °C. 150 x 150 mm, medium, green

Roeko Dental Dam (latex) , 150 x 150 mm 36 pcs

thin **390 020**

medium **390 021**

heavy **390 022**



Roeko Dental Dam Set **390 000**

Punch Type Ainsworth 1 pc

Clamp forceps Type Ivory 1 pc

Clampset 1 pc

Flexi Dam with template 30 pcs

Frame acc. to Young 1 pc

Preparing cannulas, surgical instruments and sutures for the extractions

Initial view of the lower jaw

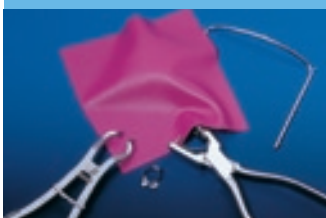


Dental Dam Accessories



Product																						
	<p>Roeko Dental Dam Accessoire</p> <p>Roeko Clamp Forceps 390 011</p> <p>High quality forceps to enable a secure transfer and fixation of the clamps to the tooth.</p> <ul style="list-style-type: none"> – easy to handle – can be sterilized in the autoclave or dry heat sterilizer 																					
	<p>Roeko Punch 390 010</p> <p>High quality instrument with 8 holes for Flexi Dam, Dental Dam Latex and Dental Dam Silicone non latex</p> <ul style="list-style-type: none"> – easy to handle – can be sterilized in the autoclave or dry heat sterilizer 																					
	<p>Roeko Metal frame 390 040</p> <p>The u-shaped frame has several prongs along its length to hold the dental dam tightly. The frame is made of high quality chrome nickel steel and can be sterilized.</p>																					
	<p>Roeko Plastic frame, foldable 390 041</p> <p>The oval frame is radiolucent and can be folded for taking x-rays and for aspiration. The frame is autoclavable up to 134 °C.</p>																					
	<p>Roeko Template 390 042</p> <p>The template is made of durable plastic and is an aid to locating and marking the hole positions on the dental dam.</p>																					
	<p>Roeko Clamps</p> <p>Roeko winged clamps provide extra retraction of the dam from the operating field.</p> <table border="0"> <tr> <td>#00</td> <td>Premolar, high bow, narrow jaw</td> <td>390 051</td> </tr> <tr> <td>#206</td> <td>Upper premolar, distinctive concave jaw</td> <td>390 052</td> </tr> <tr> <td>#209</td> <td>Lower premolar, flat clamp mouth</td> <td>390 053</td> </tr> <tr> <td>#200</td> <td>Lower molar</td> <td>390 054</td> </tr> <tr> <td>#201</td> <td>Upper molars, concave jaw shape</td> <td>390 055</td> </tr> <tr> <td>#211</td> <td>Anterior tooth, double-bow</td> <td>390 056</td> </tr> <tr> <td>#212</td> <td>Anterior tooth</td> <td>390 057</td> </tr> </table>	#00	Premolar, high bow, narrow jaw	390 051	#206	Upper premolar, distinctive concave jaw	390 052	#209	Lower premolar, flat clamp mouth	390 053	#200	Lower molar	390 054	#201	Upper molars, concave jaw shape	390 055	#211	Anterior tooth, double-bow	390 056	#212	Anterior tooth	390 057
#00	Premolar, high bow, narrow jaw	390 051																				
#206	Upper premolar, distinctive concave jaw	390 052																				
#209	Lower premolar, flat clamp mouth	390 053																				
#200	Lower molar	390 054																				
#201	Upper molars, concave jaw shape	390 055																				
#211	Anterior tooth, double-bow	390 056																				
#212	Anterior tooth	390 057																				
	<p>Roeko Clamp Set 390 050</p> <p>The set consists of clamp #00, #206, #209, #200, #201, #212</p>																					

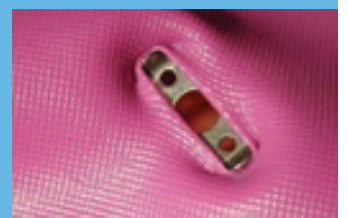
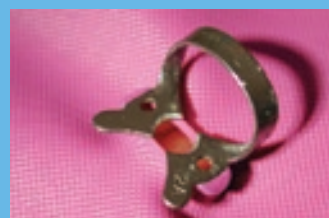
Dental Dam accessories



Punch a clean hole through the Flexi Dam



Place Flexi Dam over the wings of appropriate dam clamp



Surgical Sundries

Product			
	Roeko Gauze Strips		1 cm x 5 m 290 001
	– closely woven (24 threads/cm ²) cotton for gauze pack and drainage – bound, non-fray edges – sterile – ready for use in a dispenser		
	Roeko Jodoform Tamponade		1 cm x 5 m 300 001 2 cm x 5 m 300 002
	Impregnated ribbon gauze with iodoform for wound cleaning, for tamponing and drainage of abscesses, fistulae and ulcers. Non sterile.		
	Roeko-Swab sterile Roeko-Swab sterile are indispensable requisites during surgical procedures to swab blood and treat wounds. Once the bag has been opened individual swabs can be autoclaved up to 134 °C before use, so sterile swabs are ready for each operation.		
	Size		500 pcs
	pea	250 pcs	250 001
	hazel-nut	150 pcs	250 002
	walnut	75 pcs	250 003
	plum	50 pcs	250 004
egg	30 pcs	250 005	
x-large	20 pcs	250 006	
Size		1000 pcs	
pea		251 001	
hazel-nut		251 002	
walnut		251 003	
plum		251 004	
Roeko-Swab non-sterile Roeko-Swab non sterile in plastic bags are ideal for absorbing liquids and secretions in the oral cavity or for biting on during treatment.			
Size		500 pcs	
pea		252 001	
hazel-nut		252 002	
walnut		252 003	
plum		252 004	
egg		252 005	
x-large		252 006	
Size		1000 pcs	
pea		253 001	
hazel-nut		253 002	
walnut		253 003	

<p>Place the clamp with the bow pointing distally</p> 	<p>After placing the clamp, expose the wing</p> 	<p>Expose wings assure a good seal</p> 	<p>Use dental floss to secure the dam between contact points</p> 
--	---	---	--

Surgical Sundries

Endodontics

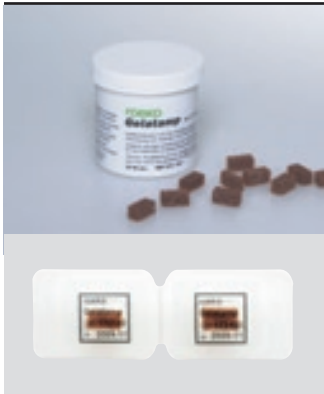
Treatment Auxiliaries

Hygiene

Prosthetics

Adhesives/Restoratives

Product



Roeko Gelatamp

Gelatamp gelatine sponge with colloidal silver provides the dentist with an effective, biocompatible product for reliable post extraction treatment. The colloidal silver has a bactericidal depot effect.

Gelatamp

- promotes coagulation and haemostasis
- prevents infection through its long lasting antimicrobial effect
- is resorbable
- can be cut to size
- supports healing
- prevents post operative haemorrhage
- prevents formation of secondary cavities
- sterile

20 pcs	14 × 7 × 7 mm	274 002	Blister Pack		
50 pcs	14 × 7 × 7 mm	274 007	20 pcs	14 × 7 × 7 mm	274 008



Surgical Sutures

Roeko atraumatic needle-suture combinations and surgical sutures are ideal for a wide range of operations in oral and gnatho surgery.

The tangle free sutures are easy to knot and stretch resistant. For easy identification the sutures are color coded: Silk black and Flexafil (polyester) green.

Roeko Sintraumal

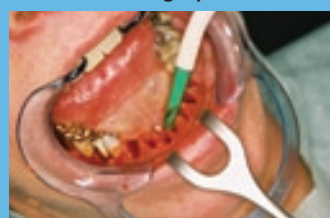
Sintraumal is an atraumatic needle-suture combination and ideal for use during surgical treatment in the dental practice. The eyeless, precision ground needles glide gently through the tissue and do not cause unnecessary trauma. Sintraumal is time-saving as it is packed, ready to use, in a sterile double peel-pack; threading and sterilization are not necessary.

Sintraumal is available in 7 needle/suture combinations. Sintraumal is non-resorbable.

Extraction of 33–43



Precise and effective aspiration with sterile Surgitip



Roeko-Swab autoclaved



Swab blood with Roeko-Swab after extraction



Surgical Sundries

Product					
	Needle-Suture Combination			Suture 45 cm	12 pcs
	HS 20	1.5 metric	USP 4/0	half circle, cutting needle used for operations in firm gum tissue	490 301
	HS 25	2.0 metric	USP 3/0	half circle, cutting needle used after extractions	490 302
	DS 20	1.5 metric	USP 4/0	3/8 circle, cutting needle used for apical extractions and flap operations	490 303
	HS 25	2.5 metric	USP 2/0	half circle, cutting needle used after extractions	490 305
	AS 30	2.0 metric	USP 3/0	fish hook, round bodied, cutting trocar finish used after extractions, e.g. wisdom teeth, flap operations	490 308
	HRT 18	2.0 metric	USP 3/0	half circle, round bodied, cutting, trocar finish used after extractions, e.g. wisdom teeth, serial extractions, stitches in firm tissue	490 306
	GR 20	1.5 metric	USP 4/0	straight, round bodied needle used for flap operations, periodontal surgery, gingivectomy	490 307
				Silk, black	
				Silk, black	
				Silk, black	
				Silk, black	
				Silk, black	
				Silk, black	
				Flexafil, green	
				Silk, black	

Roeko Surgi-Fil						
Surgical sutures without needles. Like Sintraumal the sutures are sterile and double peel-packed. Surgi-Fil is non-resorbable.						
	Silk, black	70 cm	12 pcs	Flexafil, green	70 cm	12 pcs
	4.0 metric	USP 1	490 409	2.0 metric	USP 3/0	490 421
	3.5 metric	USP 0	490 410	1.5 metric	USP 4/0	490 422
	2.5 metric	USP 2/0	490 411			
	2.0 metric	USP 3/0	490 412			
	1.5 metric	USP 4/0	490 413			

<p>Gelatamp for quick haemostasis and prevention of post operative infection</p>	<p>Gelatamp is cut to size</p>	<p>After extraction Gelatamp is placed in the socket</p>	<p>Sintraumal, sterile atraumatic needle-suture-combination</p>
---	---------------------------------------	---	--



Overview

Indication/Technique	Product/Application	Productname	Page
Dental Office	Gloves	Rexam non latex powderfree	30
		Rexam non latex	30
		GlovyI	30
		Rexam latex powderfree	30
		Rexam latex sensitive	30
	Face masks	Protecta Quick non latex	31
		Protecta Quick	31
		Protecta	31
		Directa	31
	Patient bibs	Simplex-Plus Maxi	32
		Simplex-Plus	32
		Simplex	32
		Simplimat Dispenser	32
		Denta	32
	Headrest covers	Headrest covers on a roll	33
		Filter paper	33
		Non-woven for KaVo	33
		Non-woven for Ritter	33
	Sleeves for tubes	Steri-sleeve	33
		Sleeves for tubes	33
	Sterile cover	Steri-Quick	33

Gloves






Endodontics

Treatment Auxiliaries

Hygiene

Prosthetics

Adhesives/Restoratives

Product																						
	<p>Rexam</p> <p>Rexam non latex powderfree</p> <p>Powderfree nitrile glove</p> <ul style="list-style-type: none"> – easy donning even without powder – latex free – blue <p>Available only within the EU</p>	<table border="0"> <tr> <td>x-small</td> <td>5–5 ½</td> <td>100 pcs</td> <td>692 070</td> </tr> <tr> <td>small</td> <td>6–6 ½</td> <td>100 pcs</td> <td>692 071</td> </tr> <tr> <td>medium</td> <td>7–7 ½</td> <td>100 pcs</td> <td>692 072</td> </tr> <tr> <td>large</td> <td>8–8 ½</td> <td>100 pcs</td> <td>692 073</td> </tr> <tr> <td>x-large</td> <td>9–9 ½</td> <td>100 pcs</td> <td>692 074</td> </tr> </table>	x-small	5–5 ½	100 pcs	692 070	small	6–6 ½	100 pcs	692 071	medium	7–7 ½	100 pcs	692 072	large	8–8 ½	100 pcs	692 073	x-large	9–9 ½	100 pcs	692 074
	x-small	5–5 ½	100 pcs	692 070																		
	small	6–6 ½	100 pcs	692 071																		
	medium	7–7 ½	100 pcs	692 072																		
	large	8–8 ½	100 pcs	692 073																		
x-large	9–9 ½	100 pcs	692 074																			
	<p>Rexam non latex</p> <p>Slightly powdered nitrile glove</p> <ul style="list-style-type: none"> – structured fingertips for a better grip – three times the puncture resistance of comparable latex or Vinly gloves – latex free – green <p>Available only within the EU</p>	<table border="0"> <tr> <td>small</td> <td>6–6 ½</td> <td>100 pcs</td> <td>692 061</td> </tr> <tr> <td>medium</td> <td>7–7 ½</td> <td>100 pcs</td> <td>692 062</td> </tr> <tr> <td>large</td> <td>8–8 ½</td> <td>100 pcs</td> <td>692 063</td> </tr> </table>	small	6–6 ½	100 pcs	692 061	medium	7–7 ½	100 pcs	692 062	large	8–8 ½	100 pcs	692 063								
	small	6–6 ½	100 pcs	692 061																		
	medium	7–7 ½	100 pcs	692 062																		
	large	8–8 ½	100 pcs	692 063																		
	<p>Glovyll</p> <p>Slightly powdered vinyl glove</p> <ul style="list-style-type: none"> – durable and tear resistant – latex free – transparent 	<table border="0"> <tr> <td>small</td> <td>6–6 ½</td> <td>100 pcs</td> <td>693 001</td> </tr> <tr> <td>medium</td> <td>7–7 ½</td> <td>100 pcs</td> <td>693 002</td> </tr> <tr> <td>large</td> <td>8–8 ½</td> <td>100 pcs</td> <td>693 003</td> </tr> </table>	small	6–6 ½	100 pcs	693 001	medium	7–7 ½	100 pcs	693 002	large	8–8 ½	100 pcs	693 003								
	small	6–6 ½	100 pcs	693 001																		
	medium	7–7 ½	100 pcs	693 002																		
large	8–8 ½	100 pcs	693 003																			
	<p>Rexam latex powderfree</p> <p>Powderfree latex glove</p> <ul style="list-style-type: none"> – reduced protein content being powderfree – easy donning even without powder – off-white <p>Available only within the EU</p>	<table border="0"> <tr> <td>x-small</td> <td>5–5 ½</td> <td>100 pcs</td> <td>692 050</td> </tr> <tr> <td>small</td> <td>6–6 ½</td> <td>100 pcs</td> <td>692 051</td> </tr> <tr> <td>large</td> <td>7–7 ½</td> <td>100 pcs</td> <td>692 052</td> </tr> <tr> <td>x-large</td> <td>8–8 ½</td> <td>100 pcs</td> <td>692 053</td> </tr> </table>	x-small	5–5 ½	100 pcs	692 050	small	6–6 ½	100 pcs	692 051	large	7–7 ½	100 pcs	692 052	x-large	8–8 ½	100 pcs	692 053				
	x-small	5–5 ½	100 pcs	692 050																		
	small	6–6 ½	100 pcs	692 051																		
	large	7–7 ½	100 pcs	692 052																		
x-large	8–8 ½	100 pcs	692 053																			
	<p>Rexam latex sensitive</p> <p>Slightly powdered latex glove</p> <ul style="list-style-type: none"> – very soft and supple – white <p>Available only within the EU</p>	<table border="0"> <tr> <td>x-small</td> <td>5–5 ½</td> <td>100 pcs</td> <td>692 020</td> </tr> <tr> <td>small</td> <td>6–6 ½</td> <td>100 pcs</td> <td>692 021</td> </tr> <tr> <td>large</td> <td>7–7 ½</td> <td>100 pcs</td> <td>692 022</td> </tr> <tr> <td>x-large</td> <td>8–8 ½</td> <td>100 pcs</td> <td>692 023</td> </tr> </table>	x-small	5–5 ½	100 pcs	692 020	small	6–6 ½	100 pcs	692 021	large	7–7 ½	100 pcs	692 022	x-large	8–8 ½	100 pcs	692 023				
	x-small	5–5 ½	100 pcs	692 020																		
	small	6–6 ½	100 pcs	692 021																		
	large	7–7 ½	100 pcs	692 022																		
x-large	8–8 ½	100 pcs	692 023																			

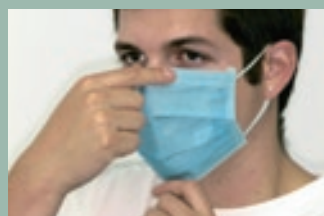
Examples of application



Face Masks

Product	
	<p>Face masks</p> <p>Roeko Protecta Quick non latex 680 010</p> <p>Latex free face mask with ear-loops</p> <ul style="list-style-type: none"> - 100% latex free - skin friendly non-woven material - triple-ply - filtration rate > 99%, type II according to EN 14683:2005 <ul style="list-style-type: none"> - ultrasonic sealed seams - long, pliable nose bow - extra soft ear-loops <p style="text-align: right;">blue 50 pcs</p>
	<p>Roeko Protecta Quick 680 006</p> <p>Light face masks with ear-loops</p> <ul style="list-style-type: none"> - light - triple-ply - filtration rate > 98%, type II according to EN 14683:2005 <ul style="list-style-type: none"> - ultrasonic sealed seams - long, pliable nose bow - extra soft ear-loops <p style="text-align: right;">green 50 pcs</p>
	<p>Roeko Protecta 680 002</p> <p>Face mask with ties</p> <ul style="list-style-type: none"> - triple-ply - filtration rate > 99%, type II according to EN 14683:2005 <ul style="list-style-type: none"> - ultrasonic sealed seams - long, pliable nose bow <p style="text-align: right;">green 50 pcs</p>
	<p>Roeko Directa</p> <p>Dome shaped hygiene mask</p> <ul style="list-style-type: none"> - filtration rate > 99% - with one end-to-end elastic band - pliable nose bow <p style="text-align: right;">blue 50 pcs 680 004 white 50 pcs 680 005</p>

Examples of application



Patient Bibs

Endodontics

Treatment Auxiliaries

Hygiene

Prosthetics

Adhesives/Restoratives

Product										
	<p>Patient Bibs</p> <p>Roeko Simplex-Plus Maxi</p> <ul style="list-style-type: none"> – PE foil with absorbent cellulose cover – perforated – on a roll – extra wide – better protection for patient's clothes – tie-fastening – in a practical dispenser box Size 60 × 60 cm 									
	<table border="0"> <tr> <td>white</td> <td>80 pcs</td> <td>647 101</td> </tr> <tr> <td>blue</td> <td>80 pcs</td> <td>647 102</td> </tr> <tr> <td>mint</td> <td>80 pcs</td> <td>647 104</td> </tr> </table>	white	80 pcs	647 101	blue	80 pcs	647 102	mint	80 pcs	647 104
	white	80 pcs	647 101							
blue	80 pcs	647 102								
mint	80 pcs	647 104								
	<p>Roeko Simplex-Plus</p> <ul style="list-style-type: none"> – made of polyethylene with absorbent cellulose coating – roll of bibs with tear-off perforation – tie-fastening Size 59 × 54 cm 									
	<table border="0"> <tr> <td>white</td> <td>80 pcs</td> <td>647 001</td> </tr> <tr> <td>blue</td> <td>80 pcs</td> <td>647 002</td> </tr> </table>	white	80 pcs	647 001	blue	80 pcs	647 002			
white	80 pcs	647 001								
blue	80 pcs	647 002								
	<p>Roeko Simplex</p> <ul style="list-style-type: none"> – polyethylene – roll of bibs with tear-off perforation – tie-fastening Size 77 × 56 cm 									
	<table border="0"> <tr> <td>white</td> <td>200 pcs</td> <td>645 001</td> </tr> <tr> <td>blue</td> <td>200 pcs</td> <td>645 002</td> </tr> <tr> <td>green</td> <td>200 pcs</td> <td>645 003</td> </tr> </table>	white	200 pcs	645 001	blue	200 pcs	645 002	green	200 pcs	645 003
	white	200 pcs	645 001							
blue	200 pcs	645 002								
green	200 pcs	645 003								
<p>Roeko Simplimat Dispenser 701 000</p> <p>Dispenser holds one roll of Simplex or Simplex-Plus or headrest covers so the contents can be easily removed by means of the perforation.</p> <p>Size 31 × 13 × 12.5 cm</p> <p style="text-align: right;">white</p>										
	<p>Roeko Denta 634 024</p> <ul style="list-style-type: none"> – washable, plastic patient bib – adjustable neck size with velcro fastener – with catch pocket at hem Size 70 × 60 cm 									

Examples of application

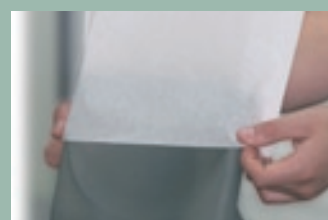
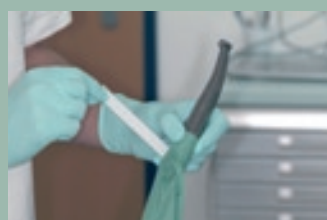


Headrest Covers / Sleeves for tubes

roeko

Product														
	<p>Roeko Headrest covers on a roll</p> <ul style="list-style-type: none"> – polyethylene with absorbent cellulose coating – tear-off perforation – fits in Simplimat – in 3 sizes for a wide range of chairs 	<table border="1"> <tr> <td>Size</td> <td></td> <td>100 pcs</td> </tr> <tr> <td>1</td> <td>27 × 28 cm</td> <td>670 007</td> </tr> <tr> <td>2</td> <td>27 × 31 cm</td> <td>670 008</td> </tr> <tr> <td>3</td> <td>27 × 34 cm</td> <td>670 009</td> </tr> </table>	Size		100 pcs	1	27 × 28 cm	670 007	2	27 × 31 cm	670 008	3	27 × 34 cm	670 009
	Size		100 pcs											
	1	27 × 28 cm	670 007											
2	27 × 31 cm	670 008												
3	27 × 34 cm	670 009												
<p>Roeko Filter paper</p> <p>Individual headrest covers in a box 500 pcs Size 25 × 32 cm</p>	670 002													
	<p>Roeko Non-woven for KaVo</p> <p>Model: 1042 (previous model 1060/1062) Size 26 × 22 cm 100 pcs 670 004</p>	<p>Roeko Non-woven for Ritter</p> <p>Model: Analog Size 26 × 22 cm 50 pcs 670 005</p>												
	<p>Model: 1062 SOMA Size 27 × 22 cm 50 pcs 670 006</p>													
	<p>Roeko Steri-sleeve</p> <p>Sterile sleeves for tubes. The sterile alternative for protection during operations</p> <ul style="list-style-type: none"> – polyethylene with absorbent cellulose coating – individually peel-packed with tape fastener – ready to use – provides optimum hygiene conditions – each sleeve 100 cm <p>Size 7.5 × 100 cm 25 pcs</p>	670 101												
	<p>Roeko Sleeves for tubes, non-sterile 670 100</p> <ul style="list-style-type: none"> – polyethylene with absorbent cellulose coating – roll of 7.5 cm × 100 m – contains velcro fastener 	<p>Roeko Velcro fastener 5 pcs 670 102</p>												
	<p>Roeko Steri-Quick</p> <p>Steri-Quick are ideal for</p> <ul style="list-style-type: none"> – covering trays – covering and protecting sterile instruments – protecting patients – polyethylene sheets with absorbent – ready to use – cellulose coating <p>Each cover is individually packed and sterile.</p>	<table border="1"> <tr> <td>350 × 500 mm</td> <td>80 pcs</td> <td>671 100</td> </tr> <tr> <td>500 × 700 mm</td> <td>50 pcs</td> <td>671 101</td> </tr> <tr> <td>700 × 1000 mm</td> <td>25 pcs</td> <td>671 102</td> </tr> </table>	350 × 500 mm	80 pcs	671 100	500 × 700 mm	50 pcs	671 101	700 × 1000 mm	25 pcs	671 102			
	350 × 500 mm	80 pcs	671 100											
500 × 700 mm	50 pcs	671 101												
700 × 1000 mm	25 pcs	671 102												

Examples of application





Overview

roeko

Indication/Technique	Type of Product	Material	Product Name	Page
Preparation	Products for Retraction		Comprecord	36
			Retracto	36
			Stay-put	36
			Retraction Cord Packer	36
			Comprecap	37
			Comprecap anatomic	37
Impregnation		Aluminium Chloride Hexahydrate	Gingiva Liquid	36

Overview

roeko

Indication/Technique	Product/Application	Product Name	Page
Temporary Restoration		Snap Set	37
		Snap Powder	37
Accessories	Auxiliary material	Matrices	38

Retraction Cord

Endodontics

Treatment Auxiliaries

Hygiene

Prosthetics

Adhesives/Restoratives

Product



Roeko Comprecord

Comprecord is an air texturized retraction cord with a stable structure and a great total volume which makes Comprecord highly absorbent. The cord has a pliable structure that allows Comprecord to adapt easily to the sulcus without fraying and shedding fibers.

Advantages of Comprecord:

- pliable structure
- outstanding absorbency
- easy to place in the sulcus
- does not fray and shed fibers
- color coded for easy distinction of sizes

Non impregnated, 225 cm	
x-fine	515 000
fine	515 001
medium	515 002
thick	515 003



Roeko Retracto

Braided

Impregnated with aluminium chloride hexahydrate, 225 cm		Non impregnated, 225 cm	
fine	510 001	x-fine	511 000
medium	510 002	fine	511 001
thick	510 003	medium	511 002
		thick	511 003

Twisted

Impregnated with aluminium chloride hexahydrate, 225 cm		Non impregnated, 225 cm	
fine	522 001	x-fine	523 000
medium	522 002	fine	523 001
thick	522 003	medium	523 002
		thick	523 003



Roeko Stay-put non impregnated

Stay-put combines the advantages of a braided retraction cord with the adaptability of a fine metal filament. The pliable core is so effective that the cord is not only easy to place in the sulcus but it stays there.

Non impregnated, 183 cm			
x-fine	521 000	medium	521 002
fine	521 001	thick	521 003



Roeko Stay-put impregnated

Impregnation with aluminium chloride hexahydrate. Stay-put impregnated is colour coded for easy distinction of sizes and to contrast well with the gingiva.

Impregnated with aluminium chloride hexahydrate, 183 cm			
x-fine	521 020	medium	521 022
fine	521 021	thick	521 023

Roeko Retraction Cord Packer

smooth	520 000	serrated	520 001
--------	---------	----------	---------

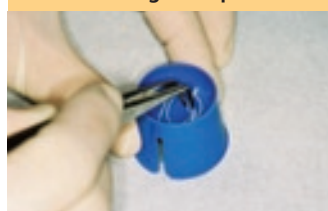


Roeko Gingiva Liquid

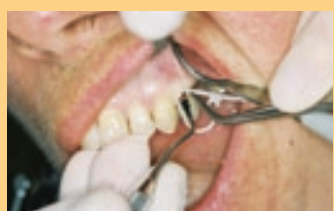
An astringent, styptic solution with 10 % aluminium chloride hexahydrate. No cardiovascular problems as it does not contain Epinephrine. For treatment of the gingiva before taking an impression and to impregnate retraction cords.

Roeko Gingiva Liquid	524 000
Content	10 ml

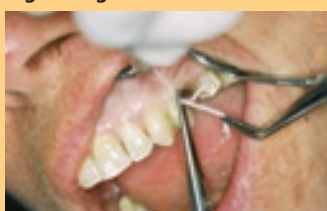
Impregnation of retraction cord with Gingiva Liquid



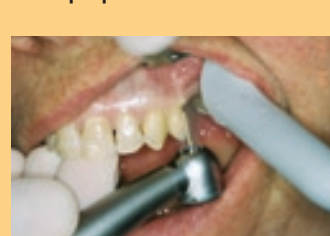
Place the centre of the cord into the sulcus



Cut the retraction cord to the right length



Final preparation



Gingiva retraction

Product



Roeko Comprecap

Roeko Comprecap compression caps stop bleeding naturally - by compression and control moisture. The use is simple and supports impression preparation regardless of the retraction technique.

Set	530 000	Single Sizes		
Content 1/3/5	150 pcs	1	120 pcs	530 008
		1	600 pcs	531 008
		3	120 pcs	530 010
		3	600 pcs	531 010
		5	60 pcs	530 014
		5	400 pcs	531 014



Comprecap anatomic

Are anatomically formed compression caps with semicircled shaped spaces on two opposite sides and can therefore be easily placed on adjacent teeth.

Set	531 299	Single Sizes		
Content 1/3/5	120 pcs	1	120 pcs	531 201
		3	120 pcs	531 203
		5	60 pcs	531 205

Adhesives/Restoratives



Roeko Snap

Resin for temporary crowns and bridges

Snap Set	540 001	Monomer	118 ml	541 000
Powder 62, 65, 69, 77	4 x 40 g			
Monomer	118 ml			

Snap Powder

Color 59	40 g	542 059	Color 59	170 g	543 059
Color 61	40 g	542 061	Color 61	170 g	543 061
Color 62	40 g	542 062	Color 62	170 g	543 062
Color 65	40 g	542 065	Color 65	170 g	543 065
Color 69	40 g	542 069	Color 69	170 g	543 069
Color 77	40 g	542 077	Color 77	170 g	543 077
clear	40 g	542 000	clear	170 g	543 000

Easy positioning of retraction cords with Roeko Retraction Cord Packer



Fine preparation



Comprecap holds the retraction cord deep in the sulcus



Preparation ready for impression-taking



Restorations

Endodontics

Treatment Auxiliaries

Hygiene

Prosthetics

Adhesives/Restoratives

Product																																			
	<p>Roeko Matrix Bands For use with amalgam fillings and glass ionomer cement.</p>																																		
	<table border="0"> <tr> <td colspan="2">Roeko Matrix band soft</td> <td colspan="2">Roeko Strip</td> <td>600 009</td> </tr> <tr> <td colspan="5">Stainless steel, extra fine (0.05 mm), can be applied interproximally.</td> </tr> <tr> <td>Width 5 mm</td> <td>3 m</td> <td>591 505</td> <td colspan="2"></td> </tr> <tr> <td>Width 6 mm</td> <td>3 m</td> <td>591 506</td> <td colspan="2"></td> </tr> <tr> <td>Width 7 mm</td> <td>3 m</td> <td>591 507</td> <td colspan="2"></td> </tr> </table>	Roeko Matrix band soft		Roeko Strip		600 009	Stainless steel, extra fine (0.05 mm), can be applied interproximally.					Width 5 mm	3 m	591 505			Width 6 mm	3 m	591 506			Width 7 mm	3 m	591 507											
	Roeko Matrix band soft		Roeko Strip		600 009																														
Stainless steel, extra fine (0.05 mm), can be applied interproximally.																																			
Width 5 mm	3 m	591 505																																	
Width 6 mm	3 m	591 506																																	
Width 7 mm	3 m	591 507																																	
<p>Matrix band regular Annealed stainless steel thickness 0.03 mm</p> <table border="0"> <tr> <td>Width 5 mm</td> <td>3 m</td> <td>590 305</td> <td>thickness 0.05 mm</td> <td></td> </tr> <tr> <td>Width 6 mm</td> <td>3 m</td> <td>590 306</td> <td>Width 5 mm</td> <td>3 m</td> </tr> <tr> <td>Width 7 mm</td> <td>3 m</td> <td>590 307</td> <td>Width 6 mm</td> <td>3 m</td> </tr> <tr> <td></td> <td></td> <td></td> <td>Width 7 mm</td> <td>3 m</td> </tr> <tr> <td></td> <td></td> <td></td> <td></td> <td>590 505</td> </tr> <tr> <td></td> <td></td> <td></td> <td></td> <td>590 506</td> </tr> <tr> <td></td> <td></td> <td></td> <td></td> <td>590 507</td> </tr> </table>	Width 5 mm	3 m	590 305	thickness 0.05 mm		Width 6 mm	3 m	590 306	Width 5 mm	3 m	Width 7 mm	3 m	590 307	Width 6 mm	3 m				Width 7 mm	3 m					590 505					590 506					590 507
Width 5 mm	3 m	590 305	thickness 0.05 mm																																
Width 6 mm	3 m	590 306	Width 5 mm	3 m																															
Width 7 mm	3 m	590 307	Width 6 mm	3 m																															
			Width 7 mm	3 m																															
				590 505																															
				590 506																															
				590 507																															
	<p>Roeko Abrasive Strips For smoothing of interproximal spaces, not accessible or difficult to access with other instruments.</p> <table border="0"> <tr> <td>40 micron, 10 m</td> <td>560 040</td> </tr> <tr> <td>60 micron, 10 m</td> <td>560 060</td> </tr> </table>	40 micron, 10 m	560 040	60 micron, 10 m	560 060																														
	40 micron, 10 m	560 040																																	
60 micron, 10 m	560 060																																		
<p>Roeko Polishing Strips Made of abrasion resistant polyester for final finishing of the filling.</p> <table border="0"> <tr> <td>30 micron, 10 m</td> <td>560 030</td> </tr> </table>	30 micron, 10 m	560 030																																	
30 micron, 10 m	560 030																																		
	<p>Steel separating strips For approximal separation.</p> <table border="0"> <tr> <td>12 pcs 4 mm</td> <td>570 004</td> </tr> <tr> <td>12 pcs 6 mm</td> <td>570 006</td> </tr> <tr> <td>12 pcs 8 mm</td> <td>570 008</td> </tr> </table>	12 pcs 4 mm	570 004	12 pcs 6 mm	570 006	12 pcs 8 mm	570 008																												
	12 pcs 4 mm	570 004																																	
	12 pcs 6 mm	570 006																																	
12 pcs 8 mm	570 008																																		

Product		Product	
A	Page	I/J	Page
Abrasive Strips	38	Jodoform Tamponade	25
Activ Point Chlorhexidine Points	10	K	Page
Adapter, Double Adapter	22	K-Files	6
Aspirator Tips	22 - 23	L	Page
Atraumatic sutures	26 - 27	Luna, Luna for kids, Luna Gold	18
B	Page	Lunamat	19
Bibs	32	M	Page
C	Page	Matrix Bands	38
Calcium Hydroxide PLUS Points	10	P	Page
CanalBrush	7	Paper Points	8 - 10
Clamps	24	Parotimat	20
Cold Spray	6	Parotisroll, Parotisroll anatomic	19
Comprecap, Comprecap anatomic	37	Patient bibs	32
Comprecord	36	Pluggers	15
Concorde II	22	Polishing Strips	38
Cotton Pellets	20	Protecta, Protecta Quick, Protecta Quick non latex	31
Cotton-roll	19	R	Page
D	Page	Reamers	6
Dental Dam Accessoires	24	Retention Points	14
Dental Dam Set	23	Retraction cords	36
Dental Dam Silicone, Dental Dam Latex, Dental Dam Non Latex	23	Retracto	36
Dental Rolls	18	Retraction Cord Packer	36
Dental roll dispenser	19	Rexam gloves	30
Directal	31	RoekoSeal	11
E	Page	Roeko-Strip	38
Endo Gauges	7	Roeko-Swab	25
Endo-Frost, Endo-Frost Pellets	6	Roll-o-mat	19
Endo-Rac	7	Root canal instruments	6 - 7
Etching Pellets	20	S	Page
F	Page	Simplex, Simplex-Plus, Simplex-Plus Maxi	32
Face masks	31	Simplimat Dispenser	32
Flexi Dam non latex	23	Sleeves for tubes	33
G	Page	Snap	37
Gauze Strips	25	Solomat, Solomat-Click, Solomat-N	20 - 21
Gauze Swabs	25	Spreader, Spreader NiTi	15
Gelatamp	26	Stay-put, Stay-put impregnated	36
Gingiva Liquid	36	Steel separating strips	38
Gloves	30	Steribox, Steripaper	7
Glovyll	30	Steri-Quick	33
Greater Taper Guttapercha Points	14	Steri-sleeve	33
GuttaFlow®/GuttaFlow® FAST	12	Stopper	7
Guttapercha Points	13 - 14	Surgical aspirator tips	22
H	Page	Surgical Sutures	26 - 27
Headrest covers	33	Surgi-Fil	27
H-Files	6	Surgitip, Surgitip-micro	22 - 23
		Sintraumal	26 - 27

Worldwide Dental Group

Progression of the success story. Over 900 employees are working on a success story for Coltène/Whaledent. In the past they have built up the Coltène/Whaledent brand quality with superior, pioneering, and time-and-again new dental products. We specifically invest in our own research and development. As a competent business partner, Coltène/Whaledent supports dentistry and dental technology with innovative dental products and comprehensive dental solutions.



Switzerland

Coltène/Whaledent AG
Feldwiesenstrasse 20; 9450 Altstätten/Switzerland
Tel. +41 (0)71 757 53 00; Fax +41 (0)71 757 53 01;
info@coltenewhaledent.ch



USA

Coltène/Whaledent Inc.
235 Ascot Parkway; Cuyahoga Falls, OH 44223/USA
Tel. +1 330 916 8800; Fax +1 330 916 7077;
info@coltenewhaledent.com



Germany

Coltène/Whaledent GmbH + Co. KG
Raiffeisenstrasse 30; 89129 Langenau/Germany
Tel. +49 (0)7345 805 0; Fax +49 (0)7345 805 201;
info@coltenewhaledent.de



Switzerland

Coltène/Whaledent AG
Rüthi/Switzerland



Hungary

Dentalia
2060 Bicske; Akácfa utca 86
Tel. +49 (0)7345 805 0; Fax +49 (0)7345 805 201

UK

Coltène/Whaledent Ltd.
The President Suite-A
Kendal House, Burgess Hill
Victoria Way
West Sussex, RH15 9NF/U.K.
Tel. +44 (0)1444 235486
Fax +44 (0)1444 870640
info@coltenewhaledent.co.uk
www.coltenewhaledent.com

France

Coltène/Whaledent S.à.r.l.
19, bld Alexandre Oyon
72058 LE MANS Cedex 02
Tél : +33 (0)2 43 39 30 30
Fax : +33 (0)2 43 39 30 40
info@coltenewhaledent.fr

Dealer/Importer: