

Esthetic Porcelain

VINTAGE

THE UNIVERSAL PORCELAIN SYSTEM

RELIABLE • CONSISTANT • BRILLIANT



VINTAGE

A SIMPLE SYSTEM FOR PERFECT ESTHETICS

The **VINTAGE** Porcelain System combines proven porcelain technology with an efficient method for manufacturing metal-ceramic and metal-free restorations.

The easy to handle porcelain powders are perfectly suited to non-precious and universal PFM-alloys.

Using matched up powder opaques, opaque dentin and body powders in combination with the opalescent incisal powders, true-to-life shades can be reproduced according to the VITA* Classical Color System right from the basic layers.

In addition to these esthetic benefits, **VINTAGE** porcelain offers the advantage of noticeable physical properties, such as very low chemical solubility and high flexural strength.

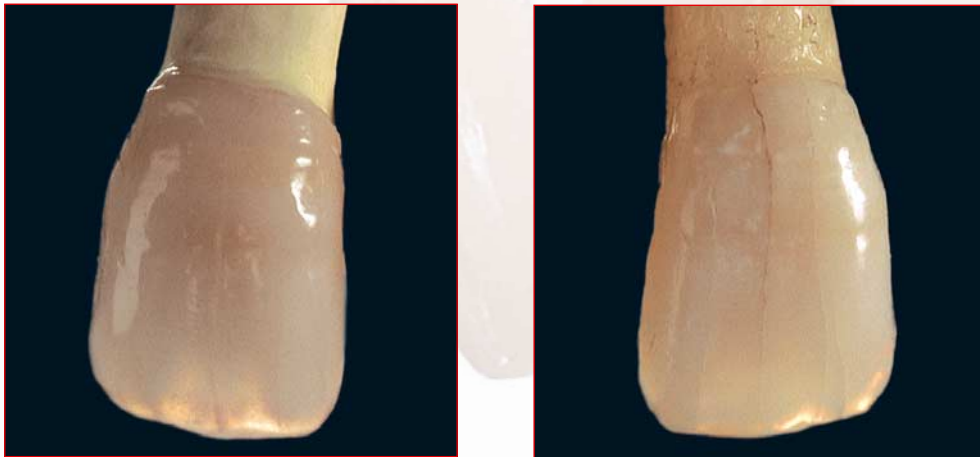


THE PROVEN **VINTAGE** PORCELAIN SYSTEM OFFERS VERSATILE ADVANTAGES

- Solid, homogeneous, high fusing feldspar porcelain with excellent impressing color vitality
- Suitable for use with non-precious and almost other universal PFM-alloys with a CTE range of $13.6 - 15.0 \times 10^{-6} \text{K}^{-1}$ ($25^\circ \text{C} - 500^\circ \text{C}$)
- Optimum bonding with high fusing powder opaques
- Easy handling, good modelling properties, efficient and simple 2-layer build up system
- Extensive range of opalescent incisal and effect powders
- Low firing shrinkage, homogeneous surface condition
- Reproduction of metal-free crowns, veneers, inlays and onlays in combination with the **VINTAGE** Lamina System is possible
- Matched with the VITA* Classical Color System

OPAL PORCELAIN

HERE THE LIGHT CAN PASS THROUGH



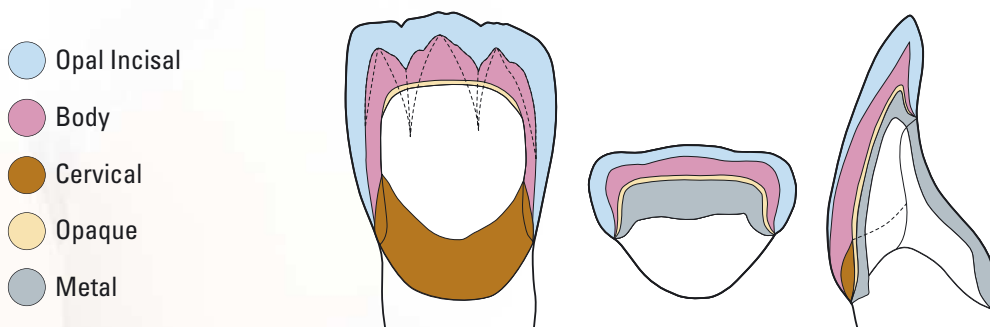
Natural teeth appear to be bluish translucent to diffuse reddish-orange in the interplay of the light. The particle size and structure of the **VINTAGE** opal incisal and translucent powders is very similar in size (0.15-0.30 μm) and structure to that of dental enamel.

They reproduce this appearance in the same manner without the addition of intensive effect colors.

THE ECONOMIC PRINCIPLE

MAXIMUM ESTHETIC APPEARANCE ACHIEVED WITH MINIMAL TIME AND EFFORT

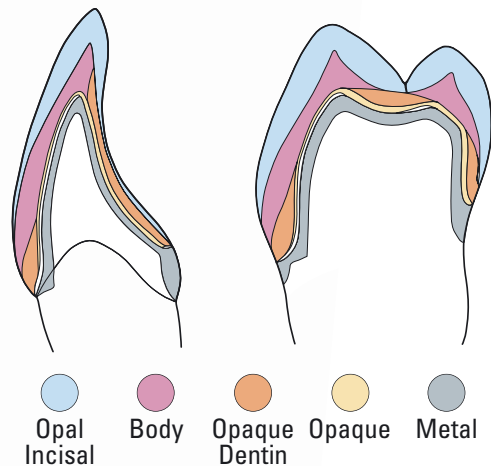
Because of its similarity with the dentin-enamel structure of the tooth, **VINTAGE OPAL PORCELAIN** makes it possible to use a 2-layer technique, the result of which is indistinguishable from the natural appearance.



OPAQUE DENTIN PERFECT COLOR REPRODUCTION EVEN WITH THIN LAYERS

The interplay of the opaque colors with the layer thickness and intensity of the individual porcelain powders, particularly with critical place conditions, decisively determines the appearance.

An optimum color match is achieved by a micro fine particle structure of the **VINTAGE OPAQUE DENTINE**, particularly with thin layer thickness such as cervical / lingual or occlusal, without these areas appearing dull and lifeless.



THE SHADES LOGICALLY MATCHED WITH EACH OTHER

SHOFU VINTAGE & UNI BOND COLOR TABLE																SHOFU INC. 11 KAMITAKAMATSU-CHO, FUKUINE, HIGASHIYAMA-KU, KYOTO 605, JAPAN			
SHADE	A1	A2	A3	A3.5	A4	B1	B2	B3	B4	C1	C2	C3	C4	D2	D3	D4			
OPAQUE	PA1O	PA2O	PA3O	PA3.5O	PA4O	PB1O	PB2O	PB3O	PB4O	PC1O	PC2O	PC3O	PC4O	PD2O	PD3O	PD4O			
BODY	A1B	A2B	A3B	A3.5B	A4B	B1B	B2B	B3B	B4B	C1B	C2B	C3B	C4B	D2B	D3B	D4B			
CERVICAL	—	50%AC 50%A2B	50%AC 50%A3B	50%AC 50%A3.5B	AC	—	50%BC 50%B2B	50%BC 50%B3B	BC	—	50%CC 50%C2B	50%CC 50%C3B	CC	DC	—	50%DC 50%D4B			
INCISAL	58	59	60	57	58	59	58	59	58	59	60	59	60	59	60	59			
TRANSLUCENT	T																		
COLOR POWDER	EF-1	EF-2	YELLOW	WHITE	ORANGE	BROWN	LIGHT PINK	BLUE	GRAY	POM-1	POM-2	POM-3	POM-4	POM-5	PINK	DARK PINK			
	GUM GUM																		

All colors of the **VINTAGE** Porcelain System are matched logically to each other for the reproduction according to the VITA* Classical Color System. Furthermore, a wide range of individual effect powders for the opaques, the body and the incisal powders is already contained in the **VINTAGE** Full Set.

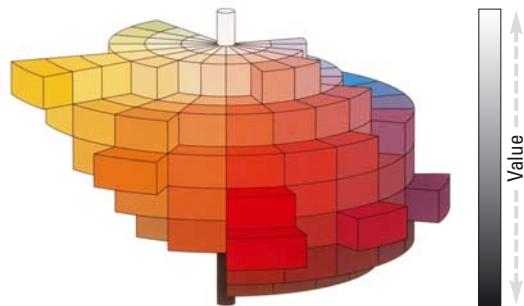
*VITA is a registered trademark of VITA Zahnfabrik, Bad Säckingen.

VALUE PLUS

ACCURATE CONTROL OF THE BRIGHTNESS

Natural teeth are often brighter than the shade guides can show. **VINTAGE VALUE PLUS** powders are easily to use porcelain materials that are mixed to the body powders or to the opaques in accordance with a mixing chart.

The brightness (value) can thus be increased without altering the color intensity (chroma) or the color tone (hue).



LAMINA PORCELAIN

METAL FREE ESTHETICS WITHOUT COMPROMISE

LAMINA PORCELAIN creates a homogeneous shade base and a secure bonding to heat-resistant die investment during the reproduction of metal-free restorations.

The harmonisation to the **VINTAGE** porcelain powders subsequently to be layered guarantees permanent, perfectly fitting and esthetically high-quality anterior crowns and veneers.



Metal-free **VINTAGE** porcelain restorations convince with natural appearance



Made by Mr. Bernhard Egger (MDT), Füssen, Germany

STAINS

STAINS FOR INDIVIDUAL CHARACTERISATION

VINTAGE STAINS support the natural appearance of the ceramic restorations. Fine individual characteristics can be easily and quickly applied.

The nine logically created intensive colors are extremely fine-grained, firing stable and can be mixed with each other.



VINTAGE System Sets

VINTAGE Full Set

Basic assortment with all the necessary components for the production of PFM-restorations

VINTAGE Opaque Dentin Set

For a natural color reproduction with thin layers

VINTAGE Lamina Porcelain Set

The supplement system for production of metal-free crowns, inlays, onlays and veneers

VINTAGE Opal Full Set

Opalescent incisal and translucent powders for a natural light transmission in the incisal area

VINTAGE Value Plus Set

Micro fine porcelain powders for a controlled increase of the brightness of body and opaque powders

VINTAGE Stain Set

For supporting the natural appearance of the ceramic restorations

Technical Data Overview

(as per EN ISO 9693/2000)

VINTAGE forms a perfect symbiosis in combination with all non precious and universal PFM-alloys with a CTE range of $13.6-15.0 \times 10^{-6}K^{-1}$ (25 °C – 500 °C).

The CTE of the porcelain is purposefully and optimally raised by altering the temperature rise.

		CTE (25 ~ 500 °C)	Glass transformation point
Opaque	2. / 4. firing	$13.0 / 13.2 \times 10^{-6}K^{-1}$	590 °C
Body, Incisal, Cervical, Opaque Dentin, Effect powders	2. / 4. firing	$12.6 / 12.8 \times 10^{-6}K^{-1}$	580 °C
Correction	2. / 4. firing	$12.6 / 12.8 \times 10^{-6}K^{-1}$	585 °C



SHOFU INC. 11 Kamitakamatsu-cho, Fukuine, Higashiyama-ku, Kyoto 605-0983, Japan
SHOFU INC. Singapore Branch 10 Science Park Road #03-12, The Alpha, Science Park II, Singapore 117684
SHOFU DENTAL CORPORATION 1225 Stone Drive, San Marcos, CA 92078-4059, USA
SHOFU DENTAL PRODUCTS LTD. Duke's Factory, Chiddingstone Causeway, Tonbridge, Kent, TN11 8 JU, UK
SHOFU DENTAL SUPPLIES (Shanghai) CO. LTD. No.645 Jiye Road, Sheshan Industry Park, Songjiang 201602, Shanghai, China
SHOFU DENTAL GmbH Am Brüll 17, 40878 Ratingen, Germany