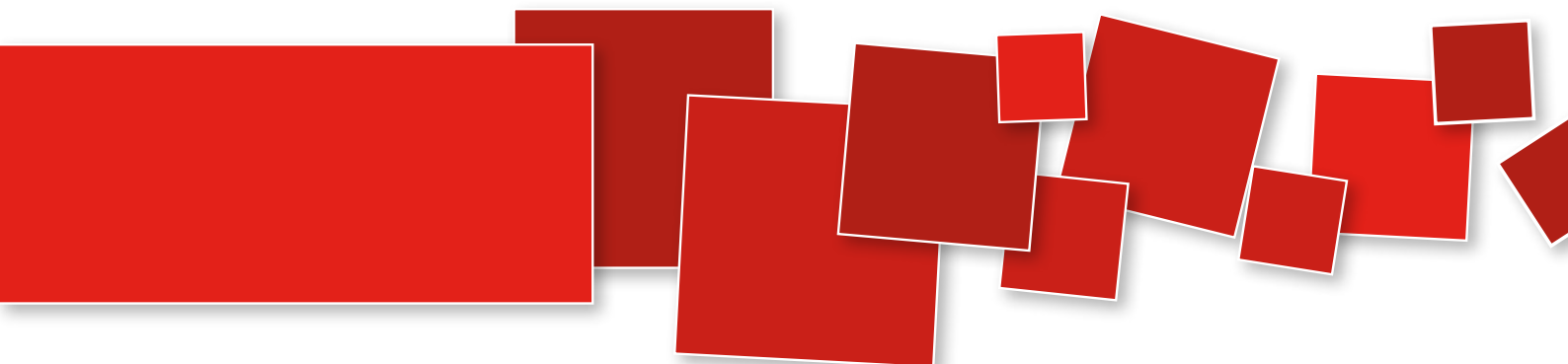




CATALOGUE  
EQUIPMENT  
2012







# ***Equipment and accessories catalogue***



## WELCOME

Zhermack specializes in the production of materials and equipment for dental practices and dental laboratories, and provides its customers products whose trademarks are constant innovation and excellent quality.

Zhermack, undisputed leader in impression material production, was founded in 1981 and quickly positioned itself among the most important companies in the dental sector.

Besides its headquarters in Italy, Zhermack has branches in Germany, the United States and Poland and has Representative Offices in key locations such as Russia, United Kingdom, Spain, France, Mexico, Colombia and Turkey.

The widespread distribution network, with over 800 distributors worldwide, guarantees global sales coverage.



## BEYOND INNOVATION

Zhermack is one of the few companies in the dental sector around the world to synthesize polymers and catalysts completely in-house, thus ensuring control over all the phases in the manufacturing process and achieving high quality standards.

The Clinical and Technical divisions work in partnership with international researchers and leading universities so as to be able to continually propose innovative solutions for the more demanding dentists and dental technicians.

## ZHERMACK CLINICAL

The Clinical division provides solutions for the dentistry sector.

The market demands innovative and reliable products; Zhermack Clinical responds to the needs of dentists by creating advanced products such as the first sterile silicone for surgical use or thermochromic silicone for impressions.

The ongoing investments into research and development are aimed at putting into practice effective solutions to improve the everyday work of the dentist.





## ZHERMACK TECHNICAL

The Zhermack Technical division manufactures products and equipment for the dental laboratory market.

A quality prosthetic device is the result of using reliable materials that can guarantee the perfect outcome of any application; Zhermack Technical, with its nearly thirty years of experience and know-how, understands the work of dental technicians, and provides them a series of materials and equipment that can fulfill any requirement impeccably.

The solutions for dental laboratories include a vast range of silicones for making a matrix, model duplication and gingival reproduction on models, as well as a complete series of dental stone that, together with the numerous tools and equipment, form an integrated systems for all types of work.



## TOTAL QUALITY

At Zhermack, respect for the environment is a key value. The company's environmental culture is expressed through a carefully adopted system for managing processes, standards and procedures aimed at minimizing the environmental impact of the manufacturing technologies.

The UNI EN ISO 9001 and ISO 14001 certification confirm the importance that Zhermack attributes to total quality management, while compliance with the strictest registration standards set by the competent health authorities, such as the US Food and Drug Administration, protects the end user of Zhermack products.

Zhermack works with constant respect for man and the environment, through ongoing health checks, environmental monitoring, reduction of fume and noise emissions, and the updating of all safety standards.

## FOLLOW US

**"Our aim  
is to consolidate  
zhermack products  
and leader ship worldwide  
pursuing, creativity,  
innovation and values"**





## CLINICAL EQUIPMENT

### *MIXER*

Hurrimix .....	6
----------------	---

### *AUTOCLAVES*

Zetaclave .....	8
-----------------	---

### *MIXER*

Alghamix II .....	10
-------------------	----

### *MIXER*

Modulmix .....	12
----------------	----

## LABORATORY EQUIPMENT

### *MIXER*

Elite® mix .....	14
------------------	----

### *MIXER*

Doublemix .....	16
-----------------	----

### *PORCELAIN FURNACE*

Giga .....	18
------------	----

### *Vacuum pump*

Satovac 1 .....	19
-----------------	----

### *SANDBLASTERS*

Dune ECOTECH .....	20
--------------------	----

Dune .....	21
------------	----

### *Dust Extractor*

SAB 1000 .....	22
----------------	----

### *Sand*

Zeta Sand .....	23
-----------------	----

### *PRESSURE POLYMERIZED*

Polimer 180 .....	24
-------------------	----

### *BOILING POLYMERIZER*

Prothyl polimer .....	25
-----------------------	----

### *WELDING MACHINE*

Quasar .....	27
--------------	----

### *PRE-HEATING FURNACES*

DM .....	28
----------	----

D .....	29
---------	----

Extractor for models D & DM .....	30
-----------------------------------	----

DE .....	31
----------	----

### *STEAM CLEANERS*

VAP 1 .....	32
-------------	----

VAP 6 .....	33
-------------	----



***Water softner***

AD 8 .....	34
------------	----

***MODEL TRIMMER***

SQM .....	35
-----------	----

***DENTAL STONE WORKSTATION FOR DENTAL SURGERY***

Minilab .....	36
---------------	----

***POLISHING LATHE***

PUL 2 N .....	37
---------------	----

***MICROMOTOR***

Ario 35 .....	38
---------------	----

***MILLING MACHINE***

M & T 1 .....	39
---------------	----

***CENTRIFUGAL CASTING MACHINE***

CM 1 .....	40
------------	----

***MODEL PINNING MACHINE***

Euclide .....	42
---------------	----

***VIBRATOR***

A 12 .....	44
------------	----

***DIE SEPARATING UNIT***

Talete .....	45
--------------	----

**NOTE:**

The images and texts related at the technical data of the individual products and accessories may be changed during the period of validity the catalog. The images are only representative of this product. Not all products are sold in every country.



# Hurrimix

Automatic mixer for alginates and stones\*



## APPLICATIONS

- Automatic mixer for alginates and stones\*

## CHARACTERISTICS

- Large digital display
- Software with 20 mixing programs:
  - 10 alginate programs, including 7 customised for Zhermack alginates, but can be modified according to need
  - 10 dental stone programs, including 7 customised for Zhermack elite® dental stones, but can be modified according to need
- Can mix small quantities of Zhermack elite® dental stones\* (up to 100g)
- Design with personalisable front cover in 6 colours (standard white or optional orange, green, blue, navy and grey)
- Electronic microprocessor control
- Polycarbonate membrane controls
- Metal/plastic casing
- Standard equipment: spatula kit, pre-mixing stick, spatula holder, 2 alginate mixing containers, 2 stone mixing containers, 1 water bottle with graduated measuring cup
- Silent running: noise level <70 dB

## ADVANTAGES

- Constant mixing quality
- Homogenous, creamy mix
- Far shorter mixing times than with manual mixing
- Extremely simple to use and clean: the container hermetically seals to avoid all dispersion of material during mixing
- Large digital display allows easy program setting
- Latest generation, compact design with rounded corners. Covers available in 6 different colours to match your clinic decor

\*Guaranteed mixing quality for Zhermack elite® rock, elite® master, elite® stone, elite® model, elite® model Fast, elite® ortho and elite® arti stones.

### Technical Data

CODE	MODEL	SIZE (CM)	WEIGHT (KG)	VOLTAGE (V / HZ)	TOTAL POWER
C305130	Hurrimix 230V, standard white cover	L24 / P30 / H31	22	230 V – 50 Hz	400 Watt
C305131	Hurrimix 115V, standard white cover	L24 / P30 / H31	22	115 V – 50 Hz	400 Watt



# Accessories



Colour cover (optional)



Water bottle with graduated measuring cup



Mixing spatulas kit



Mixing containers

For further information and photos, please refer to the product data sheet on line at [www.zhermack.com](http://www.zhermack.com)

## Standard components

XR0250820	Mixing spatulas kit
XR0250830	Pre-mixing stick
XR0250800	Alginate mixing containers (2 pcs.)
XR0250810	Stone mixing containers (2 pcs.)
XR0250840	Water bottle with graduated measuring cup

## Accessories

XR0250860	Orange cover
XR0250865	Navy blue cover
XR0250870	Green cover
XR0250855	Blue cover
XR0250850	White cover
XR0250875	Grey cover



# Alghamix II

Mechanical mixer for alginates, plasters and silicones



## APPLICATIONS

- Alghamix II allows for the mechanical mixing of alginates, plasters and silicones for dental use

## CHARACTERISTICS

- 2 speed rotation
- Ergonomic speed selector
- Bayonet bowl-fastener
- Available bowls: small 350 cc for alginate, large 600 cc for plaster
- Available bowl colours: grey, orange, green, light blue, navy blue, white
- Plate with 20-sheet mixing block for silicones
- ABS body

## ADVANTAGES

- 30% reduced mixing time when compared to manual mixing
- Reduced air incorporation during mixing
- Homogeneous bubble free mixing
- Constant bowl rotation guaranteed by the two speeds
- Structure and design specifically designed to guarantee maximum stability during use
- Ergonomic bowl position which allows for optimal operating conditions
- Easy to remove and easy to clean bowl
- Coloured bowls easily adaptable to clinic colours
- 600 cc bowl for plaster and silicone mixing plate usable for various purposes.
- 3 year warranty

For further information about which products can be used, please refer to the data sheets on our website: [www.zhermack.com](http://www.zhermack.com) about: alginate, dental stones and C-Silicones

## Technical Data

CODE	MODEL	SIZE (CM)	WEIGHT (KG)	VOLTAGE (V / HZ)	TOTAL POWER
C303230	Alghamix II - 230V	L17 / D27 / H21	3	230V±10% / 50-60 Hz	50 Watt
C303215	Alghamix II - 115V	L17 / D27 / H21	3	115V±10% / 50-60 Hz	50 Watt
C303231	Alghamix II - 230V UK plug	L17 / D27 / H21	3	230V±10% / 50-60 Hz	50 Watt



# Accessories



350 cc Alginat bowl  
(Alghamix II)



Silicone mixing disk



20 sheet mixing block



600 cc Plaster bowl  
(Alghamix II)

## Accessories

XR0250600	350 cc Alginat bowl - light blue	XR0250650	600 cc Plaster bowl - grey
XR0250601	350 cc Alginat bowl - orange	C300990	Fluo spatula (6 pcs.)
XR0250602	350 cc Alginat bowl - navy blue	C303030	Silicone mixing disk
XR0250603	350 cc Alginat bowl - green	XR0250670	20 sheet mixing block
XR0250604	350 cc Alginat bowl - white	C207200	Silicone mixing spatula
XR0250606	350 cc Alginat bowl - grey		



# Modulmix

Automatic A-Silicone mixer with a 5:1 mixing ratio



## APPLICATIONS

- Automatically mixes A-Silicones for impressions prepared in 5:1 mixing ratio cartridges (362-380-390 ml)

## CHARACTERISTICS

- Possibility of connecting numerous machines in-line
- Two dispensing speeds:
  - Normal: 70\* ml/min
  - Fast: 155\* ml/min
- Motorised plunger (forward & reverse) for changing cartridges (max 3 sec)
- Customizable side cills to match surgery decor (optional extra)
- Ergonomic design
- Two dispenser buttons
- Cartridge level indicator
- Retracting, finger-safe pistons to guarantee maximum safety standards
- Available in countertop or wall-mounted versions
- Available in 230V, 230V uk plug and 115V versions
- Compatible with all 5:1 systems currently available on the market

## ADVANTAGES

- With respect to manual mixers, the Zhermack system automatic mixing is easy, constant and offers higher quality
- With Modulmix, the mixing phase is notably reduced to give more product working time
- Modularity: the possibility to connect numerous machines in-line allows for the use of numerous materials simultaneously (heavy body - alginate replacement)
- Two dispensing speeds, fast for filling the tray, normal for filling a syringe
- Compact and linear design which guarantees reduced encumbrance upon working surfaces
- Transparent plastic cover allows for immediate viewing of both the material being used as well as the level of material remaining in the cartridge
- Two dispensing buttons located on either side of the Modulmix, for left & right handed operators
- 2 year warranty

\*Zhermack internal test

For further information about which products can be used, please refer to the data sheets on our website [www.zhermack.com](http://www.zhermack.com) about: hydrorise, colorise, elite HD+ and freealgin Maxi cartridges

## Technical Data

CODE	MODEL	SIZE (CM)	WEIGHT (KG)	VOLTAGE (V / HZ)	TOTAL POWER
C309030	Modulmix - 230V	L22.4 / D37.2/ H32	12	230V±10% / 50-60 Hz	160 Watt
C309035	Modulmix - 115V	L22.4 / D37.2/ H32	12	115V±10% / 50-60 Hz	160 Watt
C309031	Modulmix - 230V UK plug	L22.4 / D37.2/ H32	12	230V±10% / 50-60 Hz	160 Watt



# Accessories



Side cills colours (optional extras)



Modular configuration  
for the workstation



Configuration for the wall



Digital Timer

For further information and photos, please refer to the product data sheet on line at [www.zhermack.com](http://www.zhermack.com)

## Accessories

XR0240550	Lateral flaps colour light blue	XR0240510	Modularity kit
XR0240551	Lateral flaps colour orange	XR0240500	2-machine countertop support
XR0240552	Lateral flaps colour blue	XR0240505	1-machine countertop support
XR0240553	Lateral flaps colour green	XR0240530	Wall mounting kit for two Modulmix
XR0240554	Lateral flaps colour white	XR0240615	115V charger
XR0240555	Lateral flaps colour grey	XR0240630	230V charger
XR0240520	Wall-mounting kit	XR0240580	Digital timer Included with each Modulmix



# Zetaclave

Class B and S autoclaves



## APPLICATIONS

### Zetaclave B

- Sterilisation in surgery of solid instruments, hollow instruments (type A and B), packeted instruments and porous loads

### Zetaclave S

- Sterilisation in surgery of type B hollow instruments, solid instruments, packeted instruments and small porous loads

## CHARACTERISTICS

- Vacuum pump high performing two-stage
- LCD graphic display showing sterilisation cycles and phases
- 12 pre-set programs
- Stainless steel chamber
- Motorised closure with triple safety device
- Electronic vacuum drying
- Automatic loading of water with self-priming pump
- Ready for connection to demineraliser and automatic dirty water drainage
- Built-in printer
- Ready for connection to data logger
- M.T.S. (Memory test system) which allows the diagnosis of the last 10 cycles performed
- Instant vaporiser outside the chamber
- Thermal drying system
- Validation cycles: HELIX\*, BOWIE & DICK, VACUUM TEST
- Double tank: clean water and dirty water
- 2 year warranty

### Zetaclave B

- Vacuum pump high performing two-stage
- Fractionated vacuum

### Zetaclave S

- Vacuum pump two-stage
- Pre and post vacuum

\*Only for type B

For further information about which products can be used, please refer to the Zeta Hygiene data sheets on our website: [www.zhermack.com](http://www.zhermack.com)

## Technical Data - Zetaclave B

CODE	MODEL	SIZE (CM)	WEIGHT (KG)	ALTITUDINE MAX. DI UTILIZZO	INTERNAL DIMENSIONS	TANK CAPACITY	VOLTAGE (V / HZ)	TOTAL POWER
C306550	Zetaclave B 18 ltr	L45 / D61.5 / H40	45	0-2000 m	236 x 381	4.5 ltr	230V±10% / 50-60 Hz	2400 Watt
C306552	Zetaclave B 23 ltr	L45 / D69 / H40	50	0-2000 m	236 x 530	4.5 ltr	230V±10% / 50-60 Hz	2400 Watt

## Technical Data - Zetaclave S

CODE	MODEL	SIZE (CM)	WEIGHT (KG)	ALTITUDINE MAX. DI UTILIZZO	INTERNAL DIMENSIONS	TANK CAPACITY	VOLTAGE (V / HZ)	TOTAL POWER
C306554	Zetaclave S 18 ltr	L45 / D61.5 / H40	40	0-2000 m	236 x 381	4.5 ltr	230V±10% / 50-60 Hz	2400 Watt
C306556	Zetaclave S 23 ltr	L45 / D69 / H40	45	0-2000 m	236 x 530	4.5 ltr	230V±10% / 50-60 Hz	2400 Watt

## Standard Zetaclave B - S equipment

1 reversible anodised aluminium tray holder  
 4 trays  
 1 funnel  
 2 water draining pipes

1 water loading pipe with filter  
 1 cleaning sponge  
 1 tray extraction handle



# Accessories

## ADVANTAGES

- The stainless steel chamber, pressed in a single block, guarantees the maximum attainable levels of hygiene.
- The external treatment guarantees greater resistance and a long lifespan
- The motorised door is easy to open and guarantees high levels of safety thanks to triple protection and selfregulation
- The built-in thermal printer allows the user to verify all the sterilisation cycles.
- The use of the mineraliser allows automatic water loading and does not require the daily intervention of the operator (optional)
- The reversible tray holder contains up to 4 trays and can be rotated, allowing the insertion of two cassettes for implantology
- The possibility to make use of the STS data logger allows information management and the storage of the cycles performed (optional)



Colour door (optional)



Demineraliser



Electric Distiller



STS data logger



Heat sealer



Osmosis

For further information and photos, please refer to the product data sheet on line at [www.zhermack.com](http://www.zhermack.com)

## Accessories

XR0150060	Manual thermosealing machine	XR0150020	Bowie and Dick test
XR0150090	Electric distiller	XR0150050	Chemical indicator (250 pcs.)
XR0150070	Demineraliser	XR0150040	Spores (20 pcs.)
XR0150100	Osmosis	XR0150160	Roll of printer paper
XR0150110	STS data logger USB	XR0150140	Bacterial filter
XR0150120	Reversible tray holder for 18 litres Zetaclave		
XR0150130	Reversible tray holder for 23 litres Zetaclave		
XR0150030	Helix Test (100 pcs.) - Only for type B		



# Elite® mix

Mixer for plaster and investments



## APPLICATIONS

- Vacuum-sealed mixer for investments with lost-wax casting techniques
- Vacuum-sealed mixer for plaster models

## CHARACTERISTICS

- Electronic control with microprocessor and LCD alphanumeric display
- MFC control system (multifunctional control handpiece)
- 10 different programs which can be set with the following parameters:
  - spatulation time
  - spatulation speed between 100 and 450 rev/min
  - pre-spatulation enabling
  - pre-insertion vacuum
  - interval time allowing spatula direction rotation change
- Electronic vacuum control and double filter
- Wall or bench-mounted with appropriate stand (optional)
- 200 and 1000 cc bowls (optional extras)
- Magnetic sensor for bowl removal
- "Safety" system for bowl removal in case of power failure

## ADVANTAGES

- Fast, simple, intuitive programming thanks to the LCD display and the multifunction control handpiece
- 10 personalisable programs, 6 of which are pre-set for Zhermack dental stones
- Maintenance is not necessary for the oil free vacuum pump
- Even and bubble-free mixture guaranteed by the multifunction software and electronic vacuum control
- A magnetic sensor detects the presence of the bowl and automatically activates the mixing programme. Everything can be handled with just one hand!
- Elite Mix bowls' angles are rounded for recovering the mixture and for easy cleaning operations
- Even and bubble-free mixture guaranteed by the multifunction software and electronic vacuum control
- A magnetic sensor detects the presence of the bowl and automatically activates the mixing programme. Everything can be handled with just one hand!
- Elite Mix bowls' angles are rounded for recovering the mixture and for easy cleaning operations
- 2 year warranty

For further information about which products can be used, please refer to the Elite Dental Stone data sheets on our website: [www.zhermack.com](http://www.zhermack.com)

## Technical Data

CODE	MODEL	SIZE (CM)	WEIGHT (KG)	SPEED (RPM)	VOLTAGE (V / HZ)	TOTAL POWER	VACUUM LEVEL
C305120	Elite® mix - 230V	L18 / D24 / H36	8	100 - 450	230V±10% / 50 Hz	150 Watt	600 mmHg
C305125	Elite® mix - 115V	L18 / D24 / H36	8	100 - 450	115V±10% / 60 Hz	150 Watt	600 mmHg

## Standard components

XR0011500	1 lid with 500cc Elite® mix spatula
XI0010630	1 500 cc Elite® mix bowl



# Accessories



Bench mounted with stand (optional)



200 cc

500 cc  
(supplied)

1000 cc

## Accessories

XR0011510	Bench-mounted Elite® mix stand
XR0011520	Lid with 200 cc mixing spatula
XR0011500	Lid with 500 cc mixing spatula
XR0011530	Lid with 1000 cc mixing spatula
XI0010640	200 cc bowl
XI0010630	500 cc bowl
XI0010650	1000 cc bowl



# Doublemix

Automatic mixer for duplication A-Silicones



## APPLICATIONS

- Automatically mixes the liquid silicones (A-SILICONE) used for duplicating models in laboratories

## CHARACTERISTICS

- Dosing pump with 1:1 mixing ratio
- Adjustable plate for holding mixing tip
- Anodised aluminium support with flask alignment
- Adjustable container support brackets
- Quick container insertion with flow shut-off valve
- Provision for direct connection to all Elite Double pack sizes (1kg, 5kg, 10kg)
- Sintered bayonet filters for air venting from tanks
- Optional clear containers, 2kg capacity

## ADVANTAGES

- Use of Doublemix in combination with elite double extra fast allows for model duplications in little more than 6½ minutes
- Thanks to its state of the art dosing pump, doublemix guarantees a drip-free, bubble-free surface allowing for repeated duplications unlike manual mixing machines
- The adjustable disk allows you to align the flow, and facilitates insertion of the mixing tip
- The aluminium support helps position the flask correctly on the work surface
- The quick insertion system and flow shut-off valves prevent the formation of air bubbles during liquid delivery
- Adjustable bracket design is compatible with all of Zhermack's duplication silicone pack sizes
- The start button is specially positioned to facilitate filling the flask
- 2 year warranty

For further information about which products can be used, please refer to the Elite Double Line data sheets on our website: [www.zhermack.com](http://www.zhermack.com)

### Technical data

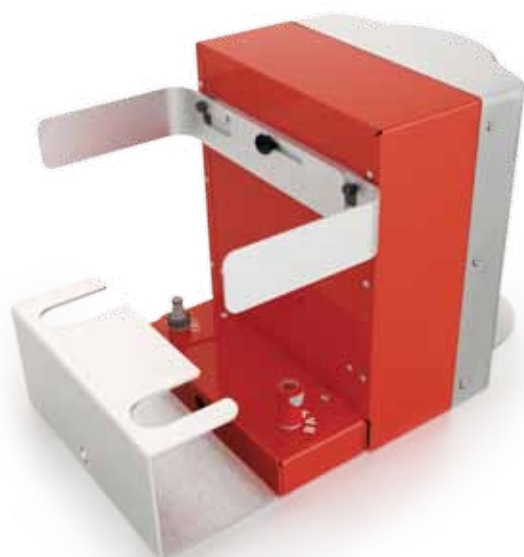
CODE	MODEL	SIZE (CM)	WEIGHT (KG)	VOLTAGE (V / HZ)	TOTAL POWER
C309020	Doublemix - 230V	L26.5 / D36/ H33	17	230V±10% / 50-60 Hz	260 Watt
C309021	Doublemix - 115V	L26.5 / D36/ H33	17	115V±10% / 50-60 Hz	260 Watt
C309022	Doublemix - 230V UK plug	L26.5 / D36/ H33	17	230V±10% / 50-60 Hz	260 Watt

### Standard components

XR0240040	Adapter with quick connection to male base for 1kg Elite Double bottle	C202070	Yellow mixing tips tips (x48)
XR0240050	Adapter with quick connection to female catalyst for 1kg Elite Double bottle	XR0240150	Bayonet filters for air venting
		XR0240140	Working area support plate with centred flask
		XH9900010	Allen wrench for mixing maintenance locking



# Accessories



Bracket Kit



2 kg clear container

Quick connection for  
elite double 5 - 10 kg tanks

## Accessories

XR0240030	Bracket Kit + front 5 - 10 kg elite double tank supports (2 pcs.)	XR0240050	Adapter with quick connection to female catalyst for 1kg elite double bottle
XR0240010	Plug with male base quick connection for elite double 5 - 10 kg tanks	XR0240070	2 kg clear container with female catalyst quick connection
XR0240020	Plug with female catalyst quick connection for elite double 5 - 10 kg tanks	XR0240060	2 kg clear container with male base quick connection
XR0240040	Adapter with quick connection to male base for 1kg elite double bottle	C202070	Mixing tips small/yellow (x48)



# Giga

Porcelain furnaces and combination unit



Giga Press with plate support  
OPTIONAL (XR0160810)

## APPLICATIONS

- Furnaces for the firing of ceramics on metal-ceramic, all ceramics, ceramic- zirconium, ceramic-aluminium, and ceramic-titanium restorations

## CHARACTERISTICS

### Giga

- Innovative design and state-of-the-art electronics
- Large graphic display
- 200 programs available, 25 of which are pre-set for the most common traditional ceramics
- Ergonomic membrane keyboard
- Incorporated empty sensor
- 13 parameters which the user can set for each program
- HELP function to aid the operator with programming
- Equipped with special functions to modify the program being carried out, to re-fire the ceramics if necessary and to quickly cool down the chamber
- Device for automatic temperature calibration device available (optional)

### Giga press

- Same characteristics as the Giga furnace, but also equipped with a pneumatic system for carrying out pressable ceramics
- Out of 200 programs, 20 are specific for the pressable ceramics
- Need for a compressed air connection

For further information and photos, please refer to the product data sheet on line at [www.zhermack.com](http://www.zhermack.com)

## Technical data

CODE	MODEL	SIZE (CM)	WEIGHT (KG)	TEMPERATURE RANGE	RATE OF RISE	PROGRAMS	VOLTAGE (V / HZ)	TOTAL POWER
C306606	Giga	L30 / D47 / H67	19	300 °C 1200 °C	from 10°C/min to 180°C/min	200	230V±10% / 50-60 Hz	1600 Watts
C306607	Giga press	L30 / D47 / H67	20	300 °C 1200 °C	from 10°C/min to 180°C/min	200 (20 for pressure regulation)	230V±10% / 50-60 Hz	1600 Watts

## Standard components

XH9900130	Key for plate movement in the case of voltage loss	XR0160620	Cylinder preparation sheets (Giga press)
XR0160610	Cylinder preparation kit (Giga press)	XR0160630	Pump vacuum connection hose
		XR0160660	Giga refractory plate

## Accessories

XR0160650	Base for temperature self-calibration	XI0160860	Cylinders in silicone 200 cc
XI0160870	Cylinders in silicone 100 cc	XR0160810	1 plate support



# Satovac 1

Vacuum pump 4 m<sup>3</sup>/hour



Vacuum pump Satovac 1

## Giga

### ADVANTAGES

- Innovative structure of the chamber allows greater thermal performance which is advantageous for temperature control which results as being more precise in both the static and dynamic phases.
- A diagnostics menu allows the user to verify all the functions of the furnace in real time
- The HELP function aids in Giga press use
- Pre-set programs for all the most common ceramics
- The possibility of managing plate opening and closing modes in detail
- The injection phase periodically alternates thrust and waiting phases which optimise the result of the pressable ceramic even with minimum thicknesses.
- 2-year warranties

## Satovac 1

### APPLICATIONS

- For all applications where a good level of vacuum is required (760 mbar max)

### CHARACTERISTICS

- Rotary vane pump with oil lubrication
- Flow rate: 92 litres/minute 4m<sup>3</sup>/hour
- Maximum vacuum which can be reached: 760 mbar

### ADVANTAGES

- Reaches the maximum vacuum in a very short time
- 1-year warranty

### Technical data

CODE	MODEL	WEIGHT (KG)	VOLTAGE (V / HZ)	NOMINAL RATE	FINAL VACUUM	OIL FILLING	MONOPHASE MOTOR POWER	TOTAL POWER
C306700	Satovac 1	10.5	230V±10% / 50-60 Hz	92 ltr/min	0.1 mbar	450 cc	0.18 kW (50 Hz) 0.24 CV-1/4 Hp	185 Watt

### Standard components

Oil bottle for first loading



# Dune ECOTECH

Micro-sandblasting machine with recirculating sand system



For further information and photos, please refer to the product data sheet on line at [www.zhermack.com](http://www.zhermack.com)

## Standard components

XH9930020	Short nozzle, Ø 0.6 (only in Dune 3 ECOTECH)
XH9930030	Short nozzle, Ø 0.8 mm
XH9930040	Short nozzle, Ø 1.3 mm
XH9930050	Recycling nozzle, Ø 3 mm
XI0060070	Sandblasting gloves

## Technical data

CODE	MODEL	SIZE (CM)	NUMBER OF TANKS	WEIGHT (KG)	TANK CAPACITY	OPERATION PRESSURE	VOLTAGE (V / HZ)	TOTAL POWER
C305618	Dune 2 ECOTECH	L49 / P50 / H42	2	13	1000 cc	1-6 bar	230V-115V*±10%/50-60 Hz	14 Watt
C305619	Dune 3 ECOTECH	L49 / P50 / H42	3	14	1000 cc	1-6 bar	230V-115V*±10%/50-60 Hz	14 Watt

\* Using dune ECO TECH at 115 V~ requires 115 V~ extractor with adapter.

## Accessories

XR0060580	Long nozzle Ø 0.6 mm	XR0060550	Compressed air pistol
XR0060570	Long nozzle Ø 0.8 mm	XR0061560	Glass protection film (3 pcs.)
XR0060560	Long nozzle Ø 1.3 mm	XR0061570	LED support protection film (3 pcs.)
XB0060800	Cylinder 25-70 µm for Dune 2 ECOTECH - Red	XI0990230	Paper filters for SAB 1000
XB0060830	Cylinder 70-125 µm for Dune 2 ECOTECH - Yellow	XR0061550	Double suction kit (fitting + tubes)
XB0060840	Cylinder 125-250 µm for Dune 2 ECOTECH - Green	C305608	Vacuum SAB 1000

The full list of oxides and microspheres can be found in the product sheet of Zeta Sand.

## APPLICATIONS

- Cleaning, polishing and roughening of prosthetic materials

## CHARACTERISTICS

- Large chamber (25 l) with ergonomic design
- Adjustable LED lighting with interchangeable protection film
- 1000cc tanks with level indicator and air vents
- Pneumatic system to adjust sand flow using calibrated dosing nozzles in the tanks
- Immediate flow shut-off valves in the pneumatic system
- Sand recirculating system with its own handpiece and support
- Pressure regulator and sand selector positioned in the sandblasting chamber
- Plug to connect/activate the suction
- Double suction connection (right and left)
- Ergonomic handles with tungsten carbide nozzles, available in different shapes and diameters
- Inlet anti-condensation filter with manometer
- Feet are adjustable to alter the height
- 3<sup>rd</sup> tank (optional for Dune 2) in different grain size ranges
- Long, high-precision nozzles in 0.6, 0.8, 1.3 mm diameter (optional extras)
- Compressed air gun in chamber (optional)

## ADVANTAGES

- Very low sand consumption when compared to standard sandblasters
- Powerful, homogeneous lighting
- The ergonomic design of the handles and nozzles makes sandblasting more efficient and accurate
- Possibility to install a third, optional tank on the Dune 2 ECOTECH model. The operator is in charge of this installation
- Suction is equally efficient from either side of the machine
- Suction can be activated when the sandblaster is switched on
- Tanks do not have to be topped up so frequently
- 2-year warranty



# Dune

## Module sandblasting machine



For further information and photos, please refer to the product data sheet on line at [www.zhermack.com](http://www.zhermack.com)

### Standard components

XI0060720	Glass protection sheets (2 pcs.)
XH9900100	Ø 0.6 mm nozzle (1 pc.)
XH9900120	Ø 1.3 mm nozzle (1 pc.)
XH9900110	Ø 0.8 mm nozzle (Dune 3 - 3 pcs.) - (Dune 2 - 2 pcs.)

### Technical data

CODE	MODEL	SIZE (CM)	NUMBER OF TANKS	WEIGHT (KG)	TANK CAPACITY	OPERATION PRESSURE	VOLTAGE (V / HZ)	TOTAL POWER
C305613	Dune 2	L48 / D62 / H41	2	35	500 cc	0.5-6 bar	230V±10% / 50-60 Hz	50 Watt
C305614	Dune 3	L48 / D62 / H41	3	44	500 cc	0.5-6 bar	230V±10% / 50-60 Hz	50 Watt

### Accessories

XB0060650	Additional module, third cylinder for Dune 2
XR0061540	Dune glass protection (5 pcs.)

C305608	SAB 1000 Extractor for sandblasters
---------	-------------------------------------

### APPLICATIONS

- Multiple module sandblasting machines for sanding prosthetic restorations. Used for cleaning, roughening, polishing and surface treatments
- Recommended for users of pressable ceramics

### CHARACTERISTICS

- Dune 2: two modules  
Dune 3: three modules
- Tungsten carbide nozzles (0.8 mm Ø as standard) long type
- Pipe throttle valve for instant sand flow blockage
- Electrical "sandblasting machine-aspirator" connection outlet
- Possibility of aiming lighting inside the chamber
- Ergonomic design
- Pedal control
- Exit pipe for connection to the extractor
- Pressure regulator and pressure gauge for each cylinder
- Protective sheet placed on closure window
- Each module supplied with a vibrating system
- Switch for rapid change of sandblasting positioned inside the chamber
- Three nozzles of different diameters:  
Ø 0.6 mm nozzle (for grit from 25 µm to 70 µm)  
Ø 0.8 mm nozzle (for grit from 70 µm to 125 µm)  
Ø 1.3 mm nozzle (for grit from 125 µm to 250 µm)

### ADVANTAGES

- The Venturi system from DUNE 2 - 3, together with a vibrating surface, allows perfect sandblasting at all pressures between 0.5 and 6 bar (traditional sandblasters operate correctly after 2 bar)
- Very low consumption guaranteed by the presence of the Venturi system and the instant sand flow block system
- Thanks to the pressure regulator and pressure gauge for each cylinder, it is not necessary to change the working parameters each time the system is used
- 2-year warranty



# SAB 1000

Extractors for sandblasting machines and model trimmers



## APPLICATIONS

- Extractor to be combined with sandblasting machines to suck up dust during sandblasting operations

## CHARACTERISTICS

- Excellent power and dependability
- Guarantees filtering up to 0.3 µm
- Specific dual layer paper filters for extra fine sand

## ADVANTAGES

- Optimised sand extractor from the sandblasting chamber
- Dependable, easy to clean and maintain
- Hygienic and easy to empty
- Powerful and constant extraction
- 1-year warranty

## Technical data

CODE	MODEL	SIZE (CM)	AIR FLOW	WEIGHT (KG)	LOW PRESSURE (mBar)	VOLTAGE (V / HZ)	TOTAL POWER
C305608	SAB 1000 Extractor for sandblasting machines	L42 / D42 / H56	118 / 171 m³/h	9	190 / 210	230±10% / 50-60	1000 Watts
C305903	SAB 1000 G Extractor for dry version model trimmers	L42 / D42 / H56	118 / 171 m³/h	9	190 / 210	230±10% / 50-60	1000 Watts

## Accessories

XR0060010	Triple filter bag (for SAB 1000 - 10 pcs)
XR0090030	Bag (1 pc)



# Zeta Sand

Aluminium oxide and glass beads for sanding



## APPLICATIONS

- Abrasion (aluminium oxide) and polishing (glass beads) of surfaces

## CHARACTERISTICS

- 1kg triple layer aluminium single refill bags
- High degree of sieving
- Wide range of grain sizes available Packaged in boxes of 5 x 1kg bags

## ADVANTAGES

- Raw material quality ensured by a high level of sieving
- Hermetically hot sealed aluminium bag safeguards sand properties for the entire life cycle of the product
- Single refill 1kg packaging preserves sand from moisture, a main cause of sandblasting machine malfunction
- Wide range of grain sizes allows dental technicians to perform any kind of sanding

### Packaging

C308200	Aluminium oxide 5 x 1kg bag 25 µm
C308202	Aluminium oxide 5 x 1kg bag 50 µm
C308204	Aluminium oxide 5 x 1kg bag 75 µm
C308206	Aluminium oxide 5 x 1kg bag 90 µm
C308208	Aluminium oxide 5 x 1kg bag 110 µm
C308210	Aluminium oxide 5 x 1kg bag 125 µm
C308212	Aluminium oxide 5 x 1kg bag 150 µm
C308214	Aluminium oxide 5 x 1kg bag 180 µm
C308216	Aluminium oxide 5 x 1kg bag 250 µm
C308218	Glass beads 5 x 1kg bag 40/70 µm
C308220	Glass beads 5 x 1kg bag 90/150 µm
C308222	Glass beads 5 x 1kg bag 150/250 µm



# Polimer 180

Electronic pressurised polymerizer



## APPLICATIONS

- Firing of acrylic resins at variable pressure
- Cylinder pressurisation

## CHARACTERISTICS

- Front panel display shows polymerizer temperature, time and pressure
- Up to 10 memorisable programs
- Setting of working time from 1 minute to 99 hours
- 100% stainless steel support structure
- Safety microswitch which detects opening of lid
- Internal machine safety valve
- Equipped with filter with air pressure regulator
- Self-locking lid closure
- Polymer are able to contain 2 self-standing medium size flasks
- Maximum working pressure 6 bar
- Precise and flexible electronic control allow an optimal treatment of resins

## ADVANTAGES

- Robust stainless steel structure which makes the equipment extremely dependable
- Satisfies all technical requirements requested for resin treatment
- Durable and easy maintenance
- 4 discharge cycles (air/water) can be set and can be combined with 2 cooling cycles (slow/fast)
- 1-year warranty

For further information about which products can be used, please refer to the Resins Laboratory Line data sheets on our website: [www.zhermack.com](http://www.zhermack.com)

### Technical data

CODE	MODEL	SIZE (CM)	WEIGHT (KG)	BASIN SIZE (CM)	VOLTAGE (V / HZ)	TOTAL POWER
C305702	Polimer 180 Polymerizer	L41 / D38 / H30	25	Ø 18 / H14	230V±10% / 50-60 Hz	1600 Watts max

### Standard components

XD0070200	Stainless perforated work holder for polimer 180
XI0070040	5 litres polythene drum

### Accessories

XI0070030	Work holder pliers for polimer 86 - 180 (4 pcs.)
XR0070095	Work holder support with pliers for polimer 180



# Prothyl polimer

Boiling Polymerizer for acrylic resins



## APPLICATIONS

- Polymerization of acrylic resins

## CHARACTERISTICS

- Basin and internal parts in stainless steel
- Capacity of up to 8 self-standing medium size flasks
- Cover closure with washer
- Electronic microprocessor control complete with graphic display which manages the equipment
- Up to 10 different polymerization programs can be set. To help the user, the first 2 programs are pre-set for the polymerization of Zhermack resins
- 5 programmable phases
- Parameters set per each phase: temperature and maintenance time
- Equipped with practical tap for draining water

## ADVANTAGES

- Extremely practical and quick due to the programmable polymerization programs
- Excellent static and dynamic precision due to the electronic control with microprocessor
- The machine's high quality ensures a longer working life
- 2-year warranty

For further information about which products can be used, please refer to the Resins Laboratory Line data sheets on our website: [www.zhermack.com](http://www.zhermack.com)

### Technical data

CODE	MODEL	SIZE (CM)	WEIGHT (KG)	BASIN SIZE	NUMBER OF PROGRAMS	VOLTAGE (V / HZ)	TOTAL POWER
C305707	Prothyl polimer	L17 / D43 / H40	7	L15.5 / D31 / H26	10	230V±10% / 50-60 Hz	1200 Watts







# Quasar

Infrared welding machine



Quasar plus

Electrodes

\*Argon is not supplied with this machine. Ask a trusted supplier.

The system is not suitable for precious alloys with a low melting point below 1050° and base-metal alloys with a high nickel content of >35%

## APPLICATIONS

- Braze welding of precious metals and base alloys at high temperatures without direct flame

## CHARACTERISTICS

- **Quasar** - Production of thermal energy using an optical system of infrared light capable of generating a maximum temperature of 1350 °C
- Accurate focus of thermal energy in an optimum welding area of approximately one cm in diameter
- Power adjustment system which gives total control of the heating temperature
- Precise mechanical centring system for accurate focal aiming of the elements to be welded
- Efficient extraction system for fumes and gases produced during soldering
- Electrical rotation of the support plate by means of a joystick to facilitate the internal welding process
- Three-sided shielding allowing viewing of the welding process
- **Quasar plus** - Quasar model with the addition of pedal control operation for spot welding of the metal structure in argon\* environments

## ADVANTAGES

- Quick and easy to learn welding method
- Quasar - Quasar plus infrared welding avoids any combustion processes and related oxidation during the heating phase
- The Quasar plus welding process is faster with respect to traditional methods (laser welding 25 - 30 min - Quasar plus welding 6 min.)
- 1-year warranty

## Technical data

CODE	MODEL	SIZE (CM)	WEIGHT (KG)	MAX TEMPERATURE	VOLTAGE (V / HZ)	TOTAL POWER
C306800	Quasar Infrared welding machine	L25 / D36 / H50	27.9	1350°C	230V±10% / 50-60 Hz	1200 Watt
C306810	Quasar plus Infrared welding machine with spot welding device	L25 / D36 / H50	29	1350°C	230V±10% / 50-60 Hz	1200 Watt

## Standard components - Quasar plus

XR0180110	Electrodes for Cr/Co (for ceramics) Ø 0.8 mm (3 pcs.)
XI0180300	Protective glasses

## Accessories

XR0180040	Additional spot welding system (for Quasar)	XR0180080	Electrodes for Cr/Co (for removable prostheses) Ø 0.5 mm (10 pcs.)
XR0180050	Electrodes for Cr/Co (for ceramics) Ø 0.8 mm (10 pcs.)	XR0180090	Electrodes for Au (for gold alloy) Ø 0.8 mm (10 pcs.)
XR0180070	Electrodes for Cr/Co (for ceramics) Ø 0.5 mm (10 pcs.)	XR0180100	Electrodes for Au (for gold alloy) Ø 0.5 mm (10 pcs.)
XR0180060	Electrodes for Cr/Co (for removable prostheses) Ø 0.8 mm (10 pcs.)	XI0180300	Protective glasses



# DM

## Multiprogram pre-heating furnaces



### APPLICATIONS

- For the pre-heating of any type of investment cylinders

### CHARACTERISTICS

- Pipe heating system: the resistors are housed inside the special refractor pipes
- Electronic microswitch: detects the opening of the hatch, interrupting the power supply to the resistors
- Preset aspirator command to allow release of fumes
- Possibility to memorise up to 10 different cycles, each with up to 4 positions
- Electronic temperature control with microprocessor which allows the following parameters to be set for each program:
  - temperature
  - maintenance temperature
  - Speed at which temperature rises (expressed in °C/min)
  - Extractor OFF temperature
- Automatic management of the extractor depending on program
- Delayed start with the possibility of setting the day and time of furnace activity
- Maximum working temperature 1100 °C

### ADVANTAGES

- The pipe heating system is more efficient compared to the traditional muffle system
- Low energy consumption
- Greater dependability over time
- Lighted LED display makes using this machine quick and easy
- Possibility of modifying a program while it is running
- 1-year warranty

### Technical data

CODE	MODEL	SIZE (CM)	INT. CHAMBER SIZE (CM)	WEIGHT (KG)	CYLINDER CAPACITY	MAX. HEAT. SPEED FROM 0 TO 900 °C	VOLTAGE (V / HZ)	TOTAL POWER
C305300	DM 30	L28 / D32 / H46	L12 / D16 / H9.5	15	4-3X 2-9X	52:00 min	230V±10% / 50-60 Hz	1550 Watt
C305304	DM 40	L35 / D37 / H49	L17 / D16 / H11	26	6-3X 4-9X	60:00 min	230V±10% / 50-60 Hz	2000 Watt
C305308	DM 50	L35 / D47 / H49	L17 / D26 / H11	30	11-3X 6-9X	60:00 min	230V±10% / 50-60 Hz	2400 Watt

### Standard components

XE9900150	Socket for hood	XB0030370	Square refractory tube (DM 30) 2 pcs.
XI0030073	Ribbed refractory plate (DM 40)	XI0030070	Ribbed refractory plate (DM 30)
XB0030180	Square refractory tube (DM 40-50) 2 pcs.	XI0030030	Vent
XI0030075	Ribbed refractory plate (DM 50)		



# D

Single program, single position  
pre-heating furnaces



## APPLICATIONS

- For the pre-heating of rapid-use investment cylinders used for the fusion of metal alloys

## CHARACTERISTICS

- Pipe-heating system: the resistors are housed inside the refractor pipes
- Electronic microswitch: detects the opening of the hatch, interrupting the power supply to the resistors
- Outlet provided to control aspirator's evacuation of fumes
- Temperature control with an electronic microprocessor which allows the setting of the following parameters for each program:
  - temperature
  - maintenance time
  - Speed at which temperature rises (expressed in °C/min)
  - aspirator OFF temperature (optional)
- Delayed start possibility allowing the user to set delayed furnace start at a selected day and time

## ADVANTAGES

- This furnace is suitable for quick investments: it brings together the advantages of a pipe heating unit with the essentials of electronics
- The pipe heating system is more efficient with a chamber more efficient compared to the traditional muffle system
- Low energy consumption
- Greater dependability over time
- 1-year warranty

While stocks last

### Technical data

CODE	MODEL	SIZE (CM)	INT. CHAMBER SIZE (CM)	WEIGHT (KG)	CYLINDER CAPACITY	MAX. HEAT. SPEED FROM 0 TO 900 °C	VOLTAGE (V / HZ)	TOTAL POWER
C305302	D 30	L28 / D32 / H46	L12 / D16 / H9.5	15	4-3X 2-9X	52:00 min	230V±10% / 50-60 Hz	1550 Watt
C305306	D 40	L35 / D37 / H49	L17 / D16 / H11	26	6-3X 4-9X	60:00 min	230V±10% / 50-60 Hz	2000 Watt
C305310	D 50	L35 / D47 / H49	L17 / D26 / H11	30	11-3X 6-9X	60:00 min	230V±10% / 50-60 Hz	2400 Watt

### Standard components

XI0030030	Vent	XB0030180	Square refractory tube (D 40-50) 2 pcs.
XI0030070	Ribbed refractory plate (D 30)	XB0030370	Square refractory tube (D 30) 2 pcs.
XI0030073	Ribbed refractory plate (D 40)	XE9900150	Socket for hood
XI0030075	Ribbed refractory plate (D 50)		



# Extractor for models D & DM

Extractor pipe system for D / DM series of furnaces

APPLICATIONS

- Connected to the D/DM series of furnaces, this facilitates the extraction of fumes/gases from the pre-heating chamber

CHARACTERISTICS

- Power-on and power-off can be programmed using software
- Compatible for connection to the 30-40-50 model furnaces

ADVANTAGES

- Assists the discharge of fumes/gases from the chamber, facilitating a healthier working environment
- 1-year warranty



Accessories

C305319	Extractor for models D & DM (VOLTAGE 230V±10% / 50-60 Hz - TOTAL POWER 30 Watt)



# DE

Single program pre-heating furnace  
with two positions



## APPLICATIONS

- For the pre-heating of rapid-use investment cylinders used for the fusion of metal alloys

## CHARACTERISTICS

- Traditional heating system with muffle
- Electronic microswitch: detects the opening of the hatch, interrupting the power supply to the resistors
- Firing program: allows the user to program a firing cycle composed of two positions for each of which these following parameters can be set:
  - temperature
  - maintenance time
  - Speed at which temperature rises (expressed in °C/min)
- Delayed start possibility allowing the user to set delayed start at a selected day and time
- Maximum working temperature 1100 °C

## ADVANTAGES

- Easy-to-use electronic control
- Highly resistant monocoque structure
- 1-year warranty

## Technical data

CODE	MODEL	SIZE (CM)	INT. CHAMBER SIZE (CM)	WEIGHT (KG)	CYLINDER CAPACITY	MAX. HEAT. SPEED FROM 0 TO 900 °C	VOLTAGE (V / HZ)	TOTAL POWER
C305315	DE 1	L25 / D32 / H43	L12 / D16 / H9.5	15	4-3X 2-9X	62:00 min	230V±10% / 50-60 Hz	1700 Watt
C305316	DE 2	L36 / D37 / H48	L17 / D16 / H11	26	6-3X 4-9X	82:00 min	230V±10% / 50-60 Hz	2400 Watt
C305317	DE 3	L36 / D47 / H48	L17 / D26 / H11	30	11-3X 6-9X	92:00 min	230V±10% / 50-60 Hz	2800 Watt

## Standard components

XI0030030 Vent



# VAP 1

High performance pressurised steam and hot water cleaner



## APPLICATIONS

- For cleaning or steaming prosthetic restorations by means of a flow of steam and/or pressurised hot water

## CHARACTERISTICS

- Automatic water loading from the water supply or an external tank
- Electronic control by means of a microprocessor allowing the user to set a variable pressure between 0-11 bar
- Choice of steam or hot water by means of a pedal control
- The quantity of delivered steam and water controlled with a regulator handpiece on the machine
- Steam and hot water supply from a gun or fixed nozzle
- Designed to be wall-mounted
- Stainless steel boiler with 4.9 litres total capacity, of which 4 are water rechargers
- Pressure regulator and certified safety valve shown with a display light
- Stainless steel structure

## ADVANTAGES

- Temperature and efficiency guarantee enhances cleaner surfaces on all restorations
- The machine's high quality ensures a longer working life
- 1-year warranty

While stocks last

### Technical data

CODE	MODEL	SIZE (CM)	CAPACITY	WEIGHT (KG)	VOLTAGE (V / HZ)	TOTAL POWER
C305204	VAP 1	L56 / D43 / H43	4.9 ltr	28	230V±10% / 50 Hz	2200 Watts



# VAP 6

Steam cleaners



## APPLICATIONS

- VAP 6 - VAP 6 A generate a flow of steam or pressurised hot water to be used for the cleaning of dental prosthetic restorations

## CHARACTERISTICS

- Stainless steel boiler with a total capacity of 4 litres, 2.5 of which reload water for both models
- VAP 6 - Steam operation with a button on the gun
- VAP 6 A - Steam and hot water operation with a button on the gun
- Steam flow regulated with a handpiece on the machine
- VAP 6 - Manual water reloading
- VAP 6 A - Automatic water loading from the pipeline system or from an external reserve
- Pressure regulator and certified safety valve with a pilot light located on the front
- VAP 6 - VAP 6 A - Electronic control of water level
- Operating pressure 6 bar

## ADVANTAGES

- Higher operating pressure (6 bar) allows for perfect surface cleaning
- Easy handling
- The machine's high quality ensures a longer working life
- 1-year warranty

## Technical data

CODE	MODEL	SIZE (CM)	WEIGHT (KG)	CAPACITY	GUN COMMAND VOLTAGE (V / HZ)	TOTAL POWER
C305201	VAP 6 - 230V	L29 / D46 / H42	15	4 ltr	230V±10% / 50 Hz	1700 Watts
C305202	VAP 6 - 230V micromotor with pedal control	L29 / D46 / H42	15	4 ltr	230V±10% / 50 Hz	1700 Watts
C305205	VAP 6 - 115V	L29 / D46 / H42	15	4 ltr	115V±10% / 60 Hz	1700 Watts
C305203	VAP 6 A - 230V	L29 / D46 / H42	15	4 ltr	230V±10% / 50 Hz	1700 Watts
C305210	VAP 6 A - 230V micromotor with pedal control	L29 / D46 / H42	15	4 ltr	230V±10% / 50 Hz	1700 Watts

## Standard components

XR0020065	Nozzle set for VAP 6 - VAP 6 A
XI0020255	Water filler funnel (only VAP 6)

## Accessories

XR0024110	Measuring Jug For Steam Cleaners (VAP 6 - VAP 6 A)
-----------	--



# AD 8

Water softener for steam generators



## APPLICATIONS

- Water softener recommended for steam cleaners with water loaded through the pipeline system

## CHARACTERISTICS

- Constructed in stainless steel
- Outgoing water flow is always maintained. It is even possible to supply water to connected machines during resin regeneration
- Regeneration by means of NaCl (table salt)

## ADVANTAGES

- The water softener guarantees a longer life to the steam cleaner
- 1-year warranty

## Technical data

CODE	MODEL	SIZE (CM)	MAXIMUM FLOW RATE	WEIGHT (KG)	WATER SUPPLY TEMPERATURE	INCOMING WATER PRESSURE
C305208	AD 8 for VAP	L30 / D20 / H40	900 ltr/h	8.5	4°C Min. - 15°C Max.	Min. 1 bar - Max. 8 bar



# SQM

Wet and dry model trimmers

## APPLICATIONS

- SQM 25 N is used for wet model trimming
- SQM 25 SN is used for dry model trimming

## CHARACTERISTICS

**SQM 25 N**

- Water disk cooling system
- Front water flow regulator
- Aluminium bodywork
- Abrasive disc reinforced Bakelite under FEPA standards, AR 30, Ø 250 mm x 8 mm
- Safety button as per CE regulation
- Ready to secure to the work surface

**SQM 25 SN**

- Diamond grinding wheel which allows dry use (without water)
- Control circuit which automatically activates aspirator when model trimmer is switched on
- Safety button as per CE regulation
- Ready to secure to the work surface
- Particularly recommended for hard plasters, investments and resins
- Very reliable, long-lasting disk

## ADVANTAGES

- Low-level noise performance
- Securing the trimmer to the workbench guarantees greater stability
- 1-year guarantee



SQM 25 SN



Orthodontic support

## Technical data

CODE	MODEL	SIZE (CM)	WEIGHT (KG)	DISC SIZE	SPEED (RPM)	VOLTAGE (V / HZ)	TOTAL POWER
C305905	SQM 25 N Wet model trimmer	L37 / D32 / H34	16.5	cm Ø 25,5 / thick. 0.65 / hole Ø 2.55	2800	230V±10% / 50 Hz	600 Watts
C305907	SQM 25 SN Dry model trimmer	L37 / D32 / H34	15	cm Ø 25.4 / thick. 0.65 / hole Ø 2.55	2800	230V±10% / 50 Hz	600 Watts

## Standard components

XR0091100 Abrasive disk for SQM 25 N (water)

XR0090000 Abrasive disk for SQM 25 SN (dry)

## Accessories

XR0090100 Orthodontic support

XR0090036 Worktop surface

XR0090020 Rubber panel for diamond disk cleaning

C305903 SAB 1000 G Extractor for dry version model trimmers

XI0990220 Nylon filter bag (for SAB 1000 G - 1 pc.)



# Minilab

Super compact dental stone workstation  
for the Dental Surgery



## APPLICATIONS

- Designed for dental surgeries who produce their own dental stone models

## CHARACTERISTICS

- Ergonomic and extremely compact
- Enamelled steel structure
- Work surface in postforming laminate for fast, easy cleaning
- Possibility to add the Elite® mix vacuum-sealed mixer
- Compressed air gun and aspirator included
- Optional aspirated workholder air channel

## ADVANTAGES

- Versatile and quick use
- Allows for the creation of plaster models even in the smallest surgeries
- 1-year warranty

While stocks last

### Technical data

CODE	MODEL	SIZE (CM)	WEIGHT (KG)	VOLTAGE (V / HZ)
C307600	Minilab	L115 / D50 / H150	134	230V±10% / 50 Hz

### Standard components

XI0260020	Filter bag for aspirator (2 pcs.)
	Model trimmer with diamond disk
	Aspirator
	Air connection tubes
	Workholder + plug
	Air gun

### Accessories

XR0090000	Diamond disk
C305120	Elite® mix - 230V Mixer for plaster and investments
XR0260010	Filter bag for aspirator (10 pcs.)



# PUL 2 N

Polishing lathe



## APPLICATIONS

- For cleaning and polishing prosthetic restorations

## CHARACTERISTICS

- Equipped with two-speed selector
- Solid aluminium bodywork
- Designed to be secured to the work surface

## ADVANTAGES

- Small and compact
- Designed with high quality materials for a longer operational life
- 1-year warranty

## Technical data

CODE	MODEL	SIZE (CM)	SPEED (RPM)	WEIGHT (KG)	VOLTAGE (V / HZ)	TOTAL POWER
C306301	PuL 2 N Polishing lathe	L47 / D15 / H24	1400 / 2800	7.5	230V±10% / 50 Hz	160 Watts max

## Accessories

XR0130020	Left-hand and right-hand brush holders
XR0130050	Spray guards (1 pc.)



## APPLICATIONS

- Grinding, cutting and polishing of prosthetic restorations

## CHARACTERISTICS

- DC traditional-type motor (with manifold) with high torque value with maximum speed 35,000 rev/min
- Electronic control with microprocessor to optimise motor performance and endurance
- Precision mechanics with high quality materials and components

## ADVANTAGES

- Excellent quality with a minimum investment
- 1-year warranty



\* Article only available for the Italian market

## Technical data

CODE	MODEL	CONTROL PANEL SIZE (CM)	WEIGHT (KG)	HANDPIECE WEIGHT (KG)	ENGINE TORQUE (NM)	VOLTAGE (V / HZ)	TOTAL POWER
C306107	Ario 35	L11.2 / D4.7 / H7.8	1.25	0.275	2.6	230V±10% / 50-60 Hz	100 Watts

## Standard components

XI0110140	Pincer key
-----------	------------





M&T 1 - Item holder plate  
(non-standard accessory)

## APPLICATIONS

- Milling for fixed restorations

## CHARACTERISTICS

- Milling unit with pantograph arm and parallelometer
- Specific for freehand work thanks to its jointed system
- Equipped with air pressure adjuster, air system, lighting system
- Equipped with Ares 27 micromotor control (2000-27,000 rev/min., 122W)
- Precise Led light

## ADVANTAGES

- Easy-to-handle arm for precise milling
- The excellent precision of the M & T system allows improved manual milling operations
- 1-year warranty

## Technical Data

CODE	MODEL	SIZE (CM)	WEIGHT (KG)	HANDPIECE POWER	VOLTAGE (V / HZ)	TOTAL POWER
C307700	M&T 1 milling machines with pantograph arm and parallelometer	L26 / D25 / H42	19.5	122 Watt	230V±10% / 50-60 Hz	180 Watt

## Standard components

XI0270020	Air kit
XR0270050	Led adapter
XI0110140	Pincer wrench

## Accessories

XR0270030	Item holder plate
XR0270010	Magnetic item holder plate
XR0270020	Pantograph micrometric lock



# CM 1

Digital centrifuge with external heat source



\* CM1D with optional base support (XR0000020)

## APPLICATIONS

- With the aid of a gas/air torch, melt and centrifuges metal alloys inside investment cylinders

## CHARACTERISTICS

- CM 1 D: benchtop model \*
- Digital electronic control with microprocessor for/with:
  - programming of rotation time between 10 and 60 seconds with digital display
  - digital adjustment of the arm opening starting torque
  - FREE button, to unblock the motor brake
  - START button, pressing this enables start which is triggered by the closing of the hatch
- Sensor noting the correct positioning of the rotation system for safety in the working environment
- Electromechanical hatch-blocking device, avoids the opening of the hatch while the system is rotating
- Quick adjustment of the investment size
- Pre-set balance adjustment
- Silent, solid structure and perfectly balanced

## ADVANTAGES

- The motor brake, hatch block and correct positioning sensor of the rotation system ensure maximum safety levels
- Easy to use thanks to the quick adjustment of the cylinder height and of the balance
- The double-jointed arm optimises the pouring of melted metal into the coating cylinder
- 1-year warranty

### Technical data

CODE	MODEL	SIZE (CM)	WEIGHT (KG)	VOLTAGE (V / HZ)	TOTAL POWER
C305001	CM 1 D benchtop model	L60 / D55 / H33	41	230V±10% / 50-60 Hz	2000 Watts

### Standard components

	Crucible (2 pcs.)	XH9900020	Allen wrench 6 mm
XI0000060	Cylinder 1X	XH9900030	Allen wrench 5 mm
XI0000062	Cylinder 3X	XI0990010	Adjustable base feet
XI0000064	Cylinder 6X	XR0000020	Base (optional)
XI0000066	Cylinder 9X		
XI0990050	Multiple rubber base		



# Accessories



Cylinder 1X - 3X- 6X - 9X



Multiple rubber base



5 crucibles

**Accessories**

XR0000020	Base
XI0000070	Crucible (1 pc.)
XR0000010	Crucible (5 pcs.)



# Euclide

With laser pointing



## APPLICATIONS

- For drilling dental models with laser pointing for pin application

## CHARACTERISTICS

- Drilling depth can be regulated
- Equipped with laser guiding
- Drill heads, core pins, positioning pins and sheaths on both models
- The Euclide M.P. collet chuck can mount drill heads between Ø of 2.7 and 3.2 mm stem

## ADVANTAGES

- Laser aiming guarantees maximum drilling precision
- Plate adjustment system guarantees correct drilling depth
- Pull-out plaster tray easily removed and cleaned
- 1-year warranty

### Technical data

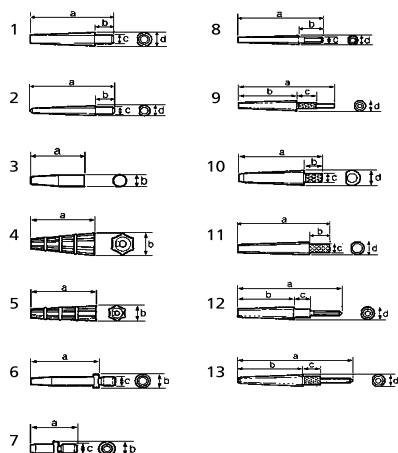
CODE	MODEL	SIZE (CM)	WEIGHT (KG)	SPEED (RPM)	VOLTAGE (V / HZ)	TOTAL POWER
C307003	Euclide M.P. - Pincer chuck	L20 / D18 / H63.5	7.5	2800	230V±10% / 50-60 Hz	50 Watts

### Standard components

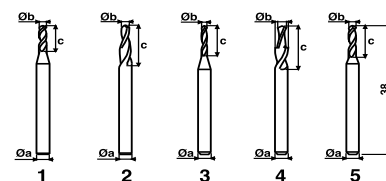
XR0200040	Cylindrical drill heads, SIZE 2 mm STEM 3 mm	XR0202070	Sheaths (100 pcs.)
XR0202010	Core pins (100 pcs.)	XR0202050	Positioning pins (100 pcs.)



# Accessories



Pos	Cod. / ID Код		Dimensione • Overall dimensions • Dimension • Medidas • Abmessungen • Размер mm / mm			
	100 pz. pcs./шт.	1000 pz. pcs./шт.	a	b	c	d
1	XR0202010	XR0202020	18,5	4,5	2	3,3
2	XR0202030	XR0202040	18,5	4,5	1,5	2
3	XR0202050	XR0202060	10	2	-	-
4	XR0202070	XR0202080	14	4,8	-	-
5	XR0202090	XR0202100	14	3	-	-
6	XR0202110	XR0202120	20	3	2	-
7	XR0202130	XR0202140	10	3	2	-
8	XR0203010	XR0203020	18,5	4,5	1,5	2
9	XR0203030	XR0203040	25	15	5	2
10	XR0203050	XR0203060	18,5	4,5	2	3,3
11	XR0203070	XR0203080	21,5	5	2	3,3
12	XR0203090	XR0203100	26	14	4,5	3,3
13	XR0203110	XR0203120	28,5	16,5	4,5	3,3



Pos	Cod. / ID Код	Dimensione • Overall dimensions • Dimension • Medidas • Abmessungen • Размер mm/mm		
		Ø a mm/mm	Ø b mm/mm	c mm/mm
1	XR0200040	3	2	8,5
2	XR0200050	3	2	14,5
3	XR0200060	3	1,5	9
4	XR0200070	3	2-3	12,5
5	XR0200080	3	2	10

## Accessories

XR0200040	Cylindrical drill head SIZE 2 mm STEM 3 mm
XR0200060	Cylindrical drill head SIZE 1.5 mm STEM 3 mm
XR0200070	Cylindrical drill head SIZE 2-3 mm STEM 3 mm
XR0200080	Cylindrical drill head SIZE 2-3 mm STEM 3 mm S. 10 mm
XR0201040	Plexiglas bases (10 pcs.)
XR0200050	Cone drill head SIZE 2.10x3 mm STEM 3 mm
XR0201060	Cone pin (100 pcs.)
XR0201070	Cone pin (1000 pcs.)
XR0202010	Smooth top pin ø 2 mm (100 pcs.)
XR0202020	Smooth top pin ø 2 mm (1000 pcs.)
XR0202030	Smooth top pin ø 1.5 mm (100 pcs.)
XR0202040	Smooth top pin ø 1.5 mm (1000 pcs.)
XR0202050	Positioning pin (100 pcs.)
XR0202060	Positioning pin (1000 pcs.)
XR0202070	Plastic case for XR0202010 (100 pcs.)
XR0202080	Plastic case for XR0202020 (1000 pcs.)
XR0202090	Plastic case for XR0202030 (100 pcs.)
XR0202100	Plastic case for XR0202040 (1000 pcs.)
XR0202120	Special pin without case, long double head shaft ø top 2 and 3 mm (1000 pcs.)
XR0202130	Special pin without case, short double head shaft ø top 2 and 3 mm (100 pcs.)
XR0202140	Special pin without case, short double head shaft ø top 2 and 3 mm (1000 pcs.)
XR0203010	Knurled pin (100 pcs.)
XR0203020	Knurled pin (1000 pcs.)
XR0203030	Small knurled pin with drill (100 pcs.)
XR0203040	Small knurled pin with drill (1000 pcs.)
XR0203050	Medium knurled pin (100 pcs.)
XR0203060	Small knurled pin (1000 pcs.)
XR0203070	Large knurled pin (100 pcs.)
XR0203080	Large knurled pin (1000 pcs.)
XR0203090	Medium smooth top pin with drill (100 pcs.)
XR0203100	Medium smooth top pin with drill (1000 pcs.)
XR0203110	Large knurled pin with drill (100 pcs.) - (While stocks last)
XR0203120	Large knurled pin with drill (1000 pcs.)



Vibrator for plaster and investment

#### APPLICATIONS

- Vibrators for pouring plaster into impressions and for investment

#### CHARACTERISTICS

- Adjustment handpiece for electronic vibration regulation
- A 12: 23x14 cm worktop surface

#### ADVANTAGES

- Rubber surface is easily removable for cleaning
- Support stands keep vibrations to the vibrating worktop
- Dependability over time
- 1-year warranty



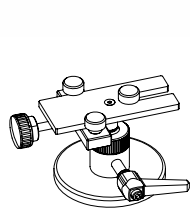
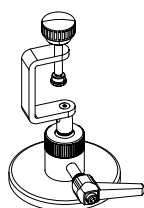
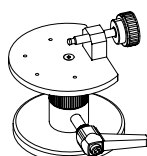
#### Technical Data

CODE	MODEL	SIZE (CM)	WEIGHT (KG)	WORKING SURFACE	VOLTAGE (V / HZ)	TOTAL POWER
C306201	A 12	L24 / D17 / H10	5	L23 / D14	230V±10% / 50-60 Hz	350 Watts



# Talete

Die separating unit


 XR0190011  
 Standard support  
 supplied  
 (Standard)

 XR0190021  
 Special support 1  
 for Model-tray\*  
 and Tricodent\* on request  
 (Optional)

 XR0190031  
 Special support 2  
 for Accutrac\*  
 on request  
 (Optional)

\*Model-tray, Tricodent, Accutrac and Optibase are not Zhermack brands.

## APPLICATIONS

- Saw for cutting out dies in dental models

## CHARACTERISTICS

- Double motor drive command
- Front and side protection panel
- Safety micro positioned on the front protection
- Powerful magnetic placement surface
- Incorporated dust extractor and lighting systems
- TALETE model: Standard support supplied
- TALETE SPECIALE 1 model: Special 1-type support and diamond tool Ø 75 mm, thickness 0.3 mm. Suitable for MODELTRAY or TRICODENT systems
- TALETE SPECIALE 2 model: Special 2-type support and diamond tool Ø 75 mm, thickness 0.3 mm. Suitable for ACCUTRAC system mill
- Workholder supports 1 - 2 are supplied on request

## ADVANTAGES

- Double action command (rubber-protected) and micro suspension motor switch positioned on the front protection screen
- Protected buttons prevent dust from damaging internal machine components
- High power, high rotation speed and solid structure for maximum cutting precision
- Incorporated dust extraction system guarantees high-powered aspirator
- 1-year warranty

## Technical data

CODE	MODEL	SIZE (CM)	WEIGHT (KG)	C. WEIGHT YIELD	SPEED (RPM)	VOLTAGE (V / HZ)	TOTAL POWER
C306900	Talete	L37 / D30 / H34	18	209 m <sup>3</sup> /ora	600	230V±10% / 50-60 Hz	200 Watt

## Standard components

XR0190050	Normal circular diamond disk - normal Talete - n° 1
XR0190011	Normal work surface support - normal Talete - n° 1
XB0190010	Screwdriver

## Accessories

XR0190050	Normal diamond mill (Ø 63 mm - Cut 0.3 mm) (Talete)
XR0190060	Extra fine diamond mill (Ø 63 mm - Cut 0.2 mm)
XR0190070	Large diamond mill (Ø 75 mm - Cut 0.3 mm) (Speciale 1 Talete - Speciale 2 Talete)
XR0190080	Large extra fine diamond mill (Ø 75 mm - Cut 0.2 mm)
XR0190040	Plastic part for work surface support - Speciale 2 Talete

XB0191090	Dust collection filter
XR0190021	Workholder supports 1
XR0190031	Workholder supports 2



## *Zhermack, a major player in the global market, at the service of its local clients*

### **Experience**

30 years of experience in designing advanced solutions for the dental industry have enabled the creation of highly reliable systems for dental laboratories and dental surgeries.



### **Reliability**

Performance durability and reliability over time are the strengths of each Zhermack product. From the meticulous choice of components to testing and functional inspections, each phase is followed with special care before marketing products.

### **Zhermack By Process:**

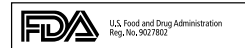
Our quality management system is certified since more than twenty years according to ISO 9001 and 13485 regulations. Our environmental management system is certified since 2001 according to ISO 14001 regulation.

### **Zhermack By Product:**

Our products fulfill the applicable European Regulations requirements (medical devices and equipments) and the international rules of the main Extra CEE countries as Russia, Brazil, China, Japan, Canada and USA.



JPAL Accreditation  
Certificate of  
foreign medical  
device manufacturer

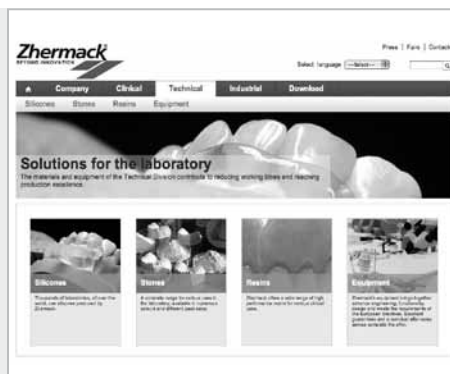


### **Post-sales service**

Availability, transparency and efficiency in customer care are the main principles of Zhermack's after-sales service. Our highly qualified in-house service personnel also deal with reseller and authorised service centre training, thus ensuring dissemination of technical and functional knowledge about each product.

### **On-line assistance**

All technical Zhermack documentation is available at [www.zhermack.com](http://www.zhermack.com). Each product data sheet allows quick reference of key information and downloads of in-depth information material such as brochures, manuals, quick start guides and much more.





[illegible]



[illegible]





#### BRANCHES

**GERMANY**  
**Zhermack GmbH Deutschland**  
Öhlmühle 10 - D-49448 Marl  
Tel. +49 - 0 54 43 / 20 33 - 0  
Fax +49 - 0 54 43 / 20 33 - 11  
info@zhermack.de  
www.zhermack.com

**POLAND**  
**Zhermapol Sp. z o.o.**  
ul. Augustówka 14  
02 - 981 Warszawa - Polska  
Tel. +48 - 22 858 82 72  
+48 - 22 858 73 41  
Fax +48 - 22 642 07 14  
biuro@zhermapol.pl  
www.zhermapol.pl

**USA**  
**Zhermack Inc.**  
P.O. Box 4195, River Edge  
New Jersey 07661-4195  
Tel. +1 (877) 819 6206  
+1 (732) 389 8540  
Fax +1 (732) 389 8543  
info@zhermackusa.com  
www.zhermackusa.com

#### COUNTRY CONTACTS

**UK and Ireland**  
Tel. +44 - (0) 7870 690811  
uk@zhermack.com

**Spain**  
Tel. 900 99 39 52  
info.spain@zhermack.com

**France**  
Tel. 0800 - 915083  
info.france@zhermack.com

**Russia**  
Tel. +7 916 930 1191  
info.russia@zhermack.com

**Mexico and Central America**  
Tel. +52 - 1 - 55 - 91980497  
info.mexico@zhermack.com

**South America**  
Tel. +57 - 310 - 2601777  
info.colombia@zhermack.com

#### Zhermack SpA

Via Bovazecchino, 100 - 45021 Badia Polesine (RO) ITALY  
Tel. +39 - 0425 597611 - Fax +39 - 0425 53596  
info@zhermack.com - www.zhermack.com